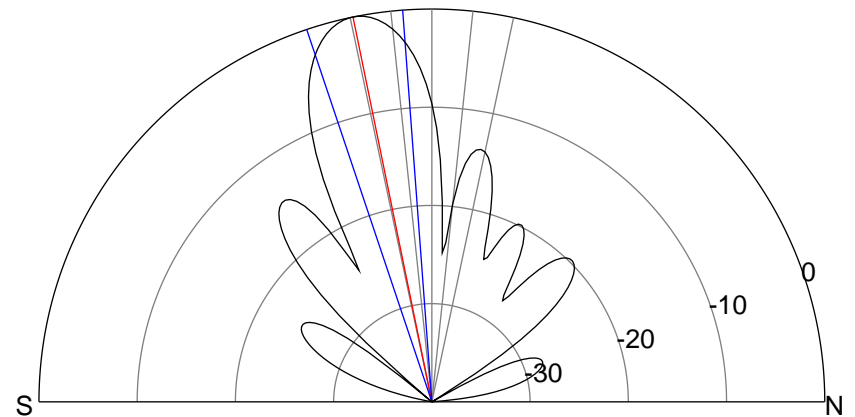
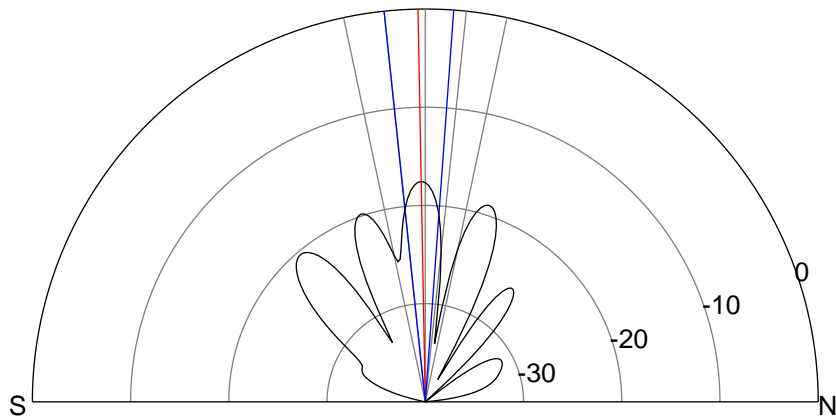
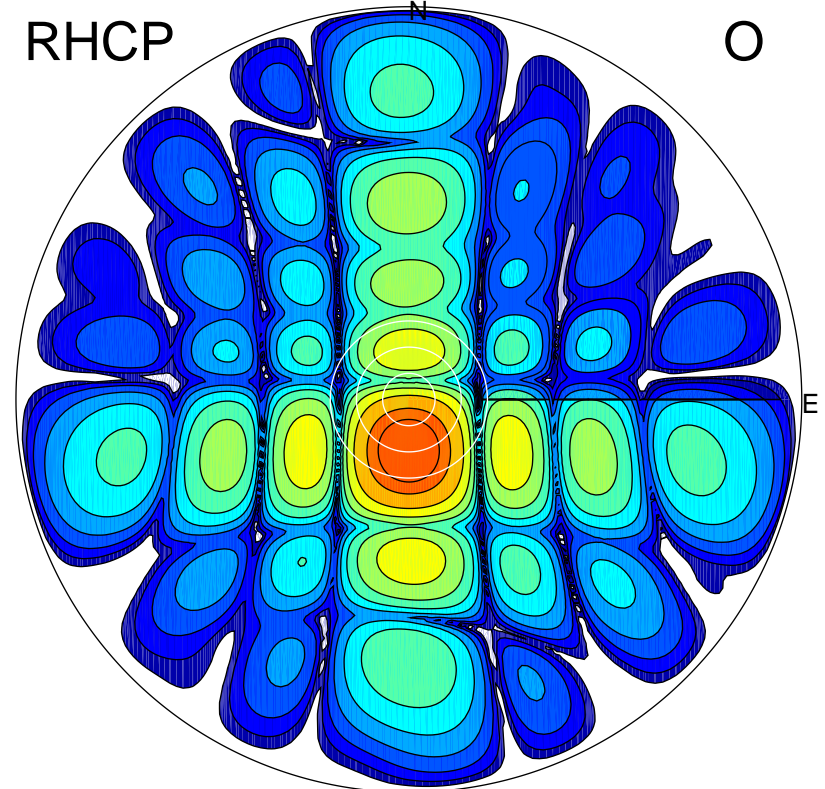
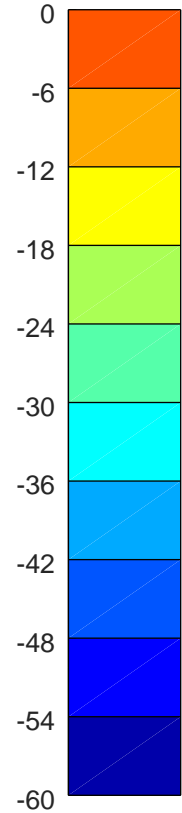
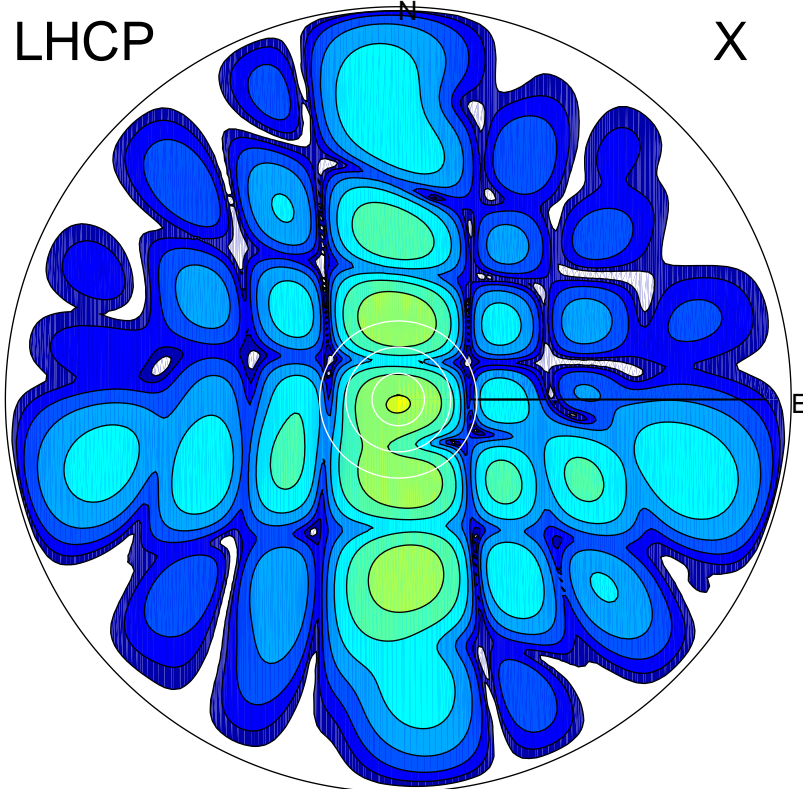


2017-10-17 12:39:25 A2 4.04000000 MHz 747.0 kW



ERP 2.2 MW

Peak gain 4.6 dBi at Az 186 Zen 1
RHCP gain 14.5 dBi
N-S peak 4.6 dBi at Zen -1.1
N-S -3 dB beamwidth 10.2 deg.

ERP 123.4 MW

Peak gain 22.2 dBi at Az 179 Zen 12
LHCP gain -2.7 dBi
N-S peak 22.2 dBi at Zen -11.6
N-S -3 dB beamwidth 14.3 deg.