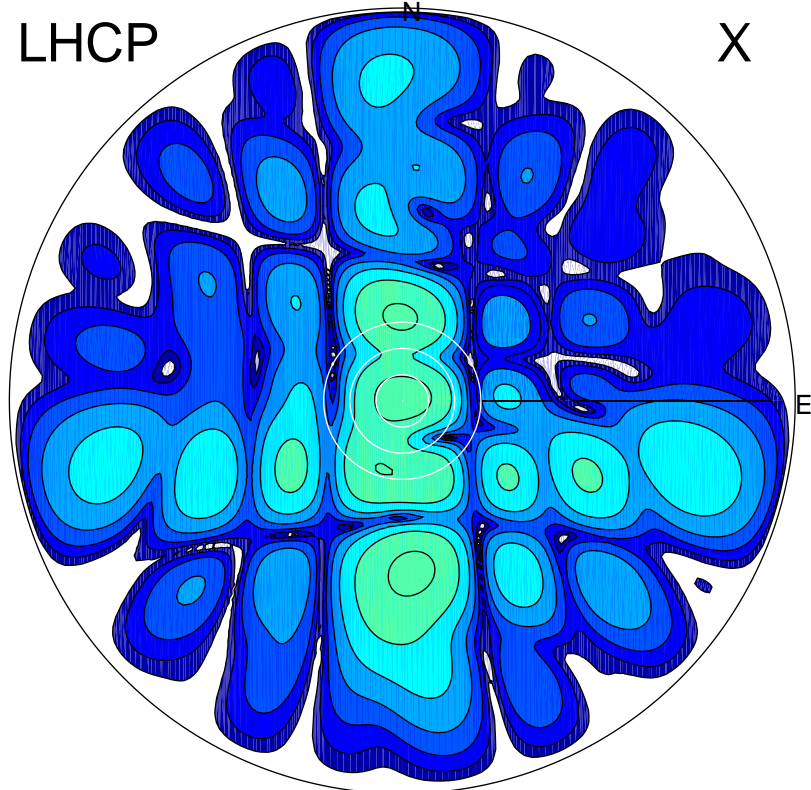


2017-10-17 11:46:30 A2 4.04000000 MHz 756.0 kW

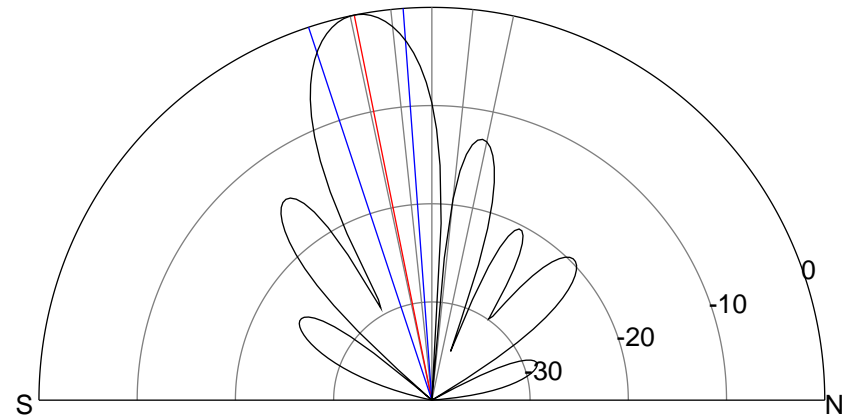
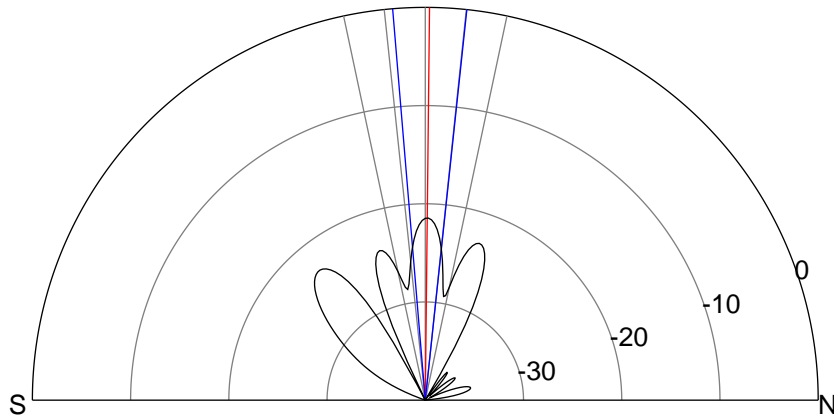
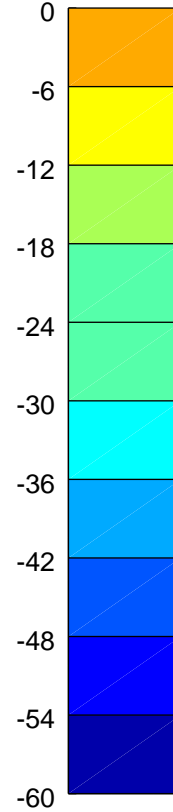
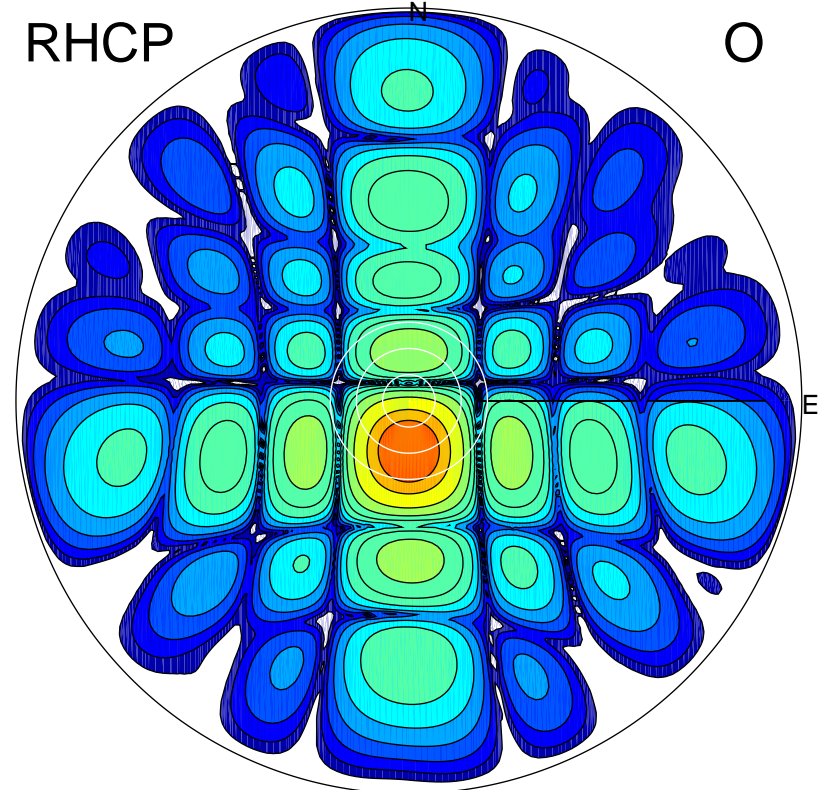
LHCP

X



RHCP

O



### ERP 0.9 MW

Peak gain 0.9 dBi at Az 24 Zen 1  
RHCP gain 10.2 dBi  
N-S peak 0.9 dBi at Zen 0.6  
N-S -3 dB beamwidth 10.8 deg.

### ERP 129.3 MW

Peak gain 22.3 dBi at Az 179 Zen 11  
LHCP gain -5.4 dBi  
N-S peak 22.3 dBi at Zen -11.4  
N-S -3 dB beamwidth 14.1 deg.