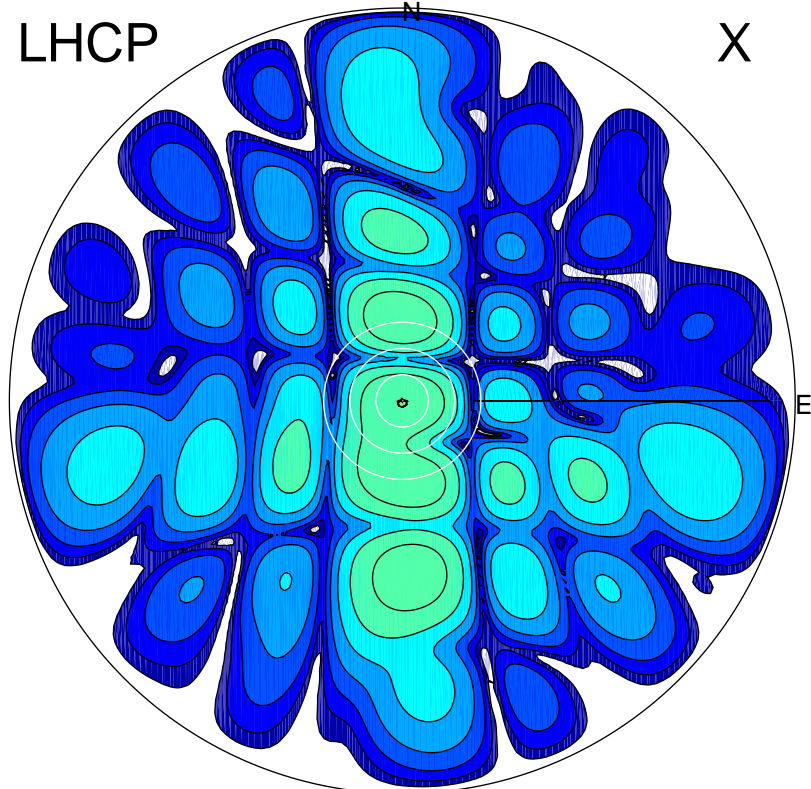


2017-10-16 12:35:05 A2 4.04000000 MHz 745.0 kW

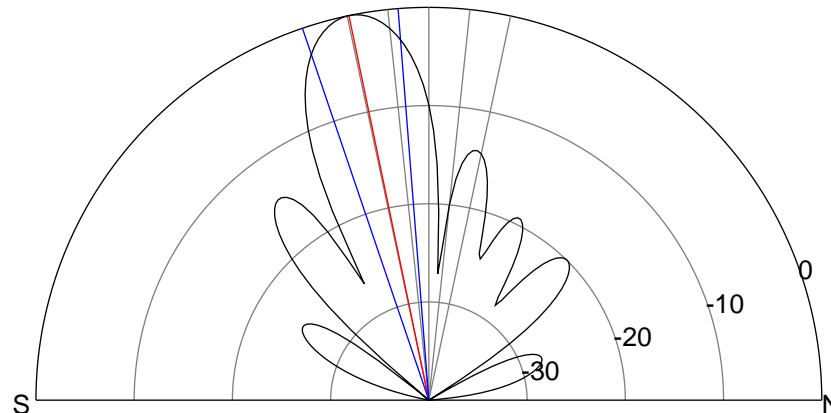
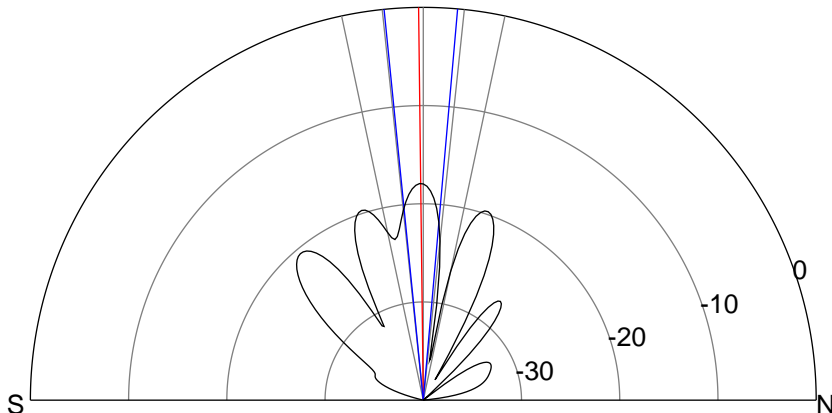
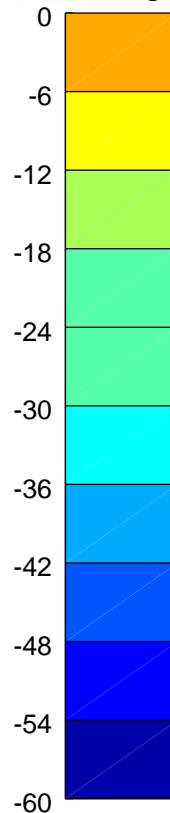
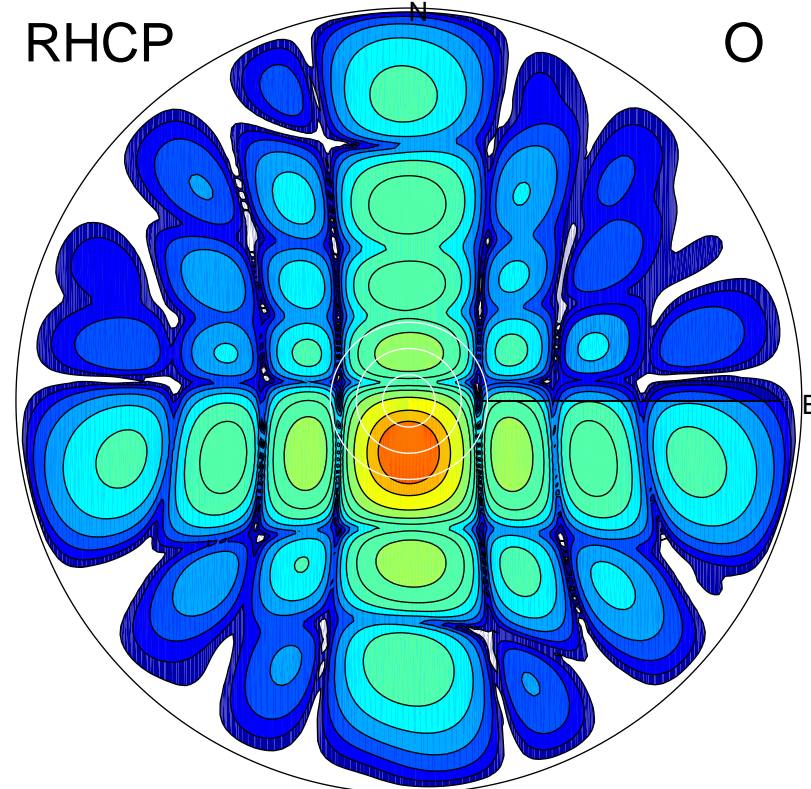
LHCP

X



RHCP

O



### ERP 2.0 MW

Peak gain 4.3 dBi at Az 183 Zen 1  
RHCP gain 14.3 dBi  
N-S peak 4.3 dBi at Zen -0.7  
N-S -3 dB beamwidth 10.7 deg.

### ERP 124.0 MW

Peak gain 22.2 dBi at Az 180 Zen 12  
LHCP gain -0.3 dBi  
N-S peak 22.2 dBi at Zen -11.7  
N-S -3 dB beamwidth 14.3 deg.