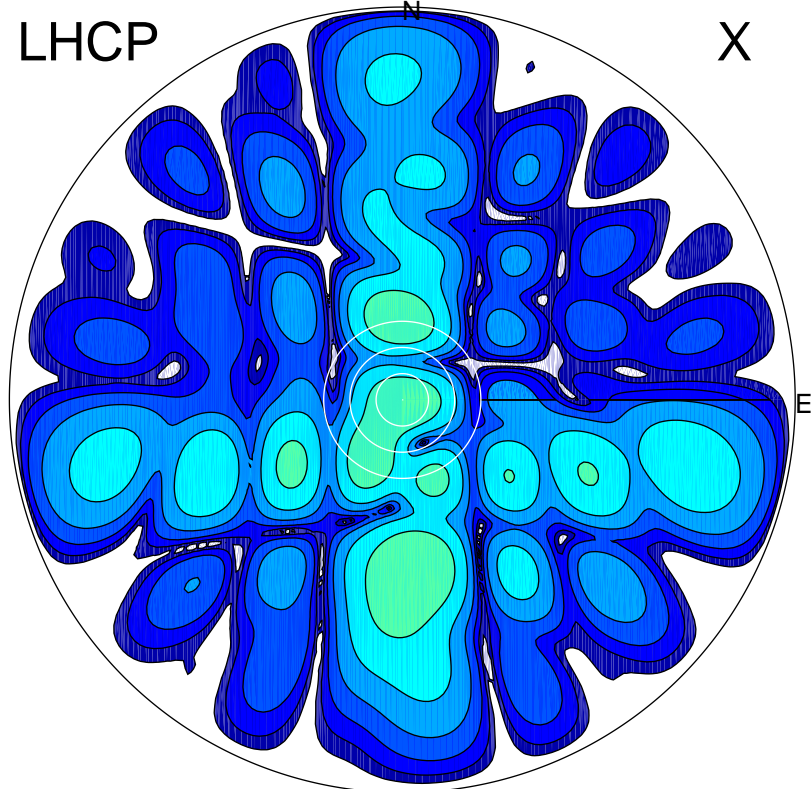


2017-10-16 10:01:00 A2 4.04000000 MHz 809.0 kW

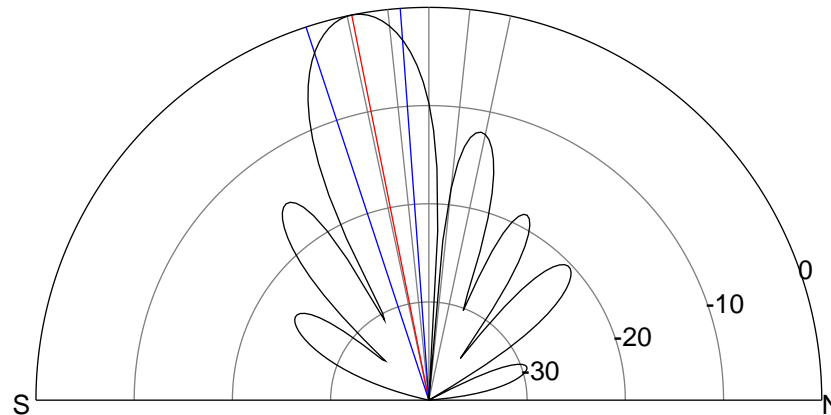
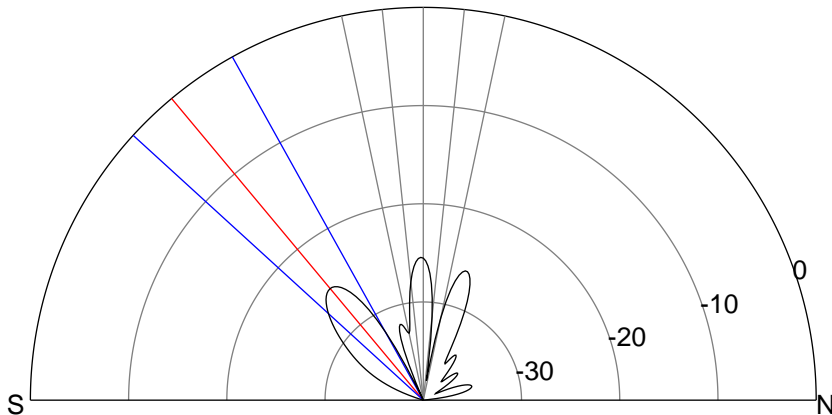
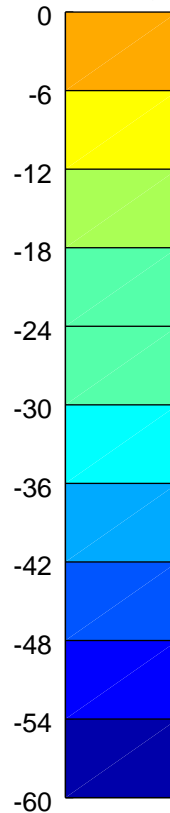
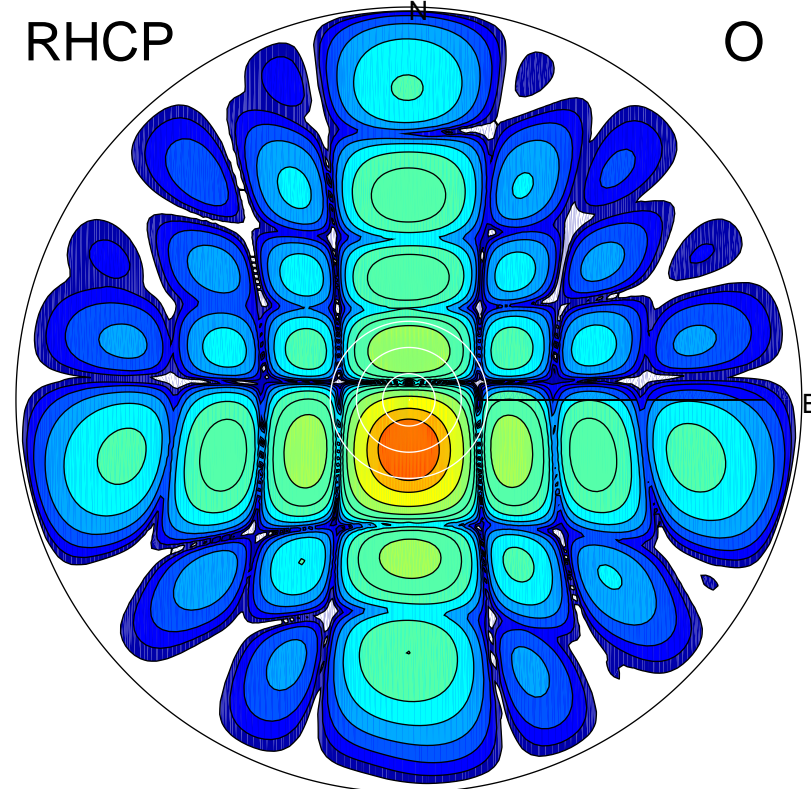
LHCP

X



RHCP

O



### ERP 0.5 MW

Peak gain -2.4 dBi at Az 175 Zen 39  
RHCP gain 5.7 dBi  
N-S peak -2.8 dBi at Zen -39.8  
N-S -3 dB beamwidth 18.5 deg.

### ERP 139.8 MW

Peak gain 22.4 dBi at Az 179 Zen 11  
LHCP gain -10.8 dBi  
N-S peak 22.4 dBi at Zen -11.3  
N-S -3 dB beamwidth 14.0 deg.