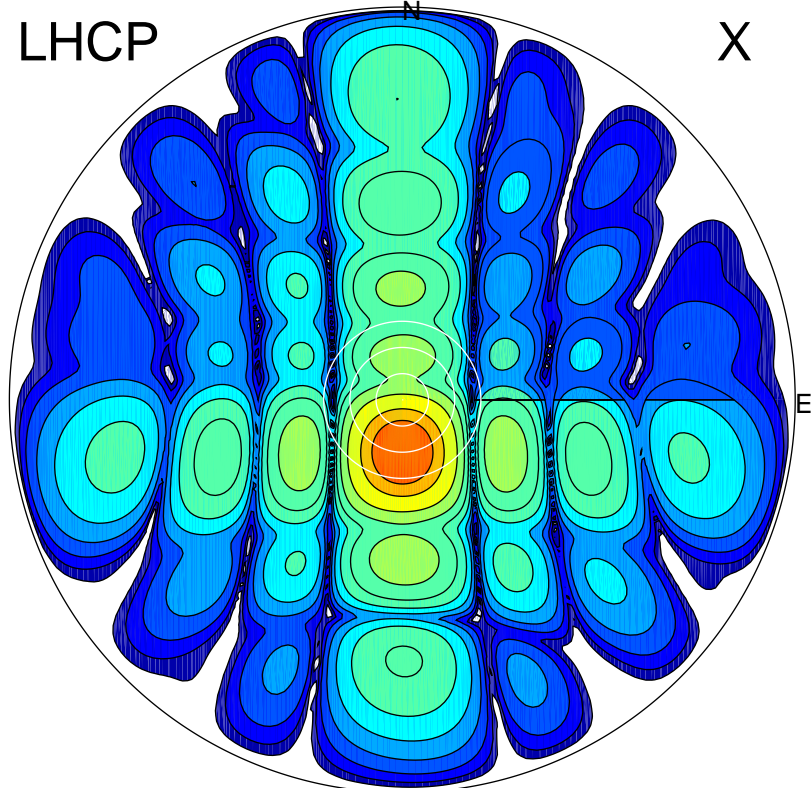


2017-08-20 07:45:01 A2 4.04000000 MHz 759.0 kW

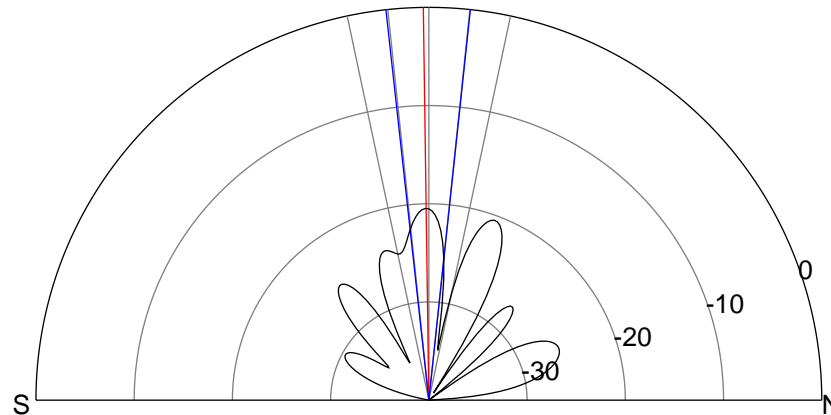
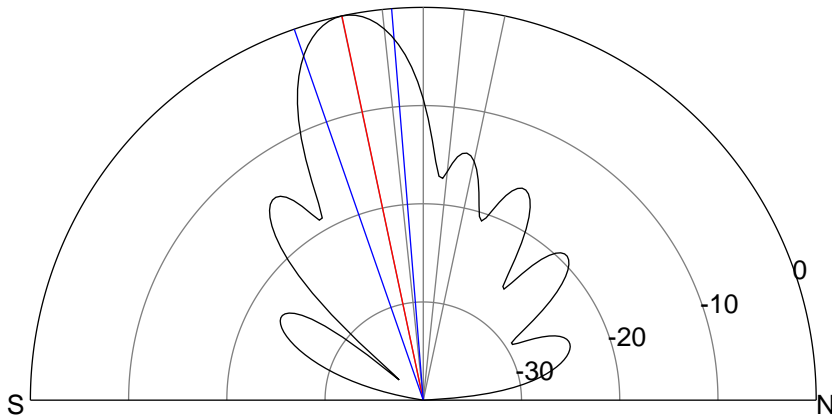
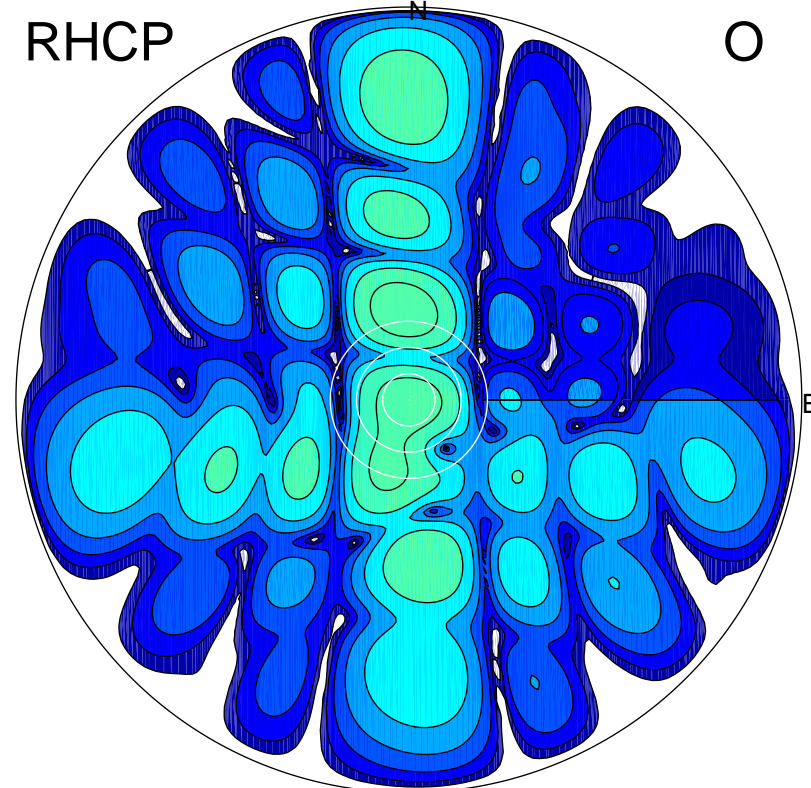
LHCP

X



RHCP

O



ERP 122.9 MW

Peak gain 22.1 dBi at Az 179 Zen 12
RHCP gain -2.9 dBi
N-S peak 22.1 dBi at Zen -12.0
N-S -3 dB beamwidth 14.5 deg.

ERP 1.1 MW

Peak gain 1.7 dBi at Az 357 Zen 20
LHCP gain 2.6 dBi
N-S peak 1.6 dBi at Zen -0.8
N-S -3 dB beamwidth 12.3 deg.