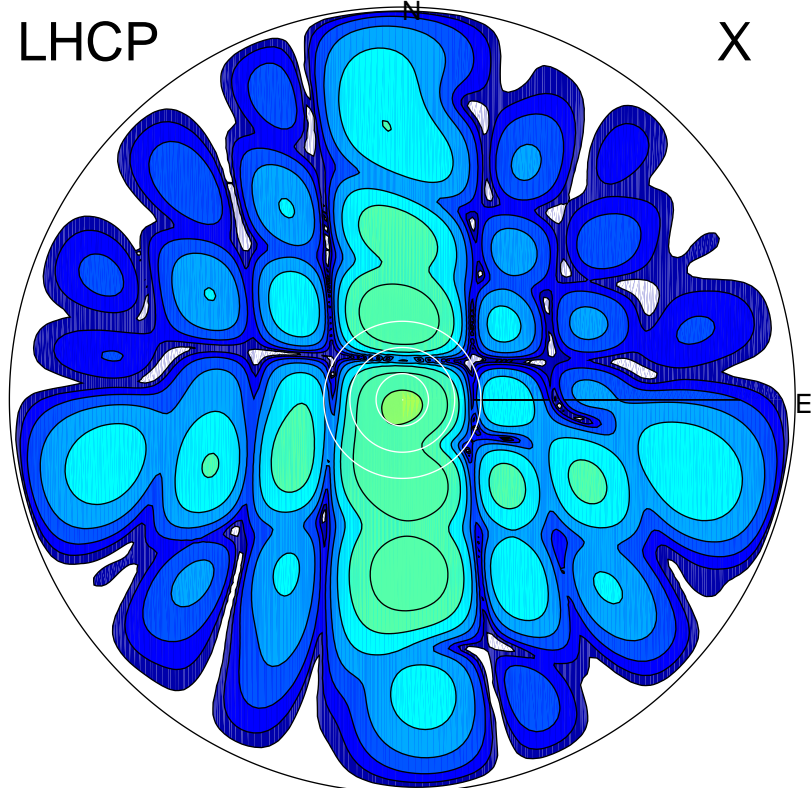


2017-08-20 07:45:00 A2 4.04000000 MHz 788.0 kW

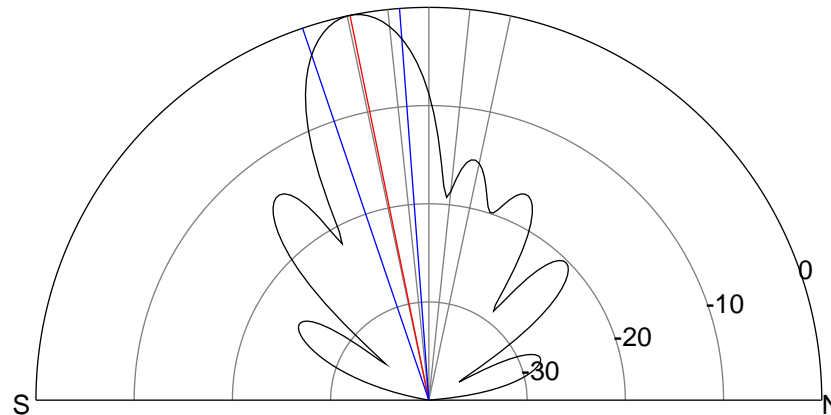
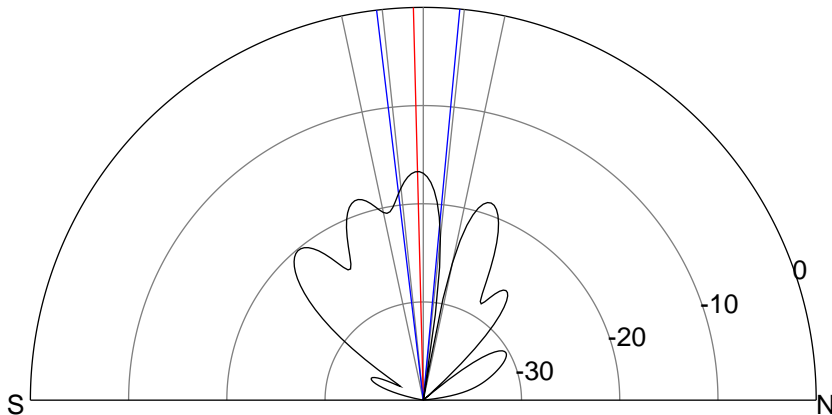
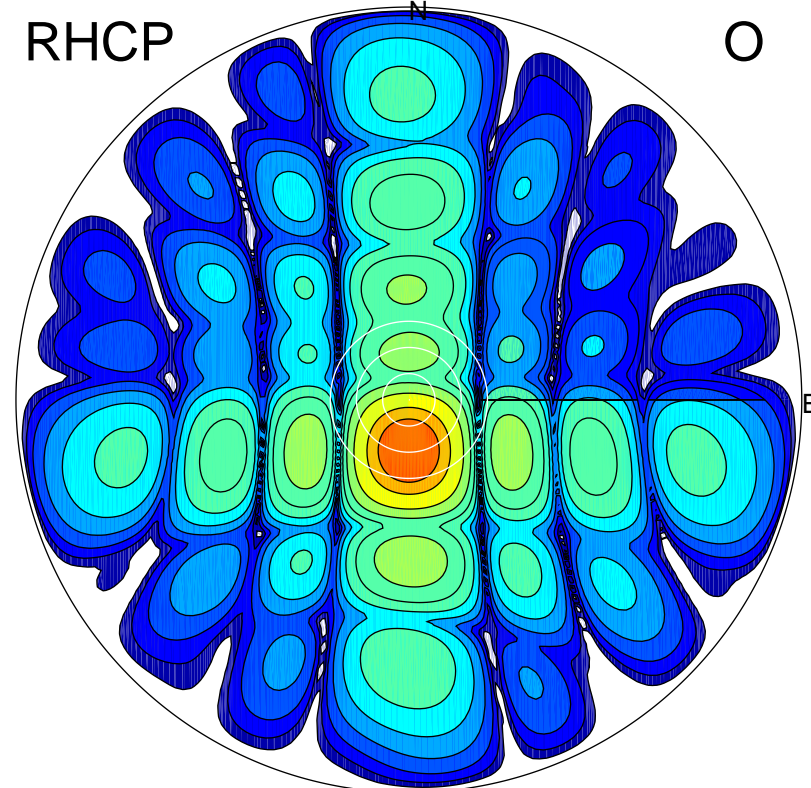
LHCP

X



RHCP

O



ERP 2.7 MW

Peak gain 5.3 dBi at Az 175 Zen 1
RHCP gain 15.0 dBi
N-S peak 5.3 dBi at Zen -1.4
N-S -3 dB beamwidth 12.2 deg.

ERP 126.3 MW

Peak gain 22.0 dBi at Az 180 Zen 12
LHCP gain 1.6 dBi
N-S peak 22.1 dBi at Zen -11.6
N-S -3 dB beamwidth 14.5 deg.