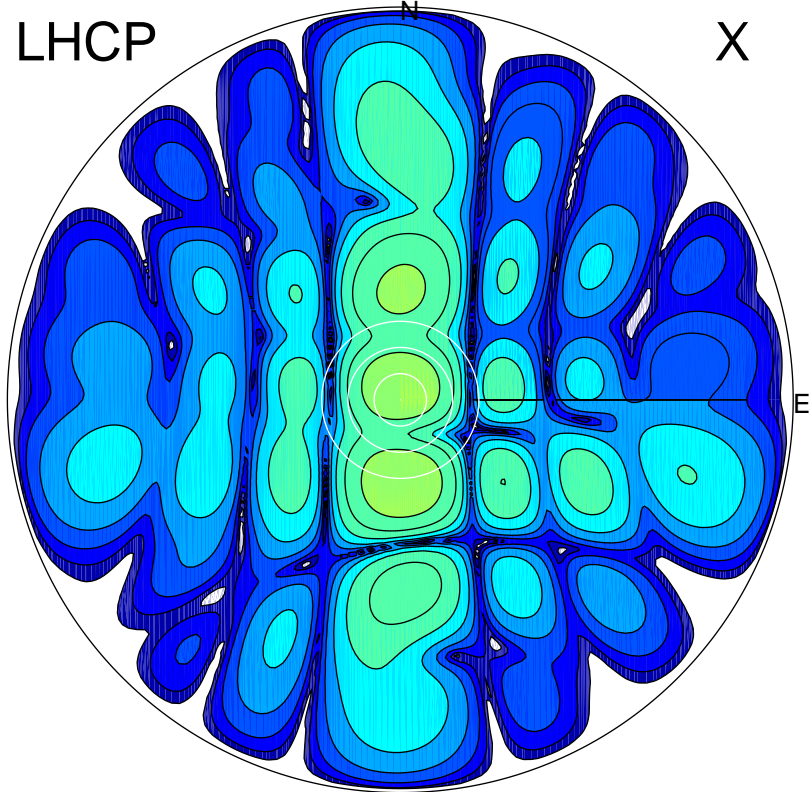


2017-08-20 07:41:02 A2 4.04000000 MHz 718.0 kW

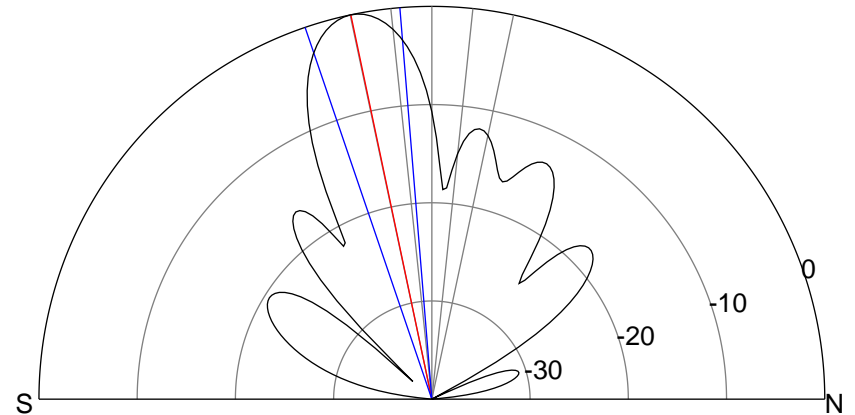
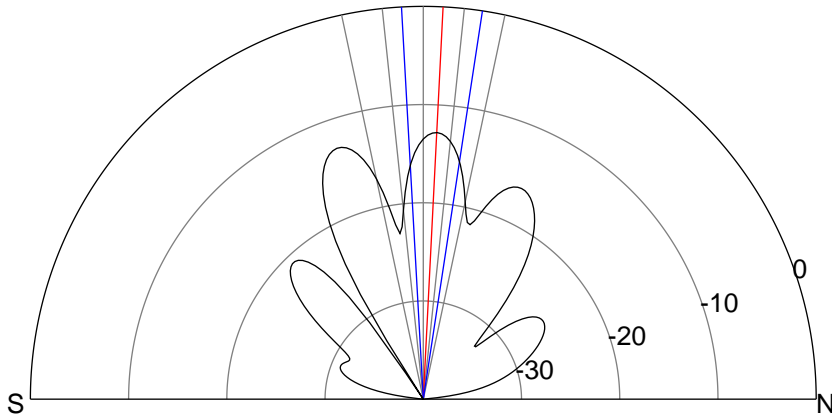
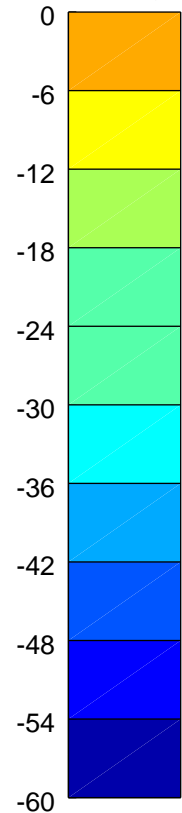
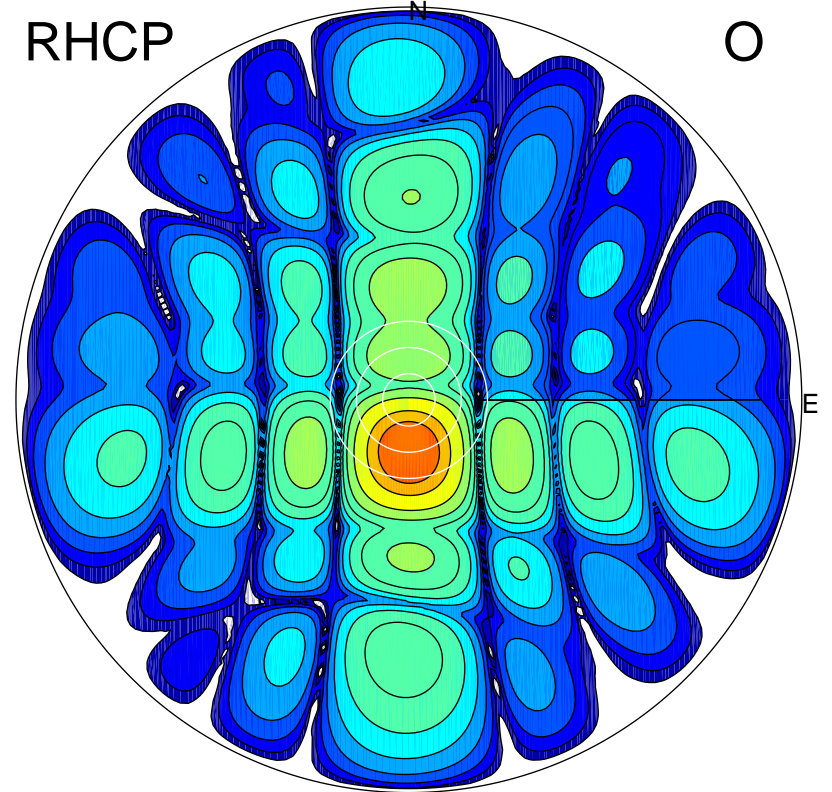
LHCP

X



RHCP

O



### ERP 5.6 MW

Peak gain 8.9 dBi at Az 0 Zen 3  
RHCP gain 3.1 dBi  
N-S peak 8.9 dBi at Zen 2.9  
N-S -3 dB beamwidth 11.8 deg.

### ERP 107.0 MW

Peak gain 21.7 dBi at Az 180 Zen 12  
LHCP gain 4.7 dBi  
N-S peak 21.7 dBi at Zen -11.9  
N-S -3 dB beamwidth 14.2 deg.