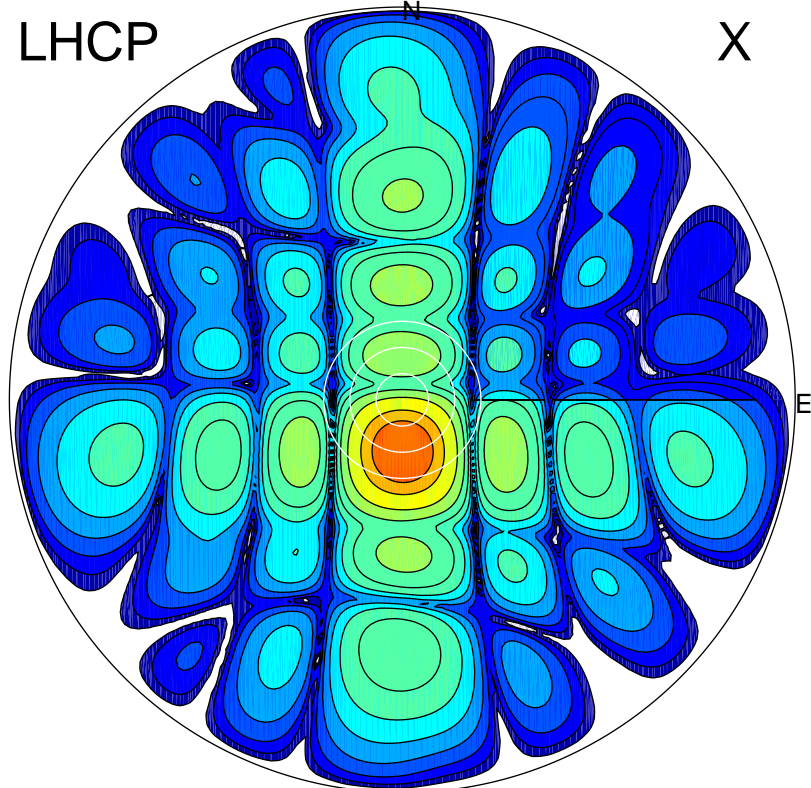


2017-08-20 07:41:01 A2 4.04000000 MHz 757.0 kW

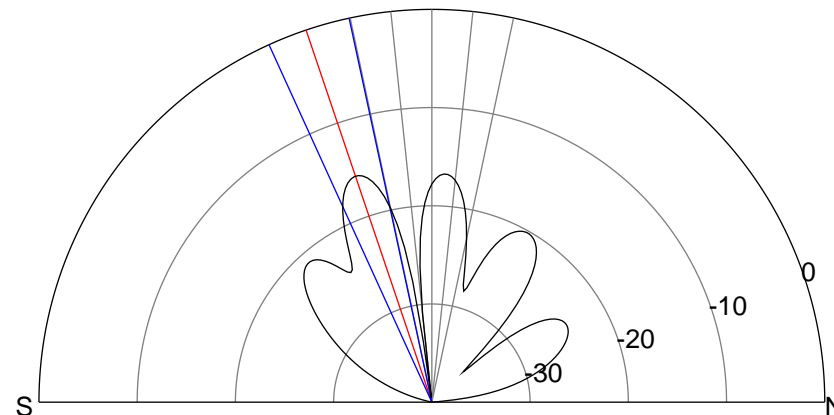
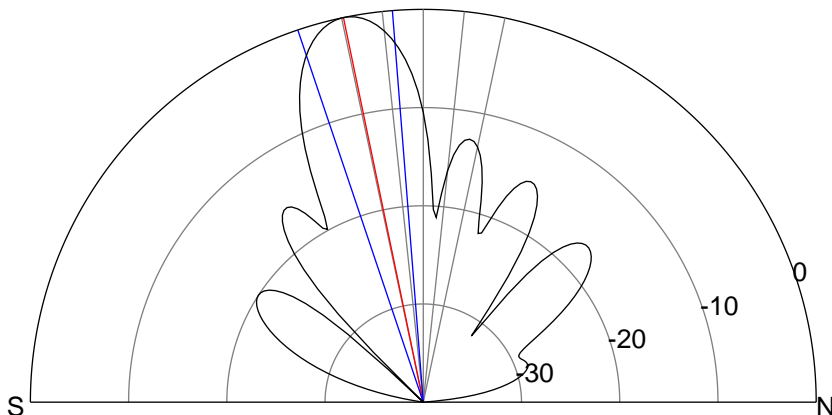
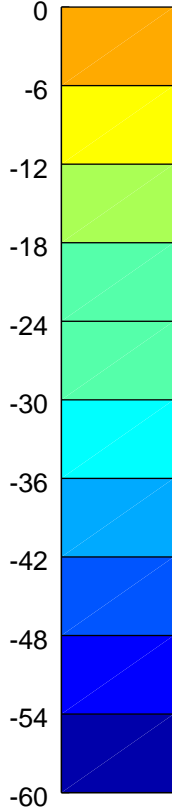
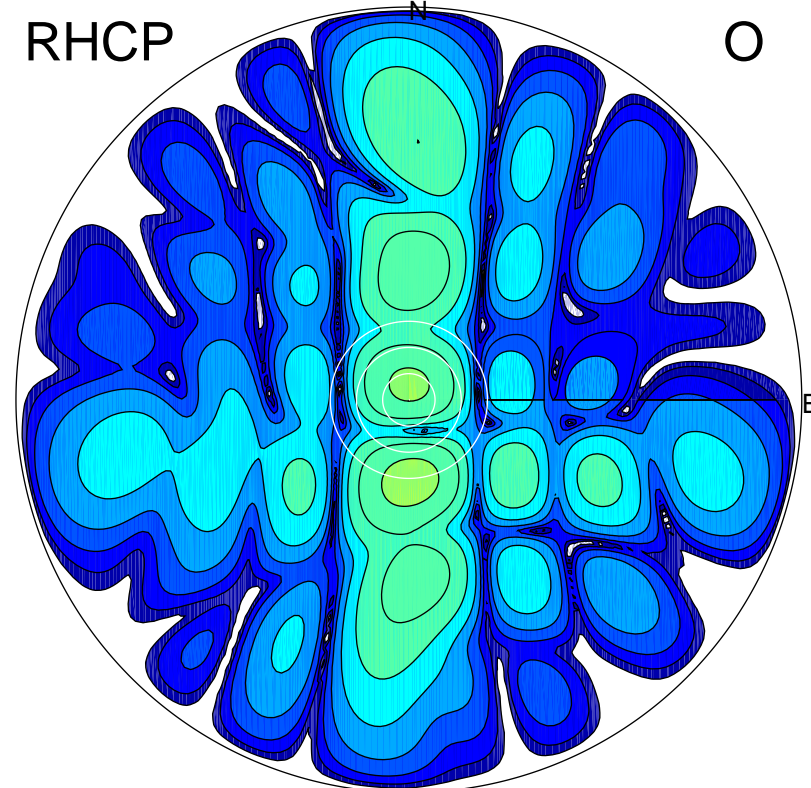
LHCP

X



RHCP

O



ERP 120.6 MW

Peak gain 22.0 dBi at Az 181 Zen 12
RHCP gain 2.2 dBi
N-S peak 22.0 dBi at Zen -11.7
N-S -3 dB beamwidth 14.1 deg.

ERP 3.2 MW

Peak gain 6.3 dBi at Az 178 Zen 19
LHCP gain 19.0 dBi
N-S peak 6.3 dBi at Zen -18.7
N-S -3 dB beamwidth 12.3 deg.