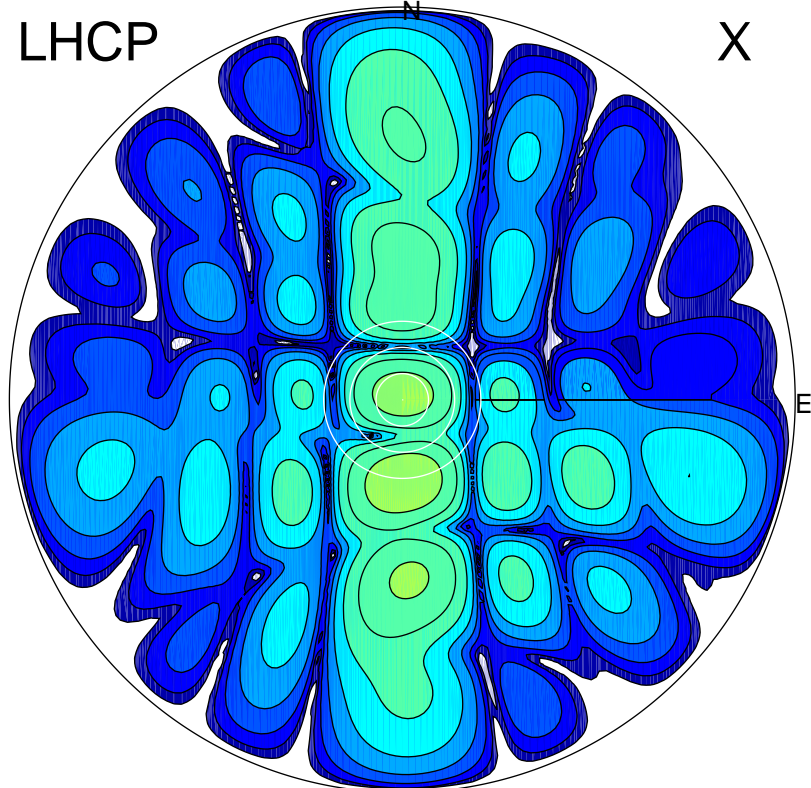


2017-08-18 13:17:03 A2 4.04000000 MHz 692.0 kW

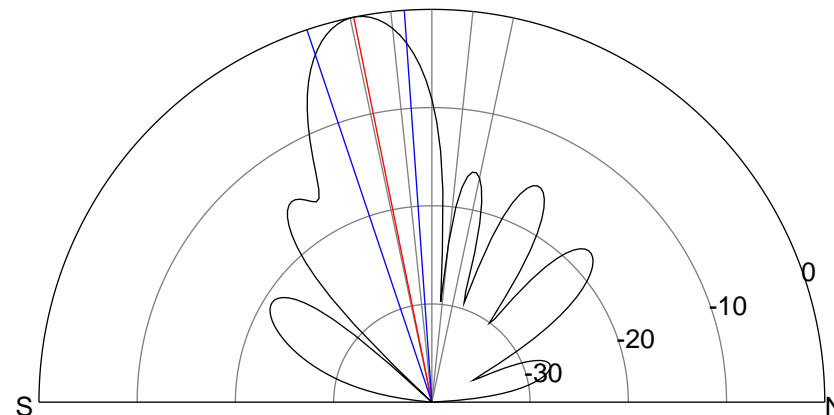
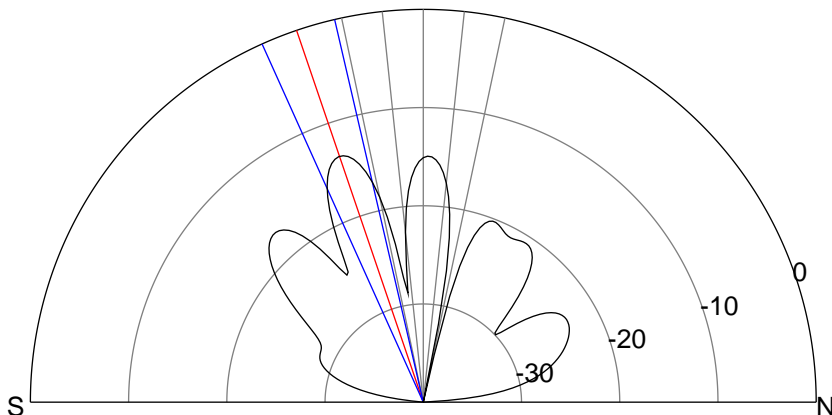
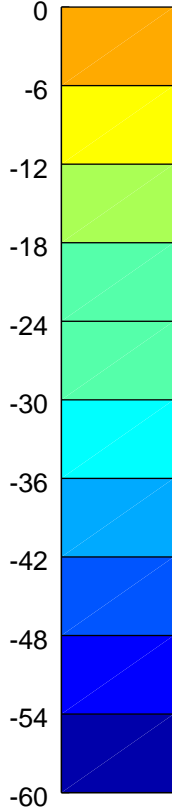
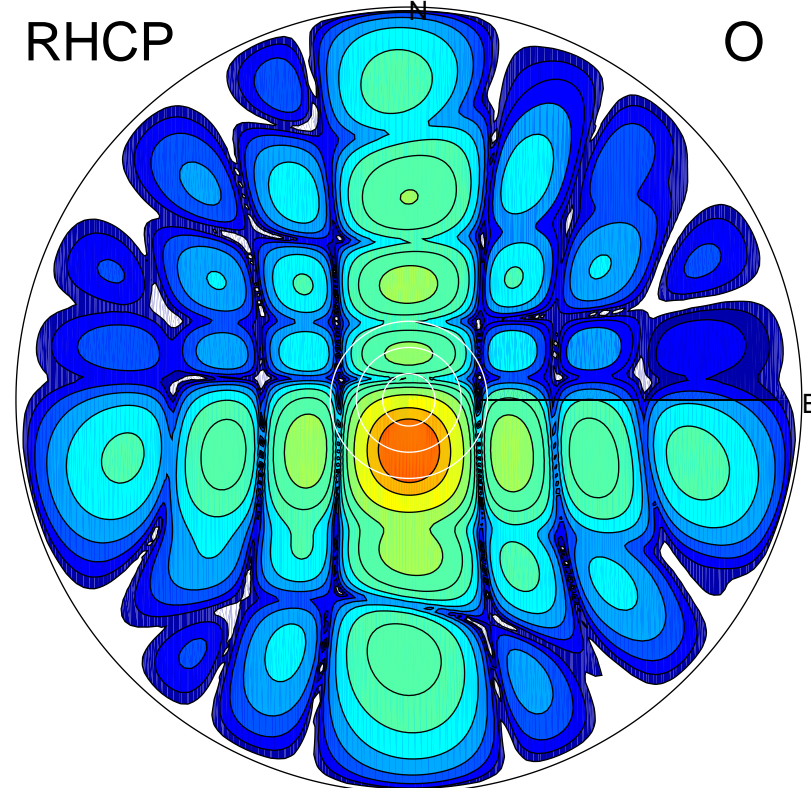
LHCP

X



RHCP

O



### ERP 4.7 MW

Peak gain 8.3 dBi at Az 178 Zen 19  
RHCP gain 18.8 dBi  
N-S peak 8.3 dBi at Zen -18.8  
N-S -3 dB beamwidth 11.2 deg.

### ERP 105.8 MW

Peak gain 21.8 dBi at Az 181 Zen 11  
LHCP gain 1.0 dBi  
N-S peak 21.9 dBi at Zen -11.5  
N-S -3 dB beamwidth 14.5 deg.