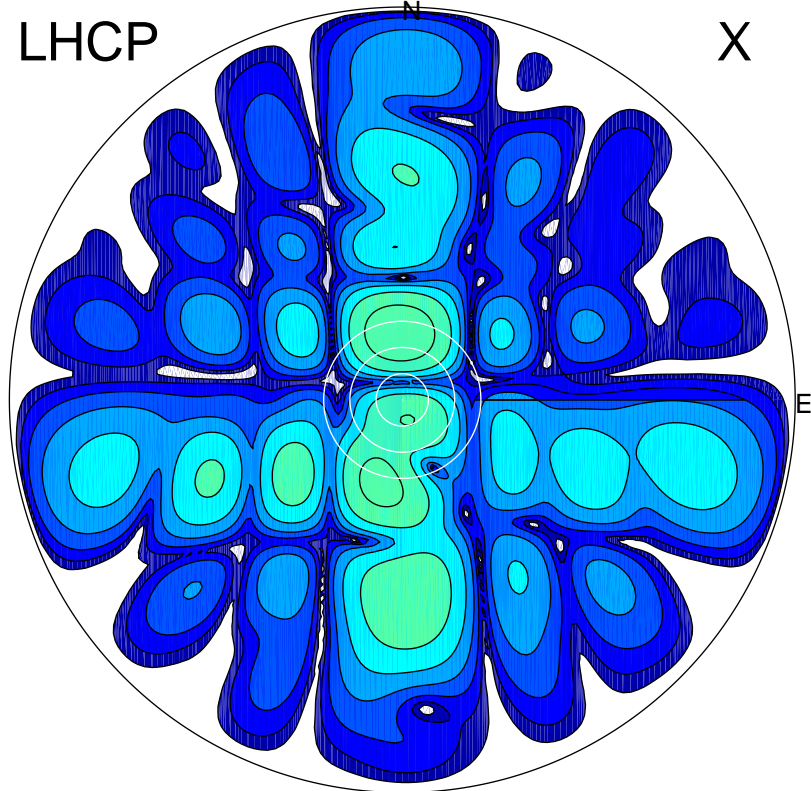


2017-08-18 12:45:00 A2 4.04000000 MHz 704.0 kW

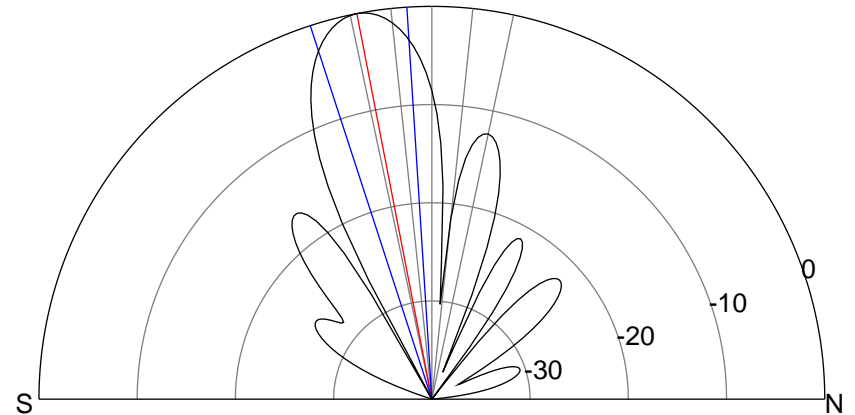
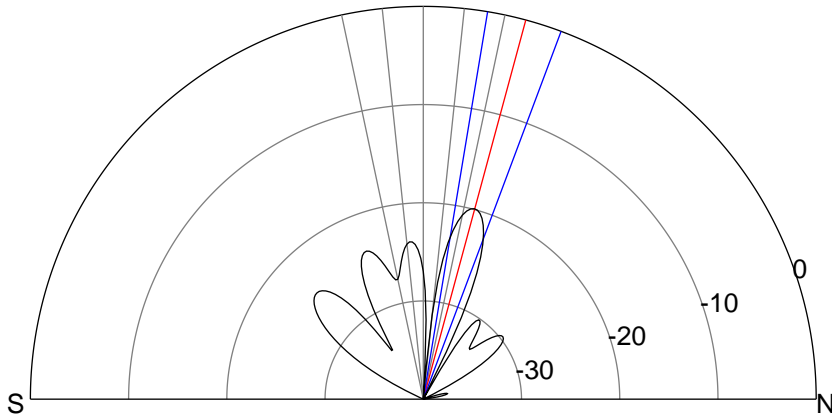
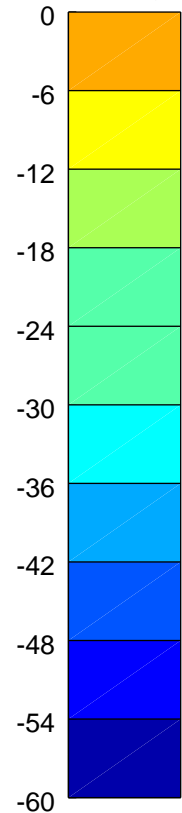
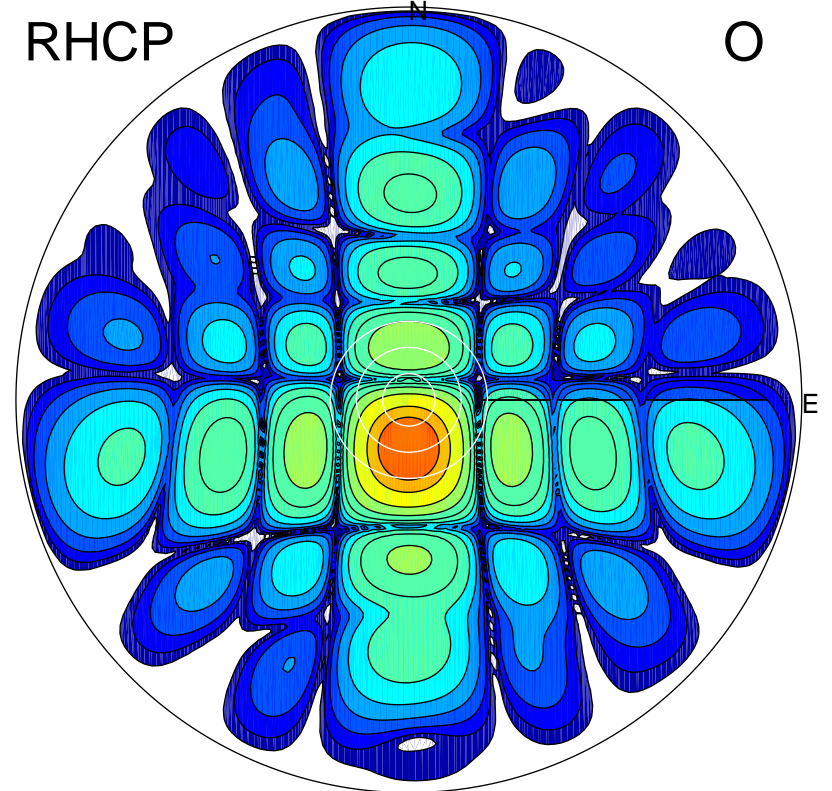
LHCP

X



RHCP

O



ERP 1.2 MW

Peak gain 2.4 dBi at Az 358 Zen 15
RHCP gain 8.5 dBi
N-S peak 2.4 dBi at Zen 15.1
N-S -3 dB beamwidth 11.1 deg.

ERP 119.5 MW

Peak gain 22.3 dBi at Az 180 Zen 11
LHCP gain -4.8 dBi
N-S peak 22.3 dBi at Zen -11.0
N-S -3 dB beamwidth 14.4 deg.