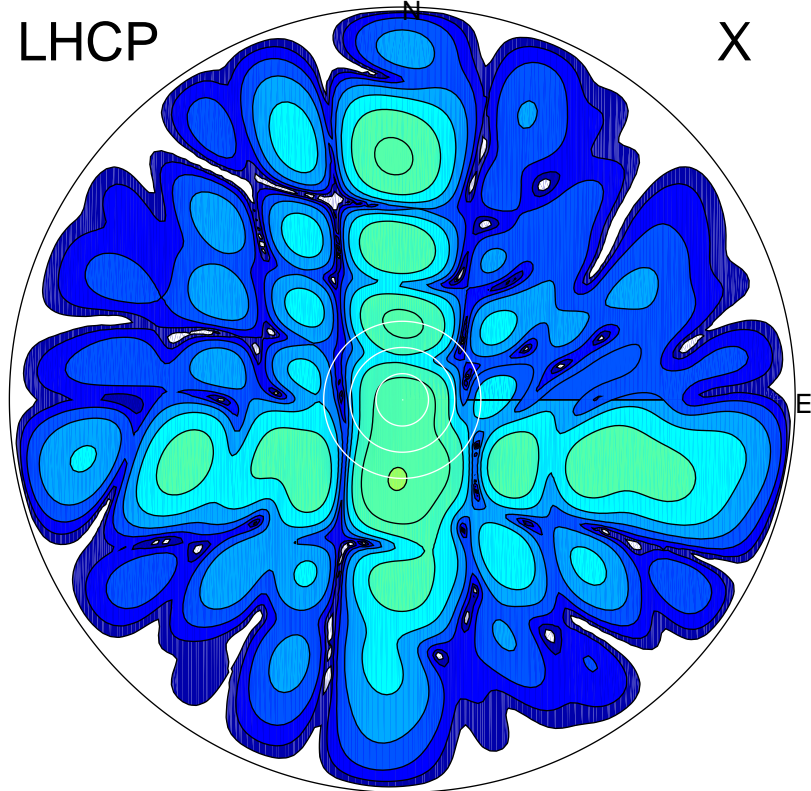


2017-08-15 10:58:02 A2 4.54400000 MHz 778.0 kW

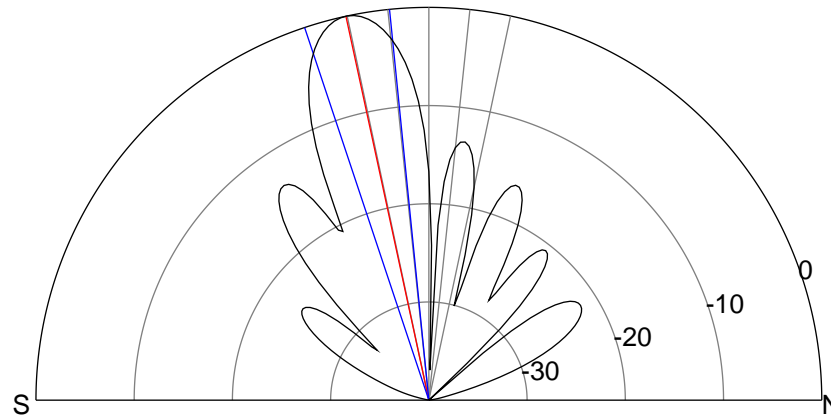
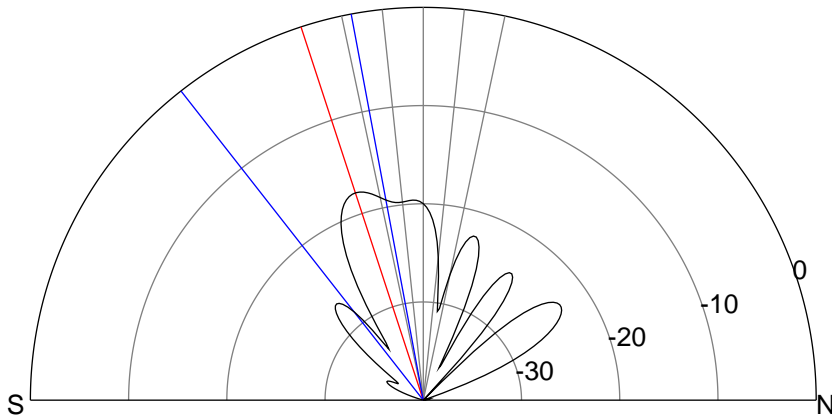
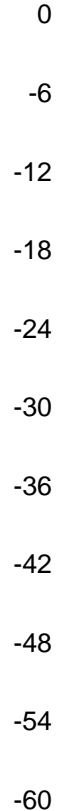
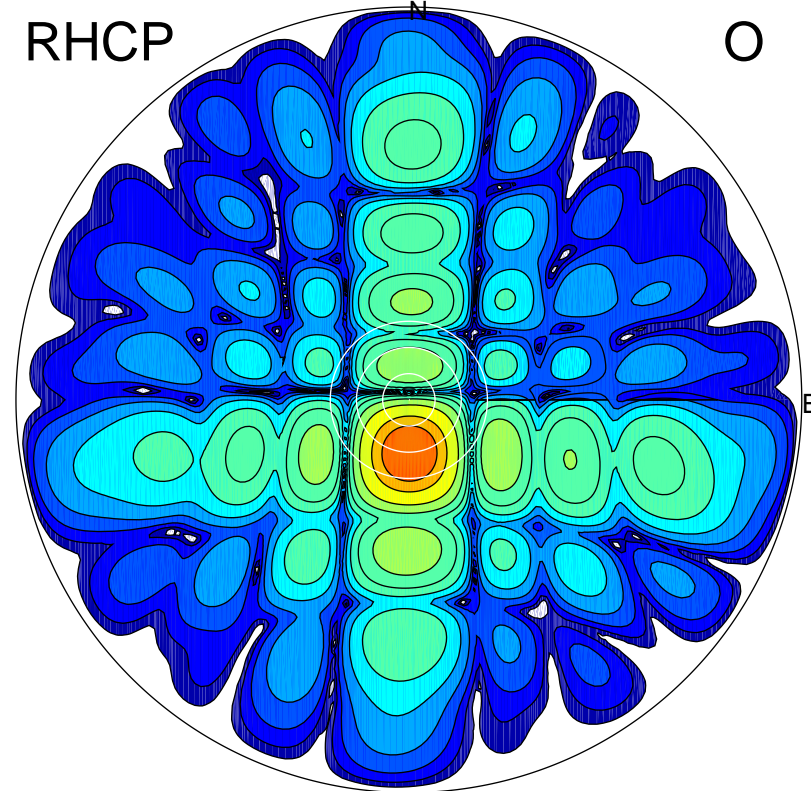
LHCP

X



RHCP

O



ERP 2.6 MW

Peak gain 5.3 dBi at Az 183 Zen 18
RHCP gain 20.6 dBi
N-S peak 5.2 dBi at Zen -18.1
N-S -3 dB beamwidth 27.5 deg.

ERP 155.4 MW

Peak gain 23.0 dBi at Az 178 Zen 12
LHCP gain 4.1 dBi
N-S peak 23.0 dBi at Zen -12.2
N-S -3 dB beamwidth 12.7 deg.