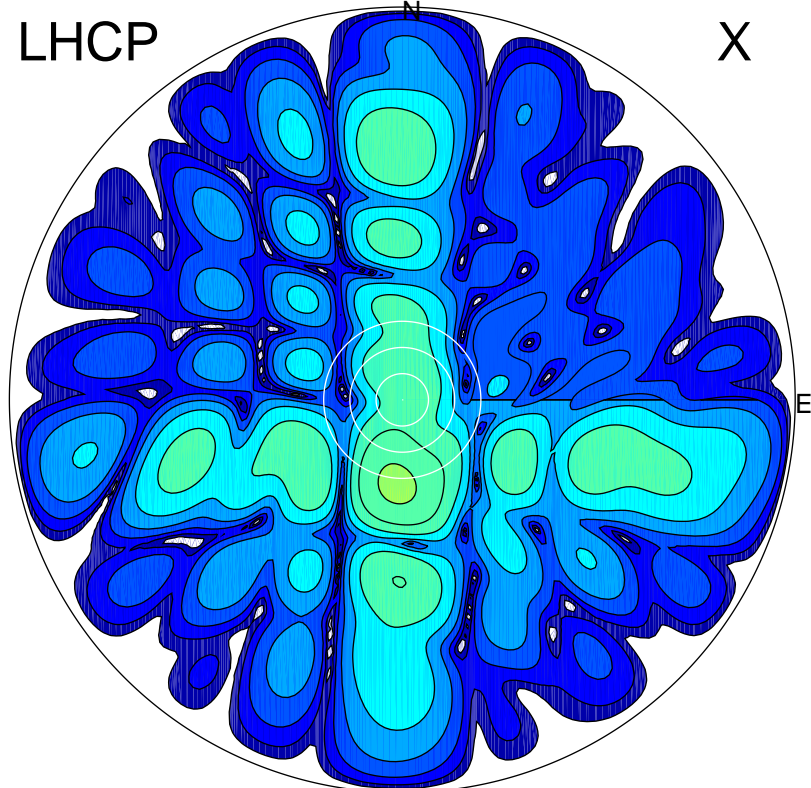


2017-08-14 10:30:00 A2 4.54400000 MHz 781.0 kW

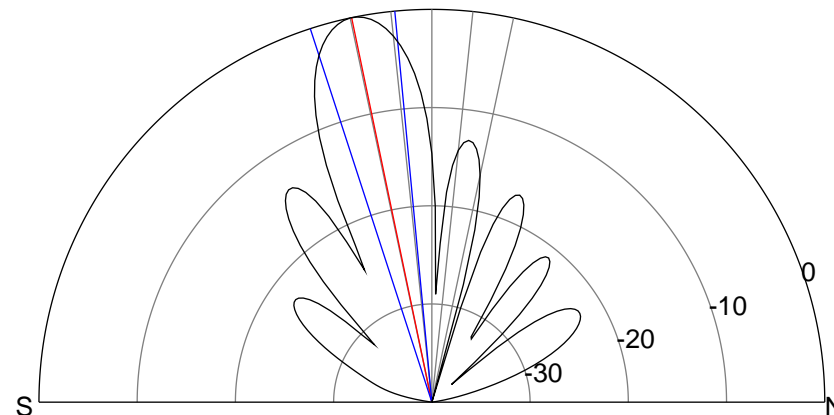
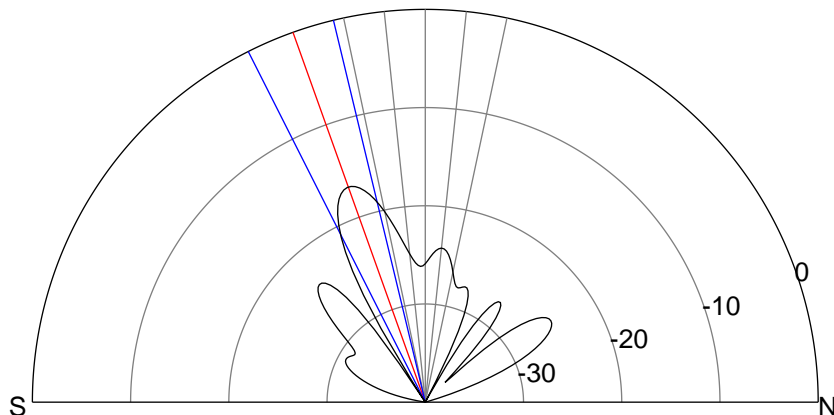
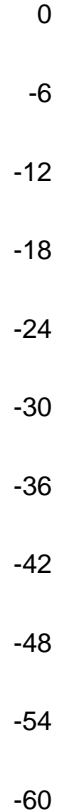
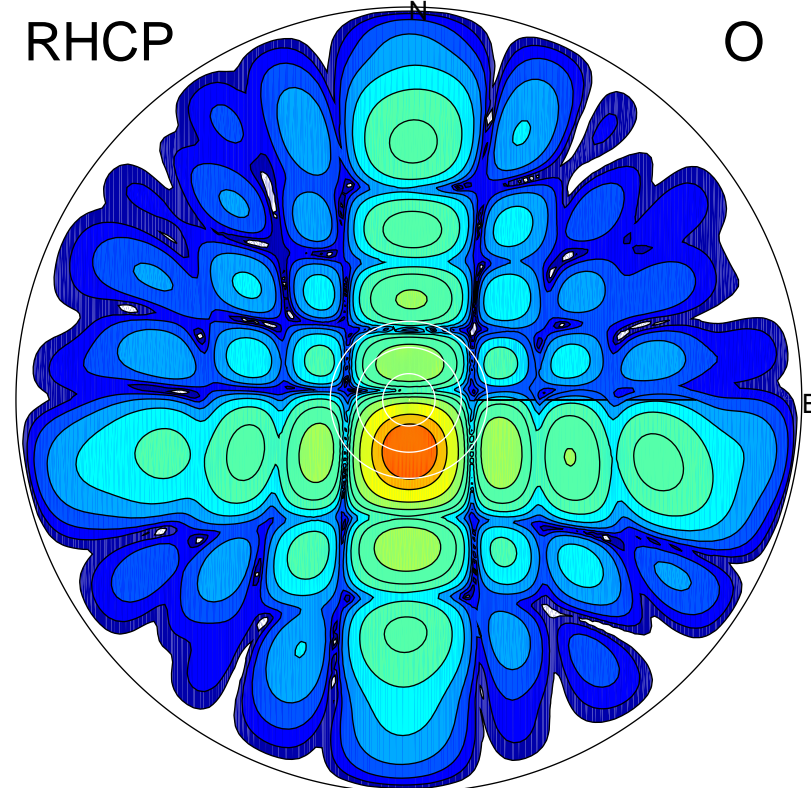
LHCP

X



RHCP

O



ERP 3.5 MW

Peak gain 6.5 dBi at Az 184 Zen 20
RHCP gain 17.8 dBi
N-S peak 6.3 dBi at Zen -19.7
N-S -3 dB beamwidth 13.3 deg.

ERP 158.7 MW

Peak gain 23.1 dBi at Az 179 Zen 12
LHCP gain 2.8 dBi
N-S peak 23.1 dBi at Zen -11.8
N-S -3 dB beamwidth 12.6 deg.