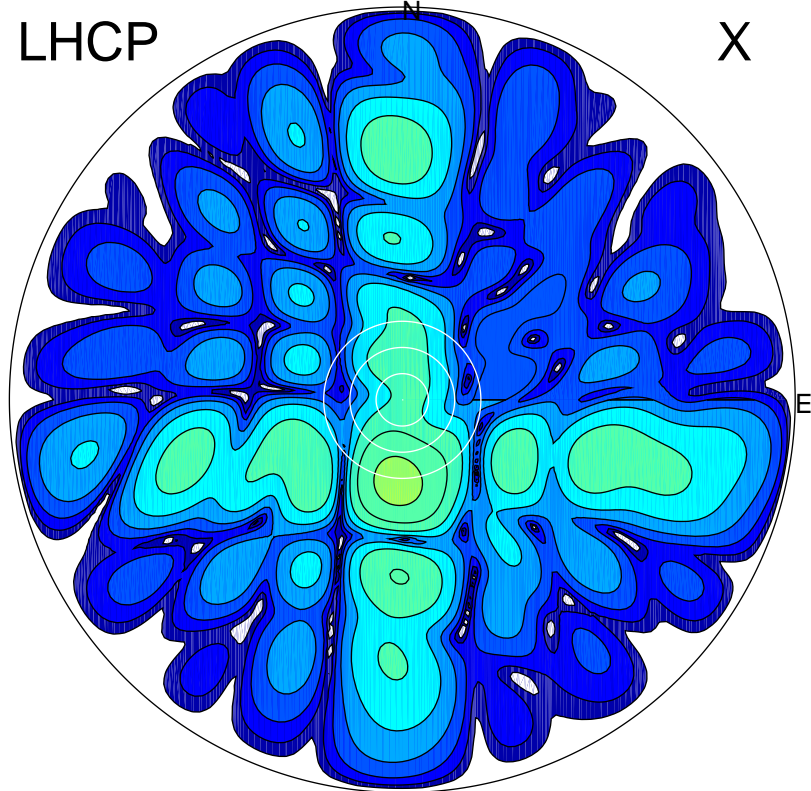


2017-08-14 09:46:45 A2 4.54400000 MHz 827.0 kW

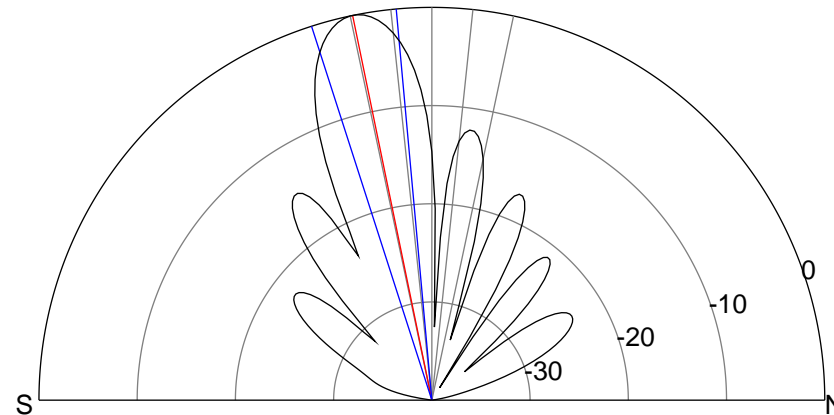
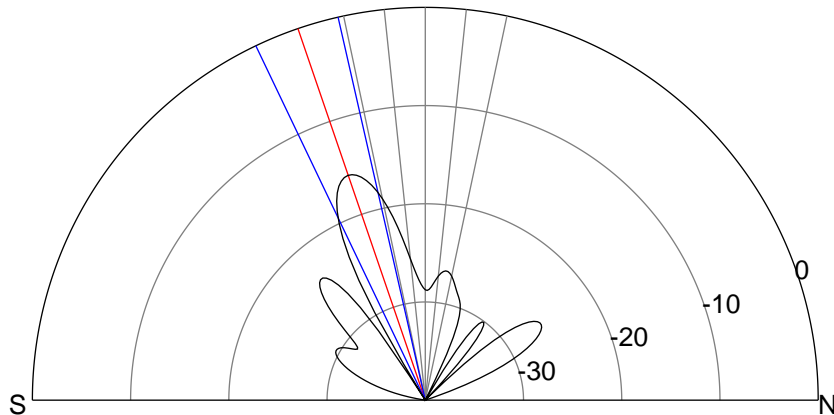
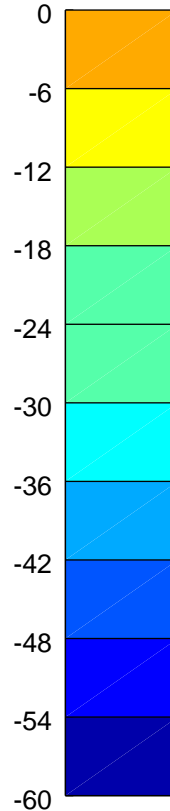
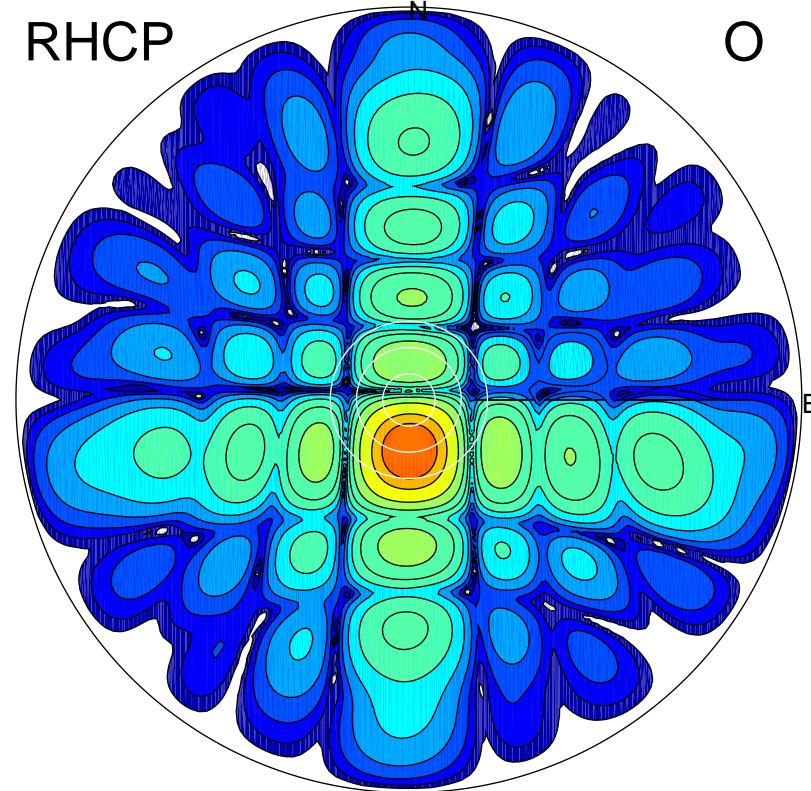
LHCP

X



RHCP

O



### ERP 4.5 MW

Peak gain 7.4 dBi at Az 184 Zen 19  
RHCP gain 19.0 dBi  
N-S peak 7.3 dBi at Zen -18.9  
N-S -3 dB beamwidth 12.7 deg.

### ERP 167.6 MW

Peak gain 23.1 dBi at Az 178 Zen 12  
LHCP gain 3.9 dBi  
N-S peak 23.1 dBi at Zen -11.6  
N-S -3 dB beamwidth 12.6 deg.