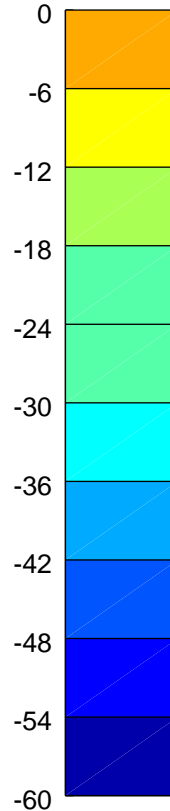
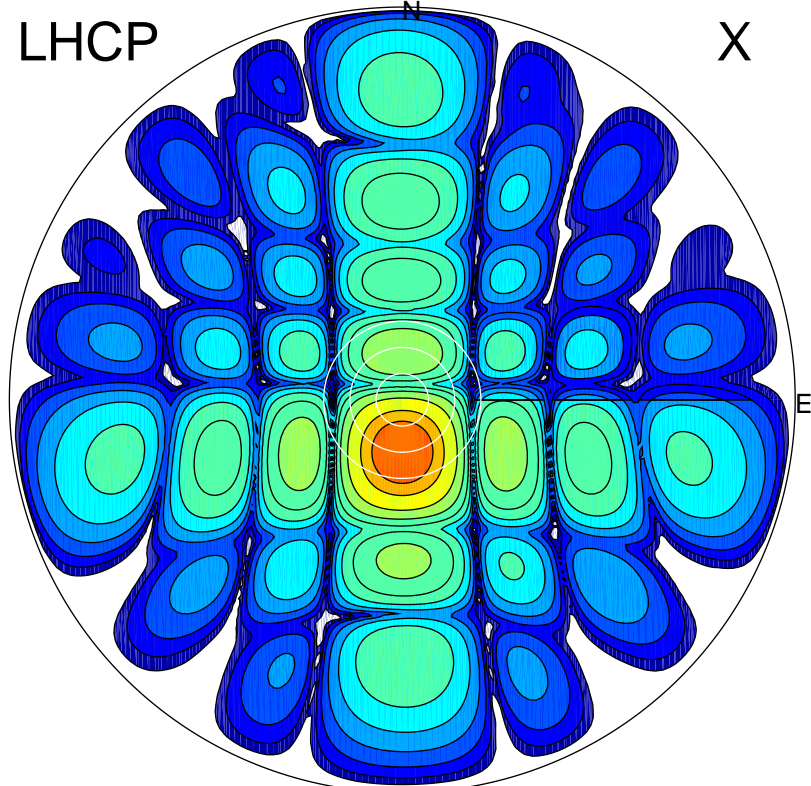


2017-08-13 08:45:01 A2 4.04000000 MHz 794.0 kW

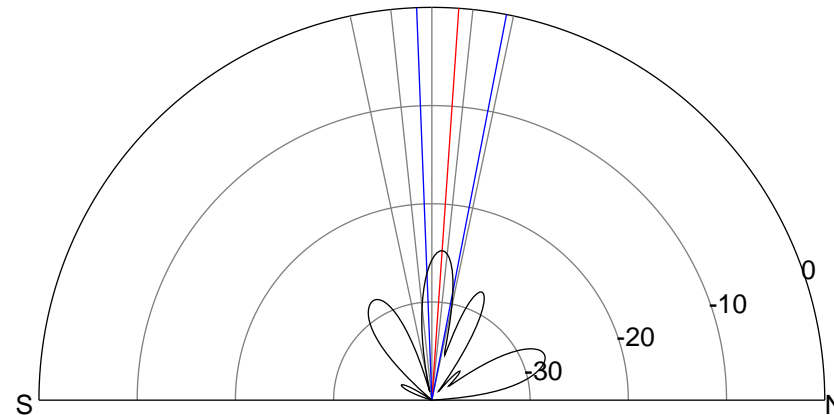
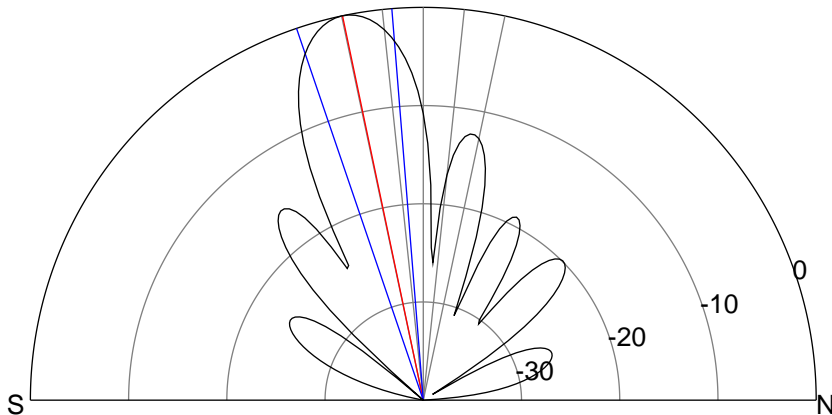
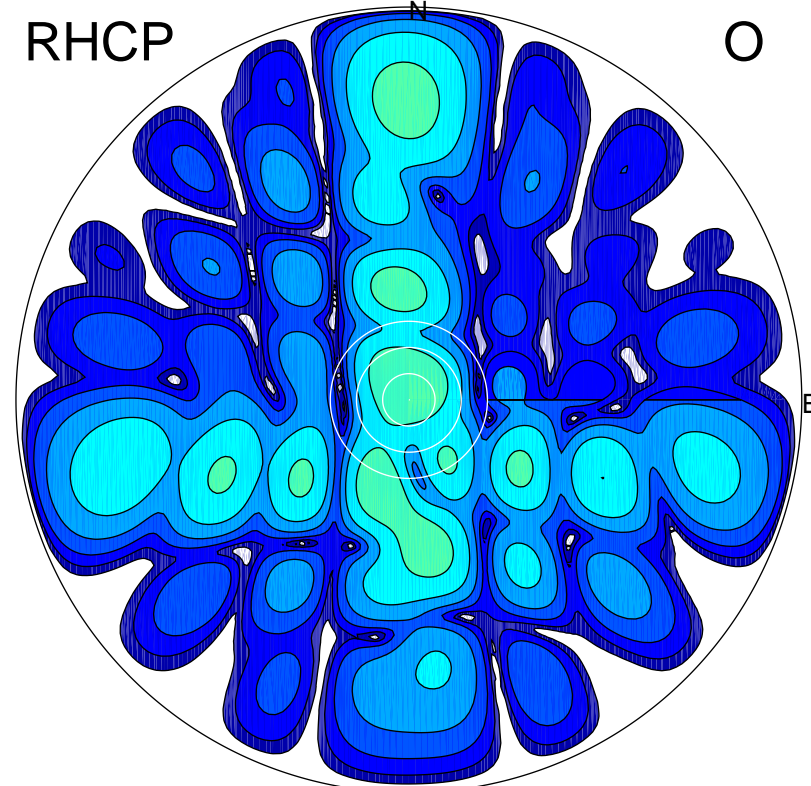
LHCP

X



RHCP

O



ERP 136.0 MW

Peak gain 22.3 dBi at Az 179 Zen 12
RHCP gain -15.7 dBi
N-S peak 22.3 dBi at Zen -11.9
N-S -3 dB beamwidth 14.2 deg.

ERP 0.5 MW

Peak gain -2.4 dBi at Az 359 Zen 4
LHCP gain -3.6 dBi
N-S peak -2.4 dBi at Zen 3.9
N-S -3 dB beamwidth 13.2 deg.