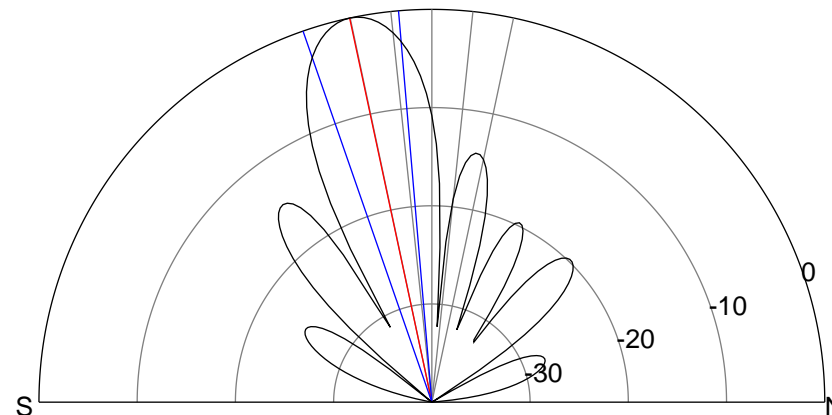
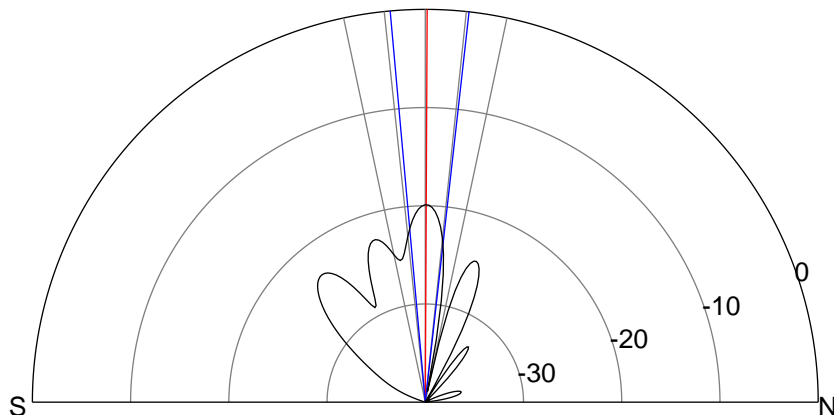
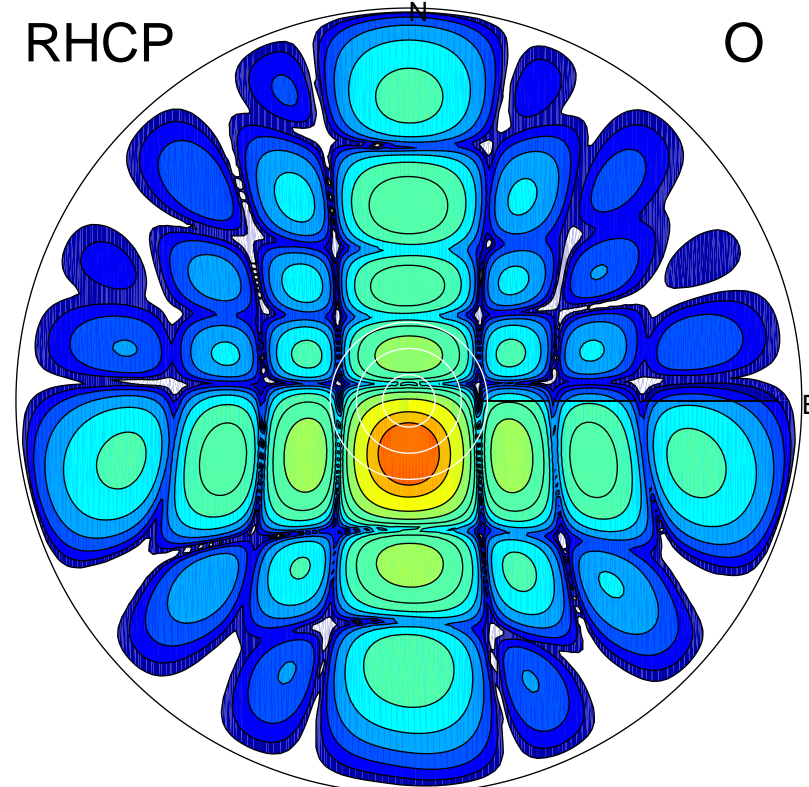
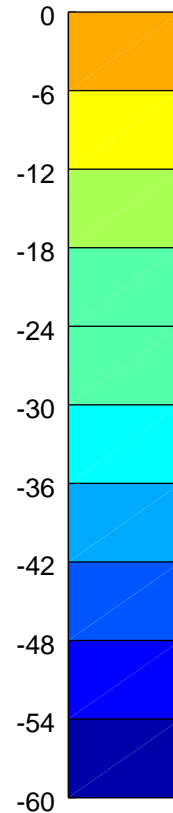
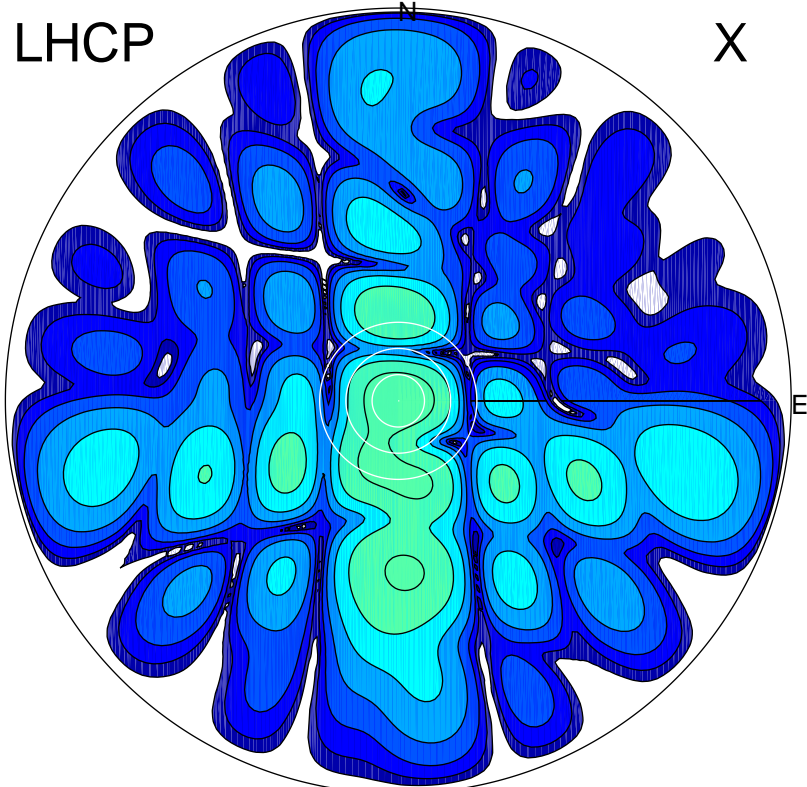


2017-08-13 08:45:00 A2 4.04000000 MHz 786.0 kW



ERP 1.4 MW

Peak gain 2.4 dBi at Az 340 Zen 0
RHCP gain 11.5 dBi
N-S peak 2.4 dBi at Zen 0.3
N-S -3 dB beamwidth 11.5 deg.

ERP 133.9 MW

Peak gain 22.3 dBi at Az 179 Zen 12
LHCP gain -2.5 dBi
N-S peak 22.3 dBi at Zen -12.1
N-S -3 dB beamwidth 14.3 deg.