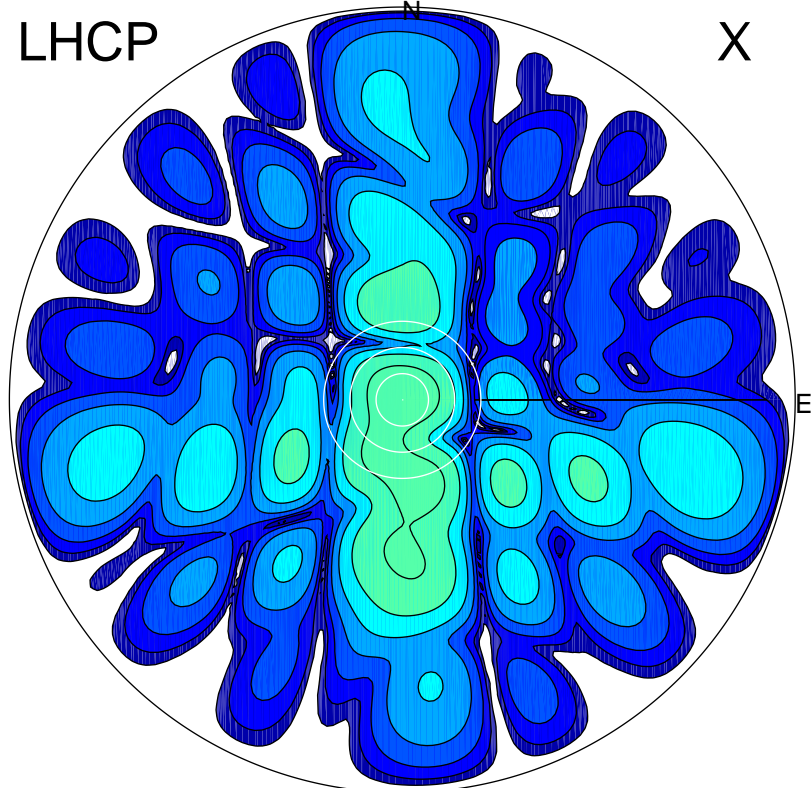


2017-08-13 08:40:02 A2 4.04000000 MHz 815.0 kW

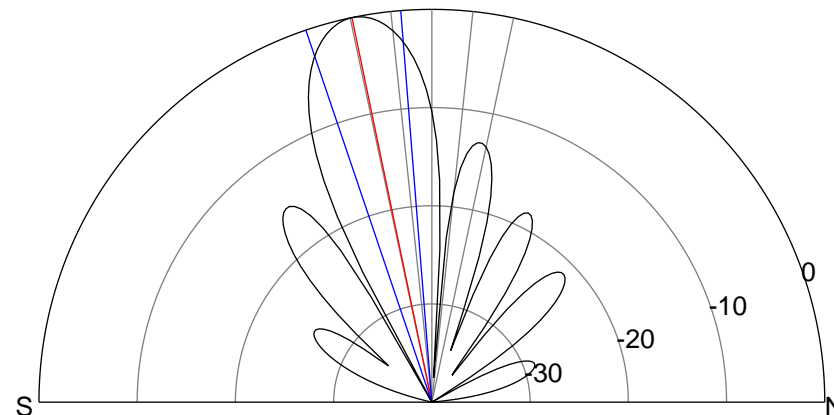
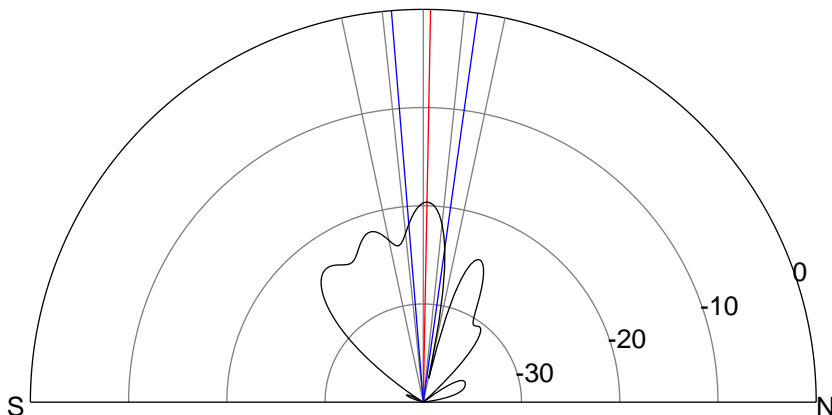
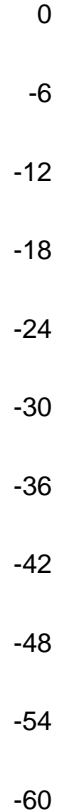
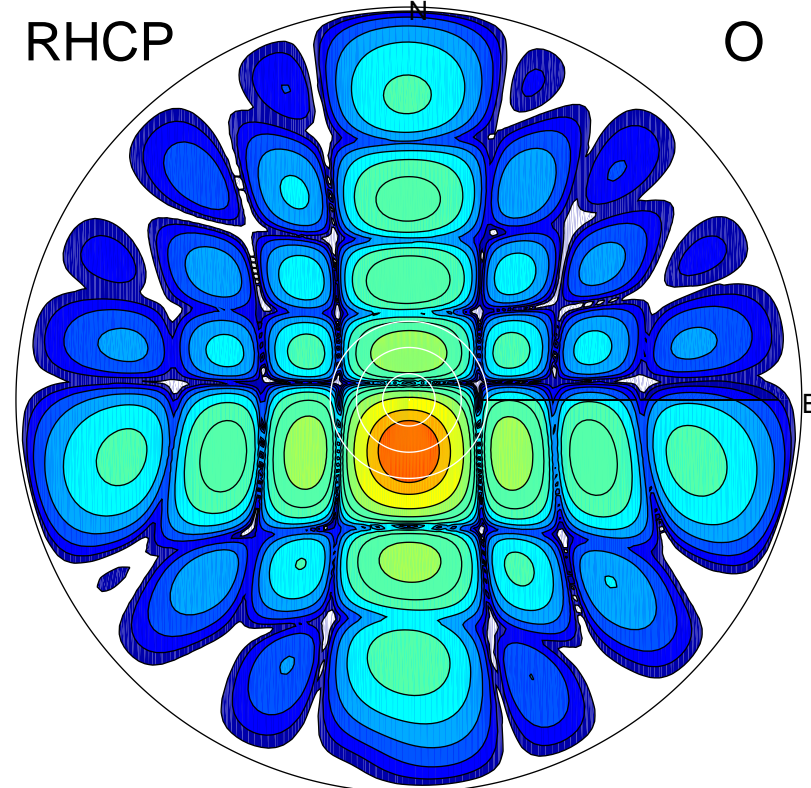
LHCP

X



RHCP

O



ERP 1.5 MW

Peak gain 2.7 dBi at Az 13 Zen 1
RHCP gain 9.1 dBi
N-S peak 2.7 dBi at Zen 1.1
N-S -3 dB beamwidth 12.6 deg.

ERP 138.9 MW

Peak gain 22.3 dBi at Az 180 Zen 12
LHCP gain -0.8 dBi
N-S peak 22.3 dBi at Zen -11.7
N-S -3 dB beamwidth 14.2 deg.