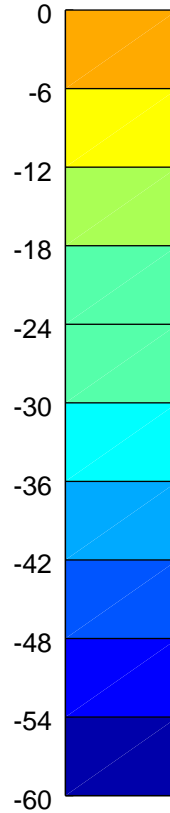
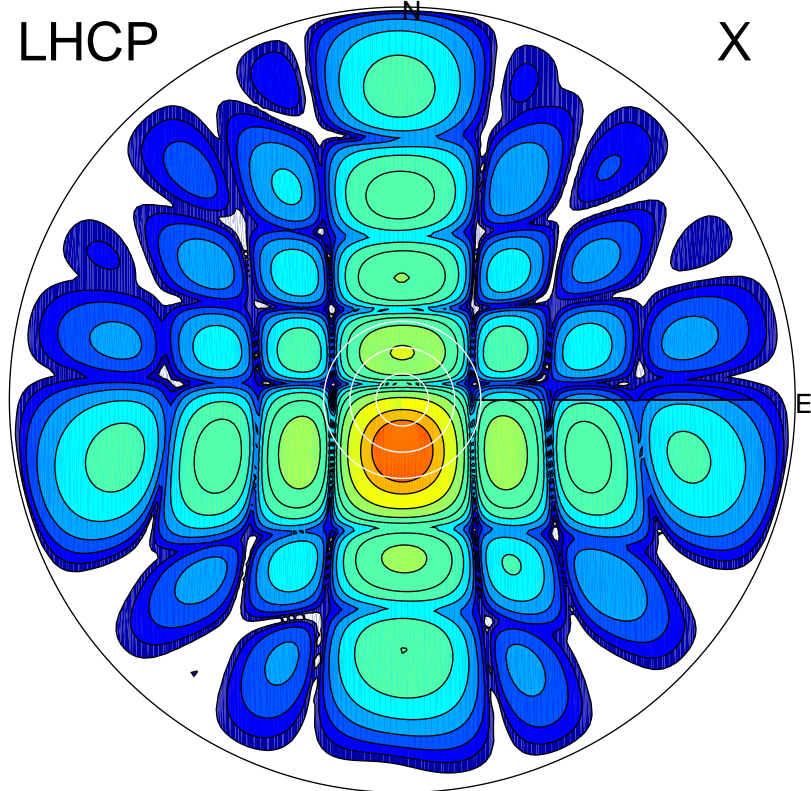


2017-08-13 08:40:01 A2 4.04000000 MHz 834.0 kW

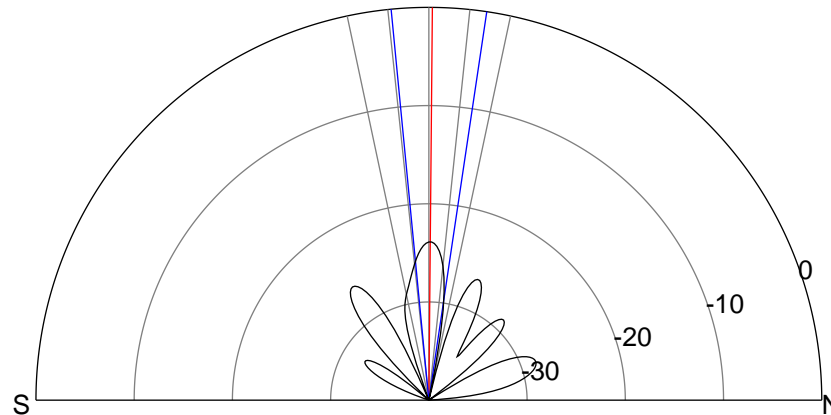
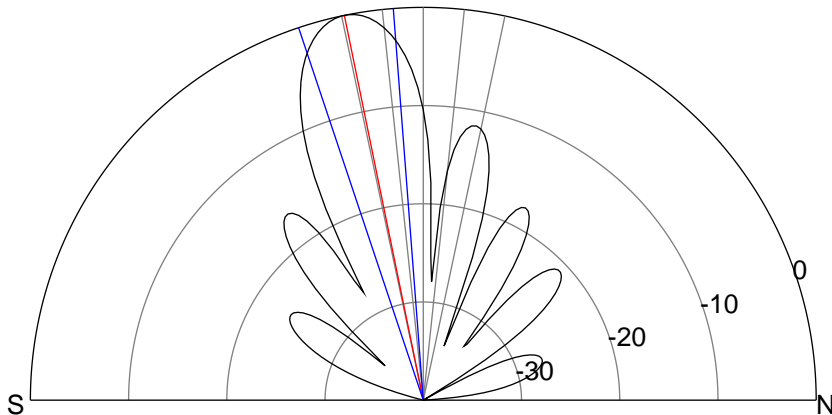
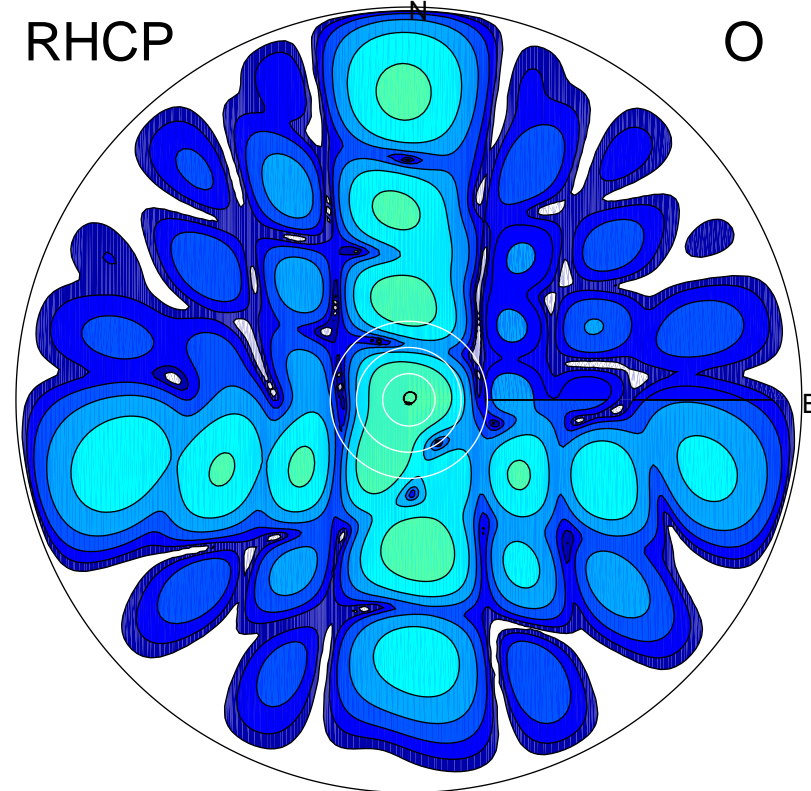
LHCP

X



RHCP

O



### ERP 142.7 MW

Peak gain 22.3 dBi at Az 179 Zen 12  
RHCP gain -7.0 dBi  
N-S peak 22.3 dBi at Zen -11.6  
N-S -3 dB beamwidth 14.1 deg.

### ERP 0.6 MW

Peak gain -1.5 dBi at Az 30 Zen 1  
LHCP gain 9.3 dBi  
N-S peak -1.5 dBi at Zen 0.5  
N-S -3 dB beamwidth 14.0 deg.