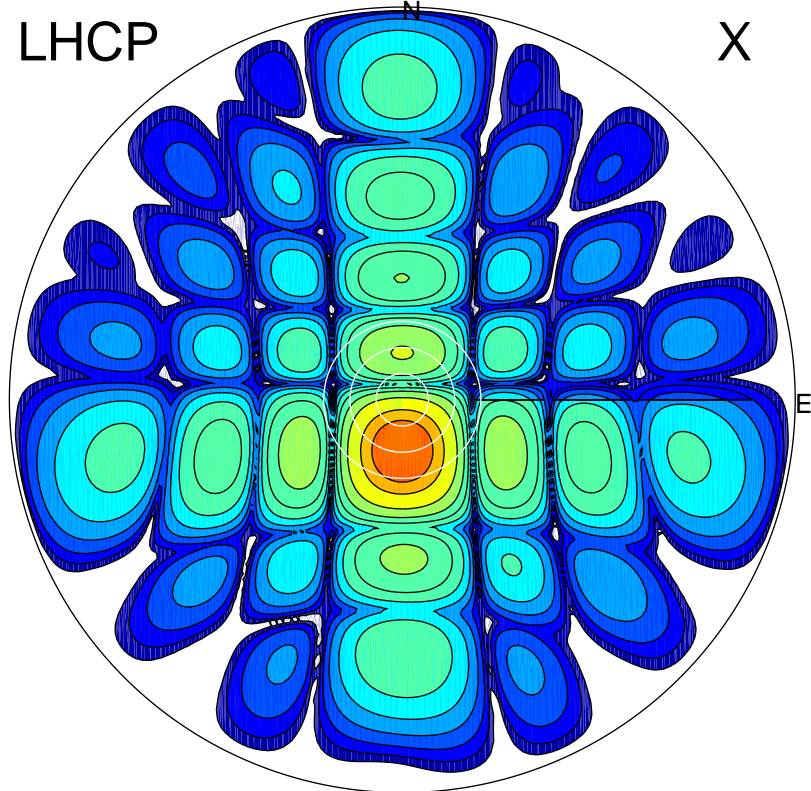


2017-08-13 08:40:00 A2 4.04000000 MHz 827.0 kW

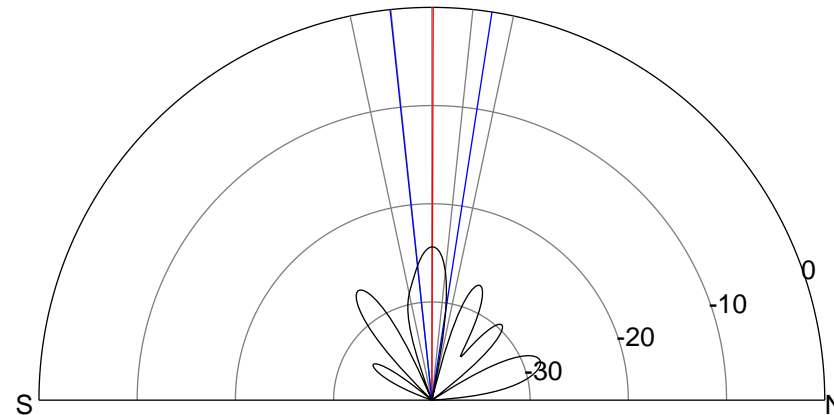
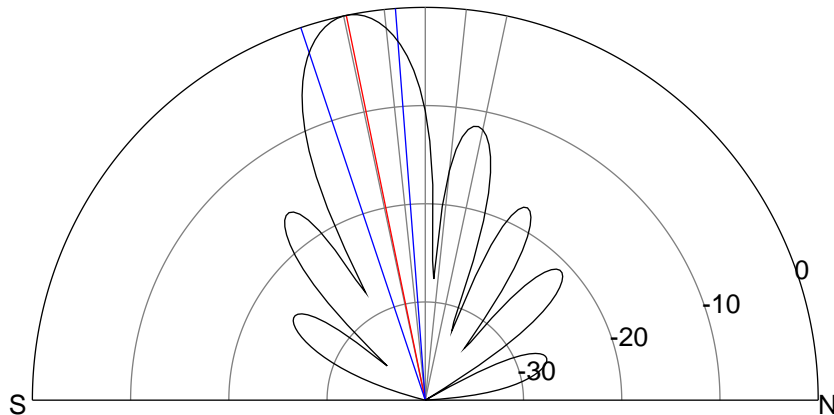
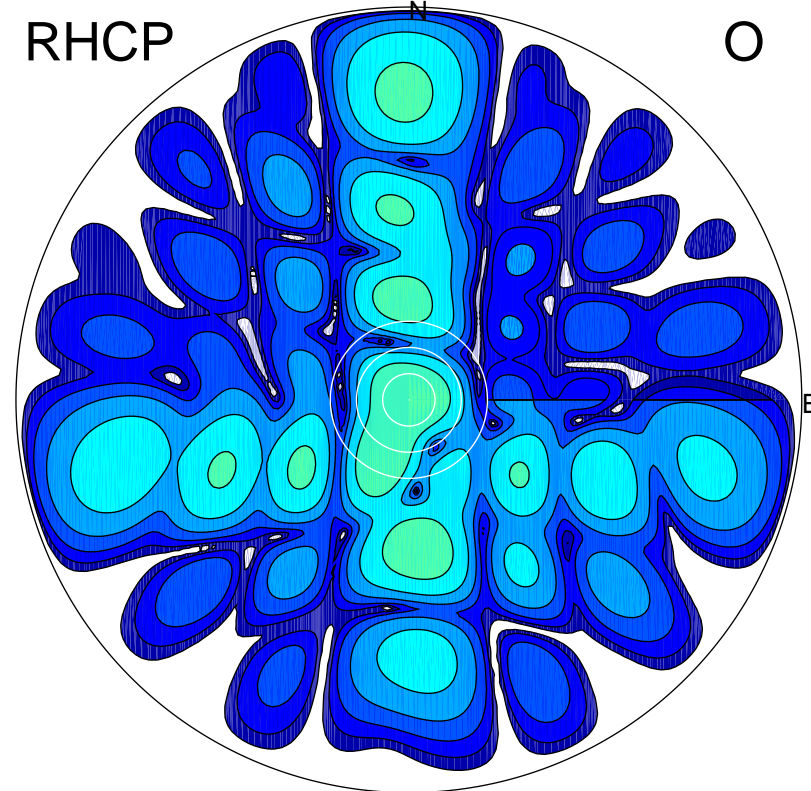
LHCP

X



RHCP

O



ERP 141.8 MW

Peak gain 22.3 dBi at Az 179 Zen 12
RHCP gain -6.9 dBi
N-S peak 22.4 dBi at Zen -11.6
N-S -3 dB beamwidth 14.1 deg.

ERP 0.5 MW

Peak gain -2.0 dBi at Az 281 Zen 0
LHCP gain 11.8 dBi
N-S peak -2.0 dBi at Zen 0.2
N-S -3 dB beamwidth 14.9 deg.