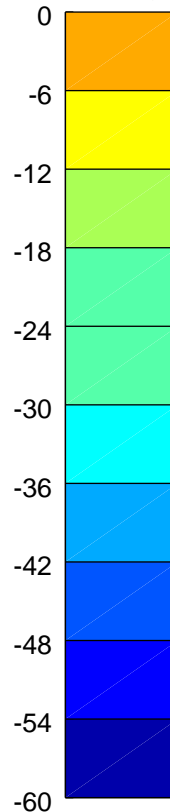
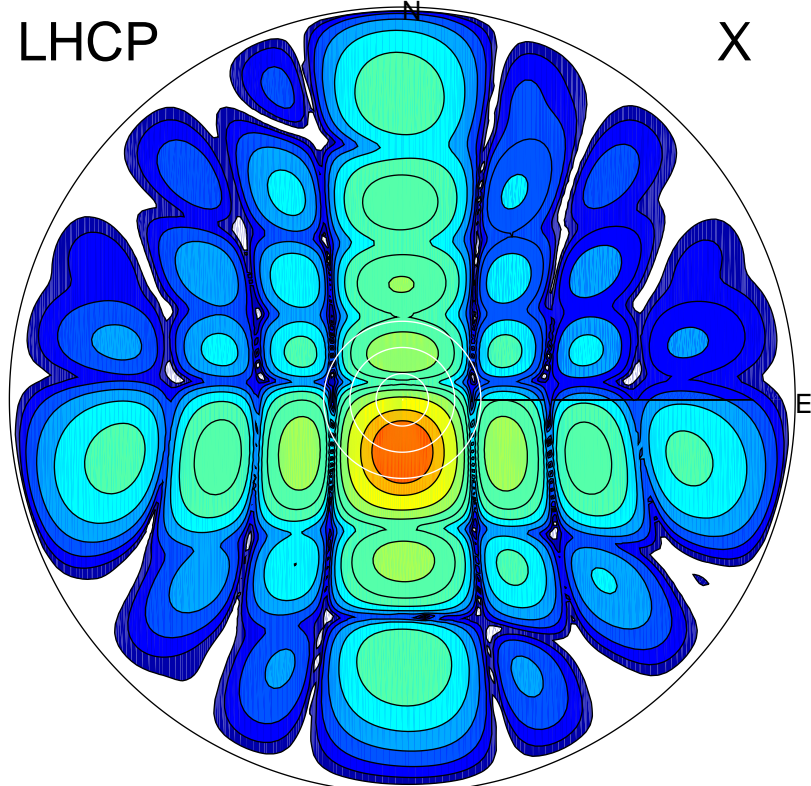


2017-08-07 00:45:01 A2 4.04000000 MHz 745.0 kW

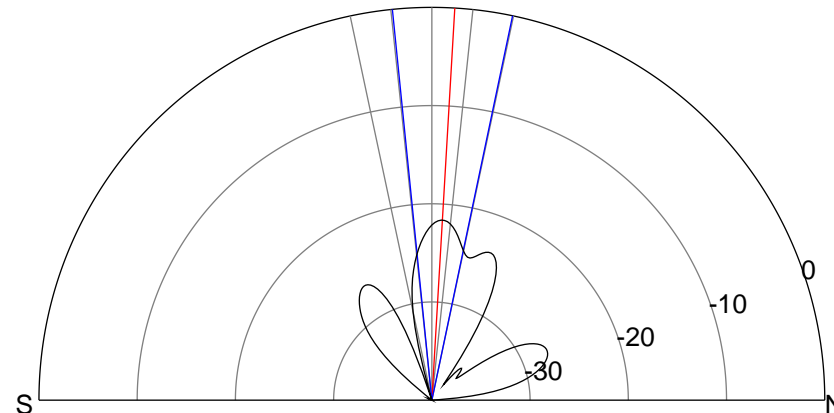
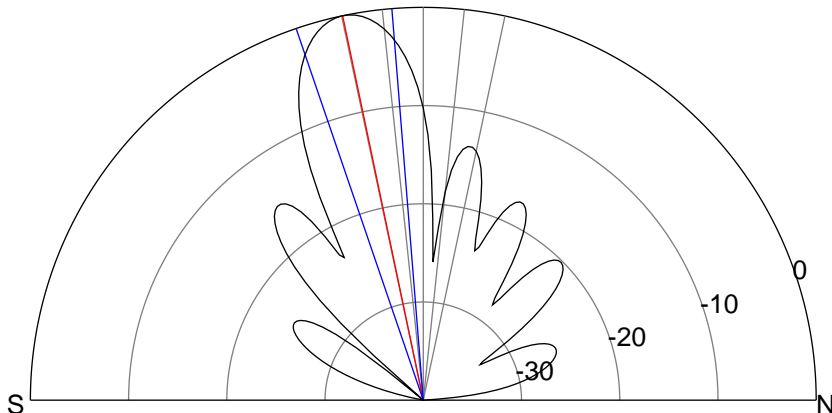
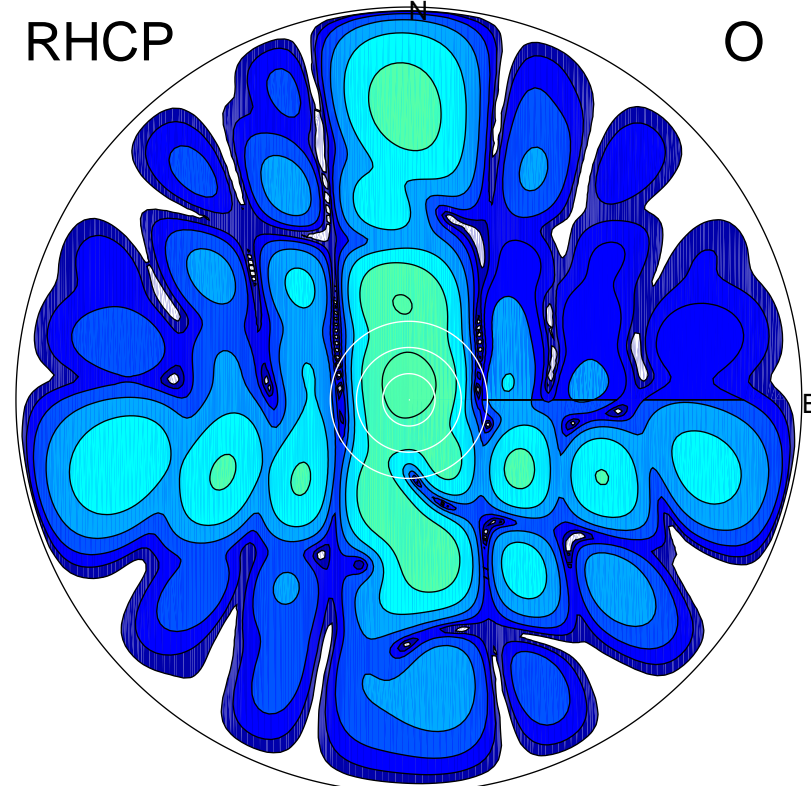
LHCP

X



RHCP

O



### ERP 126.1 MW

Peak gain 22.3 dBi at Az 180 Zen 12  
RHCP gain -8.5 dBi  
N-S peak 22.3 dBi at Zen -11.8  
N-S -3 dB beamwidth 14.3 deg.

### ERP 0.9 MW

Peak gain 0.6 dBi at Az 0 Zen 3  
LHCP gain 0.7 dBi  
N-S peak 0.7 dBi at Zen 3.3  
N-S -3 dB beamwidth 17.6 deg.