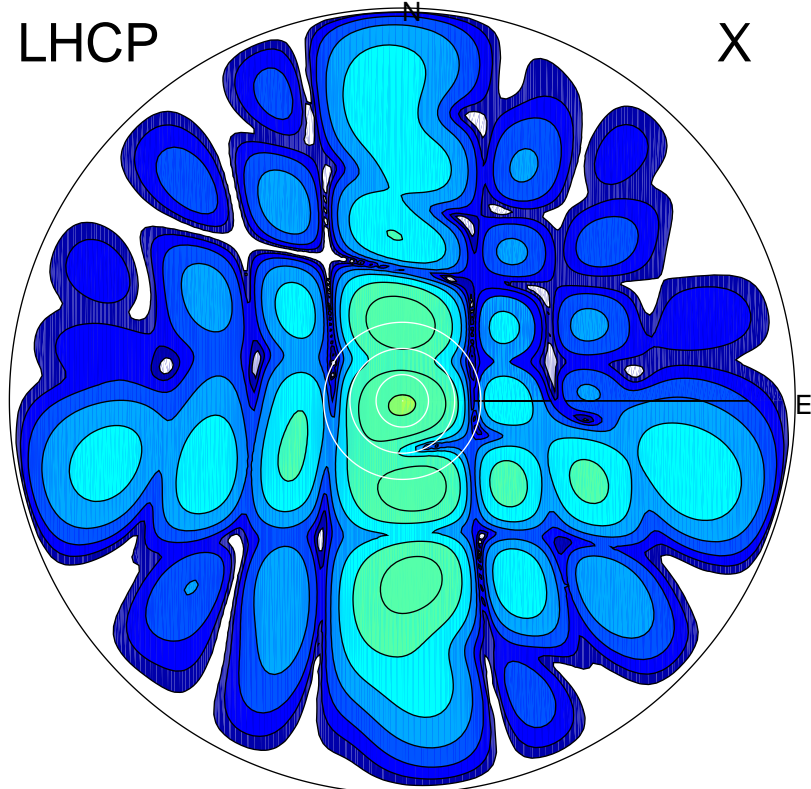


2017-08-07 00:45:00 A2 4.04000000 MHz 773.0 kW

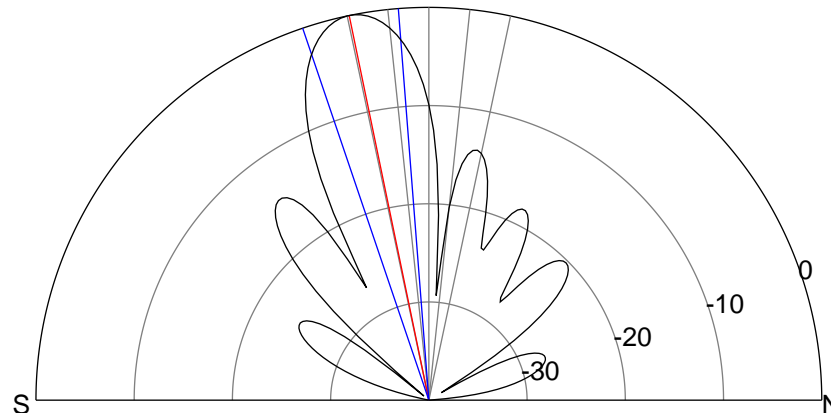
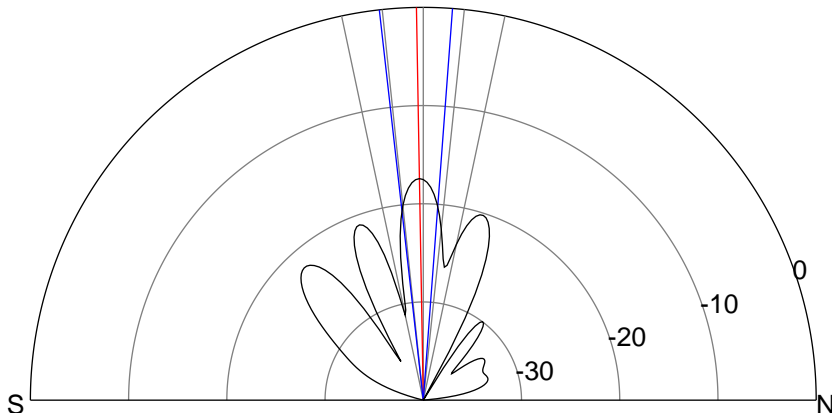
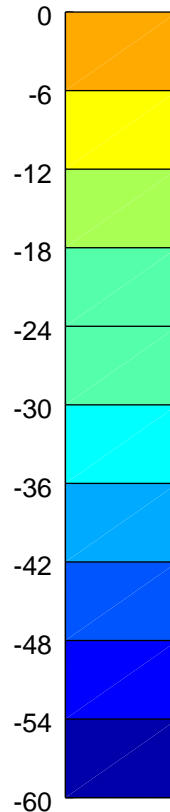
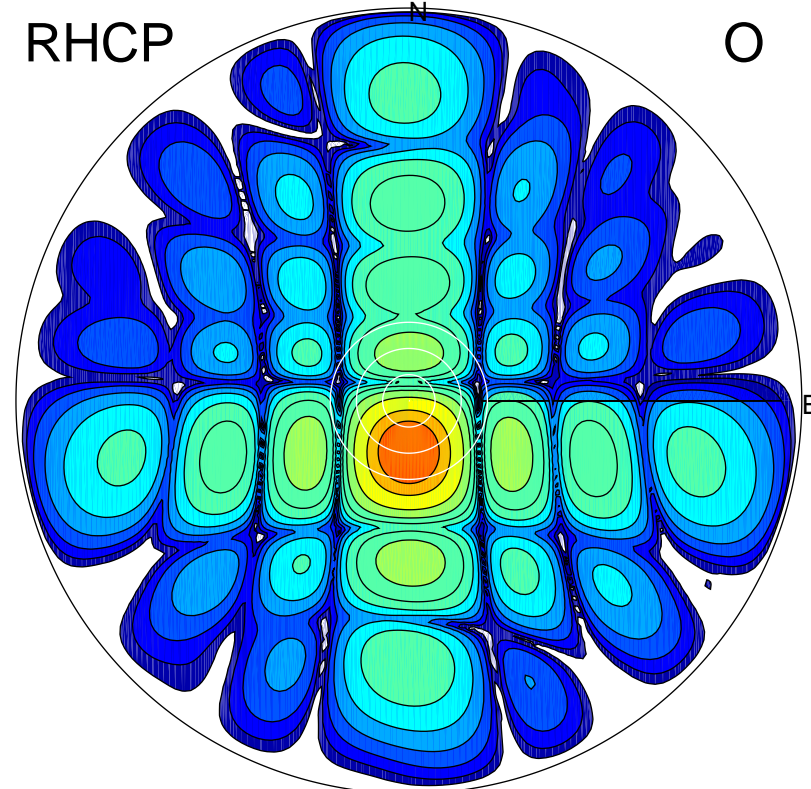
LHCP

X



RHCP

O



### ERP 2.3 MW

Peak gain 4.8 dBi at Az 185 Zen 1  
RHCP gain 14.4 dBi  
N-S peak 4.8 dBi at Zen -1.0  
N-S -3 dB beamwidth 10.7 deg.

### ERP 129.0 MW

Peak gain 22.2 dBi at Az 179 Zen 12  
LHCP gain -9.2 dBi  
N-S peak 22.2 dBi at Zen -11.7  
N-S -3 dB beamwidth 14.3 deg.