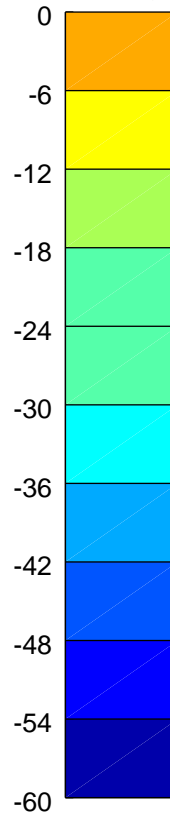
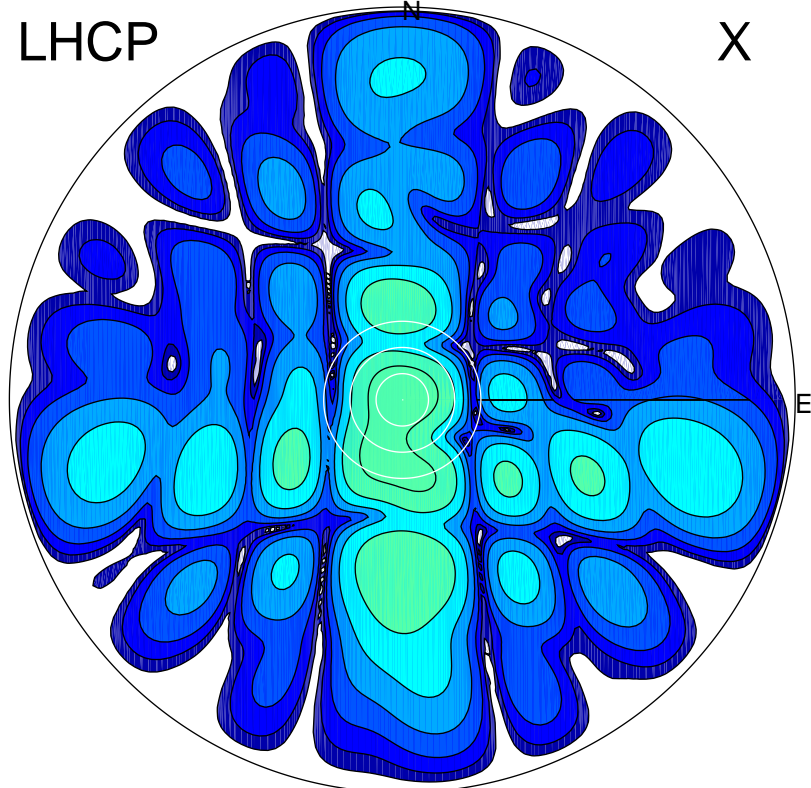


2017-08-07 00:40:02 A2 4.04000000 MHz 789.0 kW

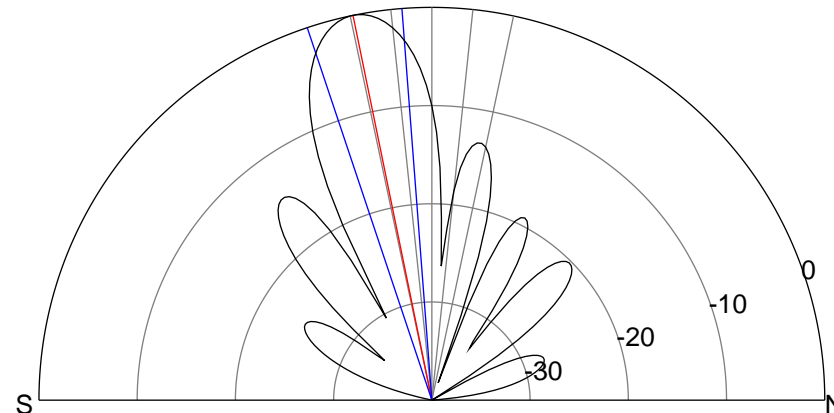
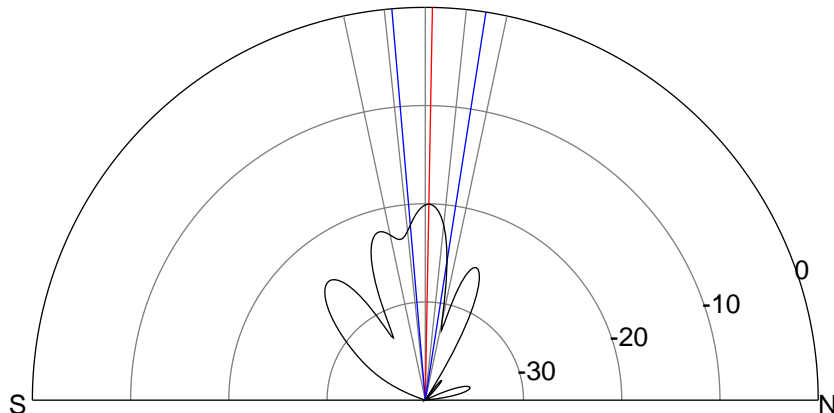
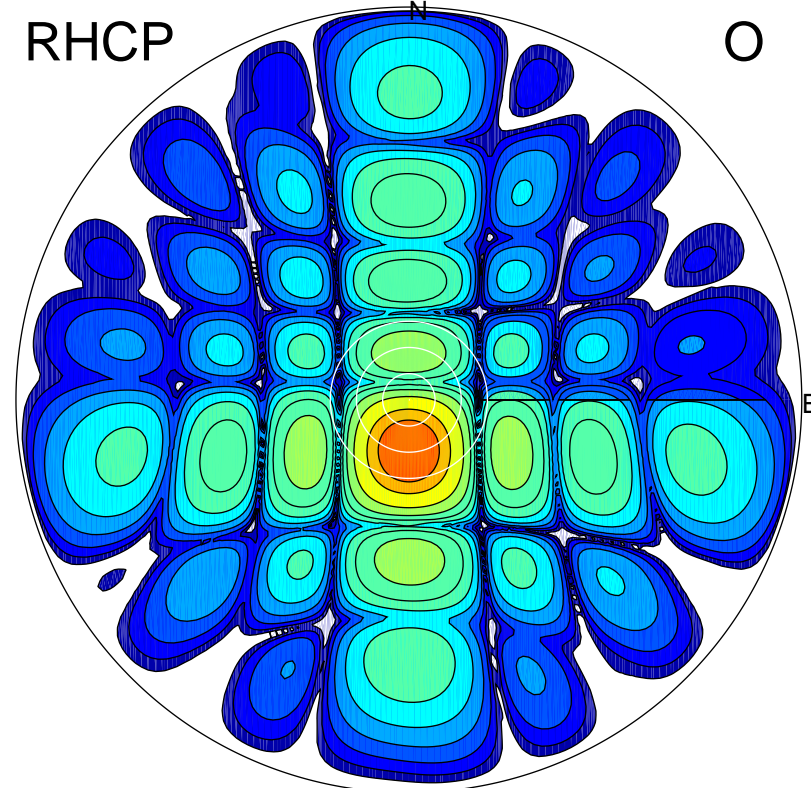
LHCP

X



RHCP

O



ERP 1.3 MW

Peak gain 2.3 dBi at Az 7 Zen 1
RHCP gain 9.6 dBi
N-S peak 2.3 dBi at Zen 1.0
N-S -3 dB beamwidth 13.8 deg.

ERP 134.5 MW

Peak gain 22.3 dBi at Az 179 Zen 12
LHCP gain -0.6 dBi
N-S peak 22.3 dBi at Zen -11.6
N-S -3 dB beamwidth 14.1 deg.