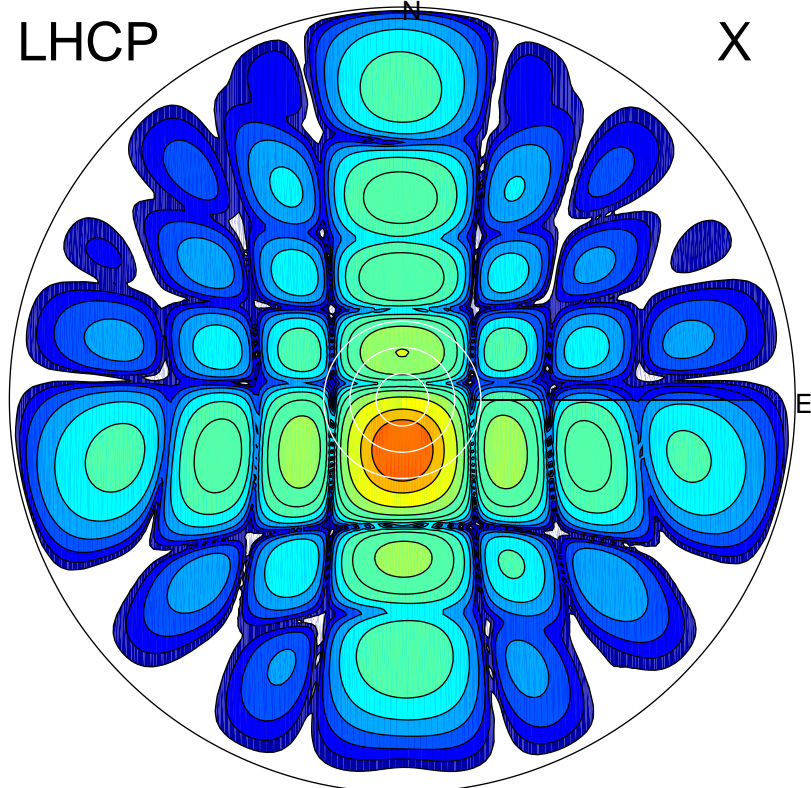


2017-08-07 00:40:01 A2 4.04000000 MHz 813.0 kW

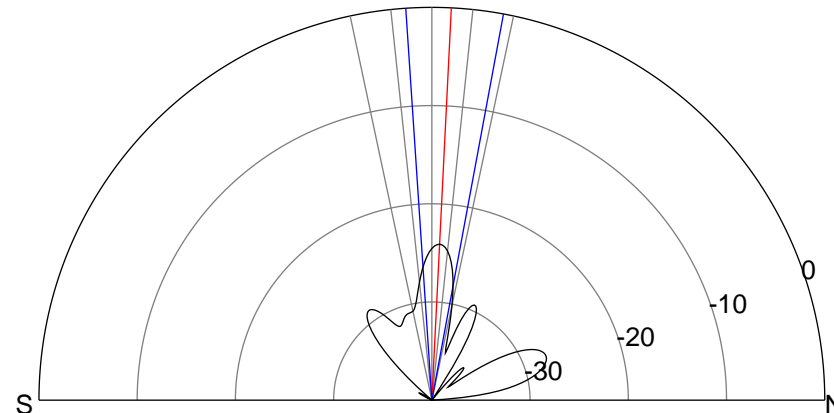
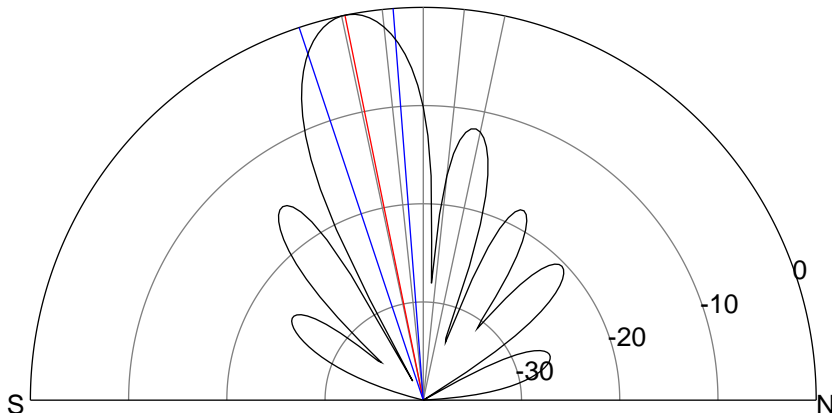
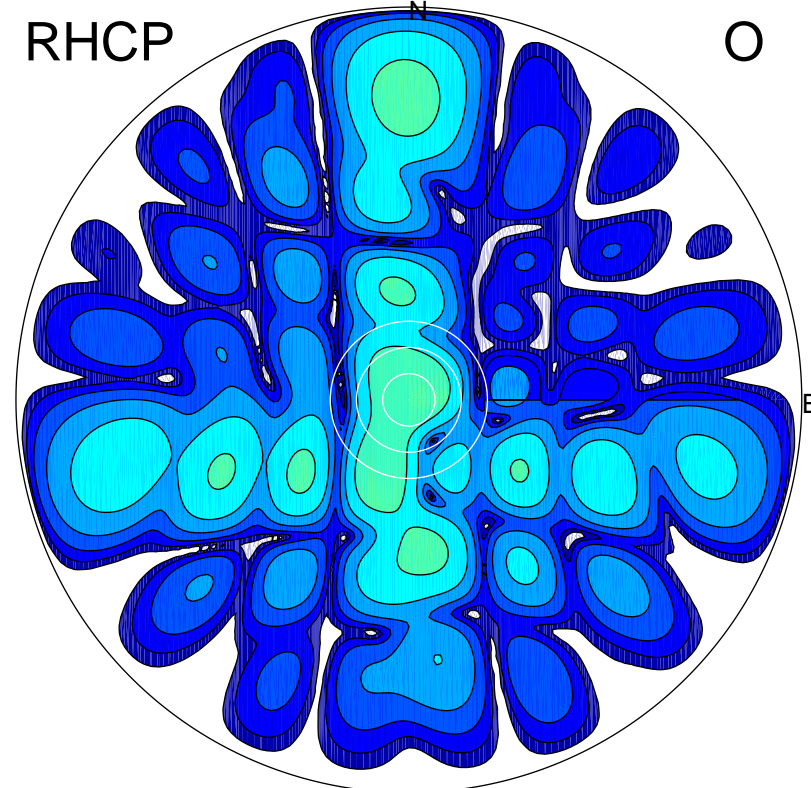
LHCP

X



RHCP

O



ERP 140.1 MW

Peak gain 22.4 dBi at Az 178 Zen 11

RHCP gain -8.9 dBi

N-S peak 22.4 dBi at Zen -11.5

N-S -3 dB beamwidth 14.0 deg.

ERP 0.5 MW

Peak gain -1.7 dBi at Az 5 Zen 3

LHCP gain -1.3 dBi

N-S peak -1.7 dBi at Zen 2.8

N-S -3 dB beamwidth 14.3 deg.