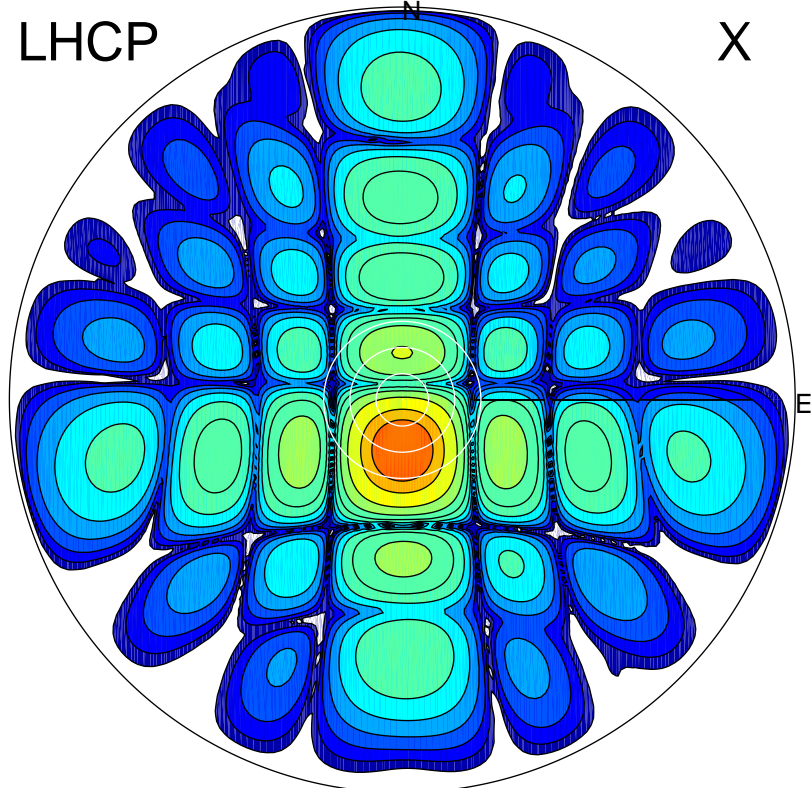


2017-08-07 00:40:00 A2 4.04000000 MHz 808.0 kW

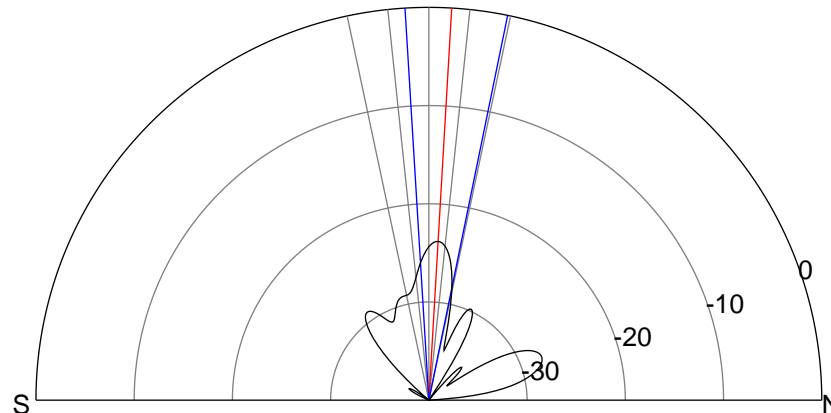
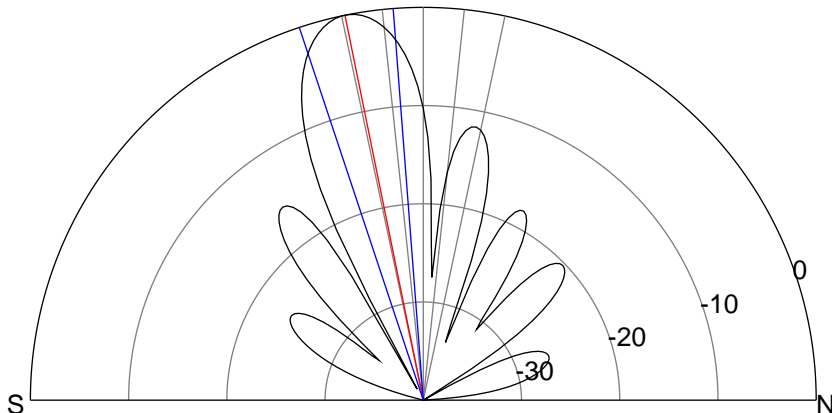
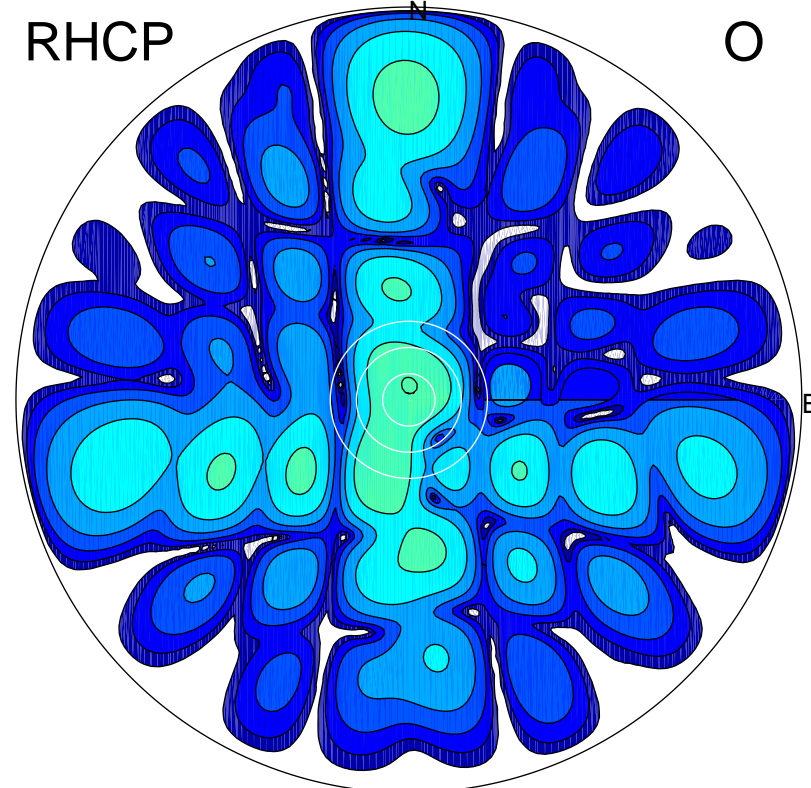
LHCP

X



RHCP

O



ERP 139.2 MW

Peak gain 22.4 dBi at Az 179 Zen 11
RHCP gain -6.9 dBi
N-S peak 22.4 dBi at Zen -11.5
N-S -3 dB beamwidth 14.0 deg.

ERP 0.6 MW

Peak gain -1.4 dBi at Az 1 Zen 3
LHCP gain -1.9 dBi
N-S peak -1.4 dBi at Zen 3.3
N-S -3 dB beamwidth 15.1 deg.