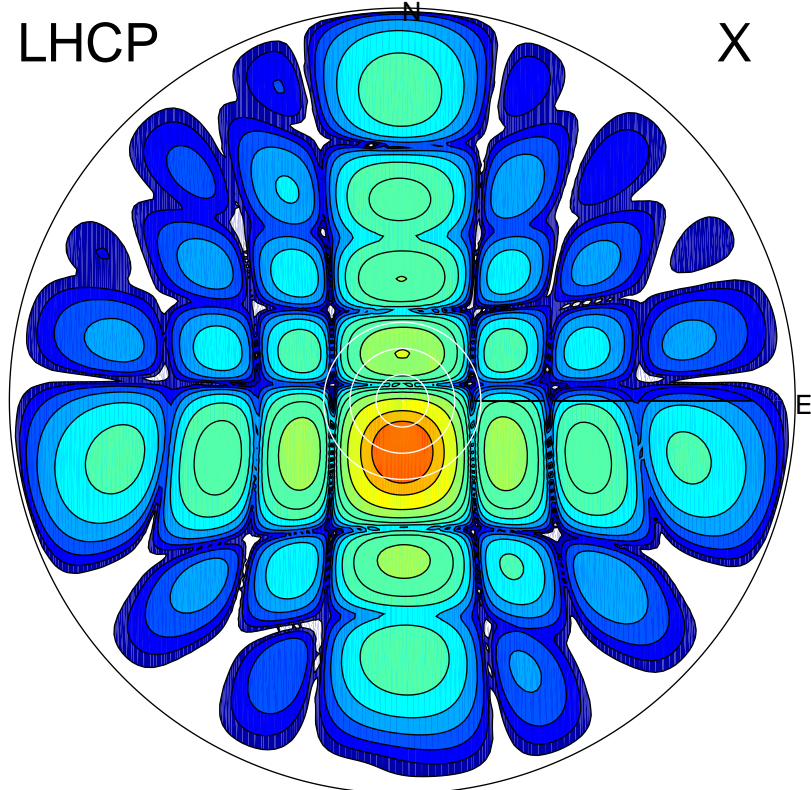


2017-07-31 01:44:57 A2 4.04000000 MHz 796.0 kW

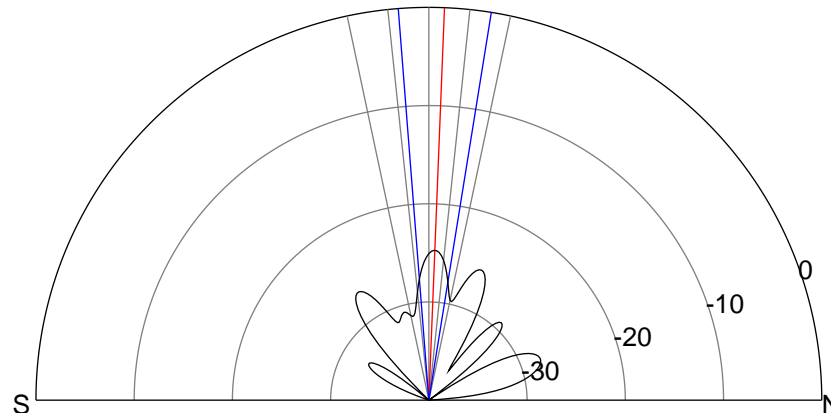
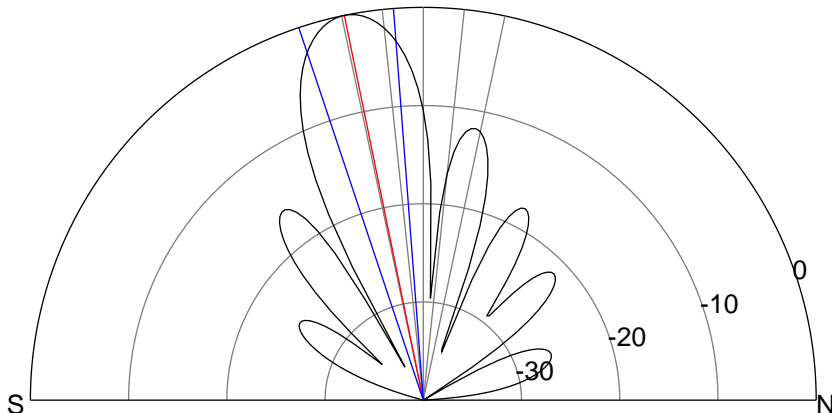
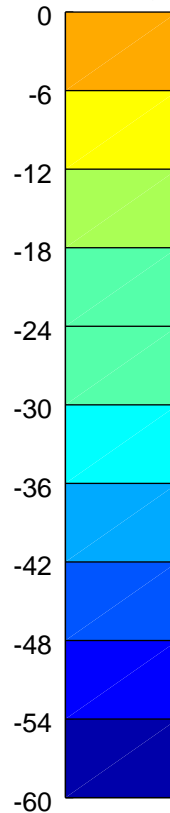
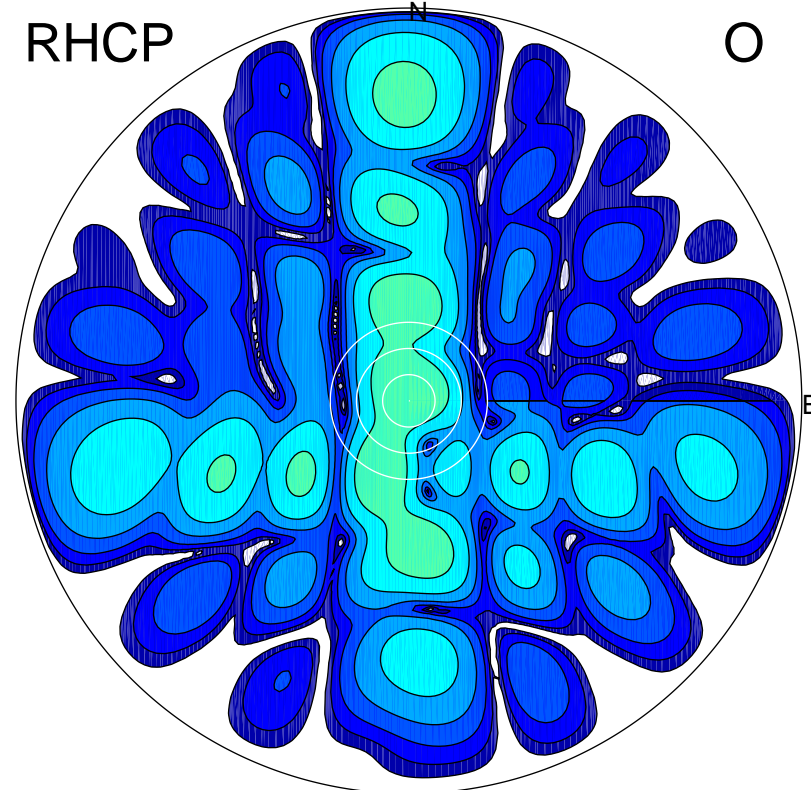
LHCP

X



RHCP

O



ERP 136.6 MW

Peak gain 22.3 dBi at Az 179 Zen 12
RHCP gain -9.3 dBi
N-S peak 22.4 dBi at Zen -11.6
N-S -3 dB beamwidth 14.1 deg.

ERP 0.5 MW

Peak gain -2.4 dBi at Az 5 Zen 2
LHCP gain 4.5 dBi
N-S peak -2.4 dBi at Zen 2.3
N-S -3 dB beamwidth 13.6 deg.