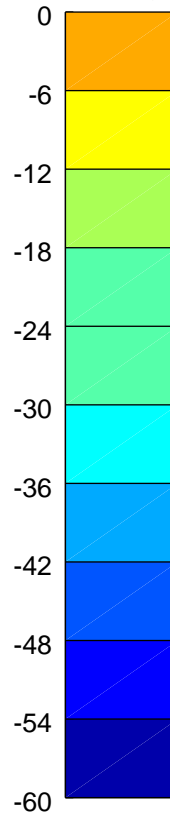
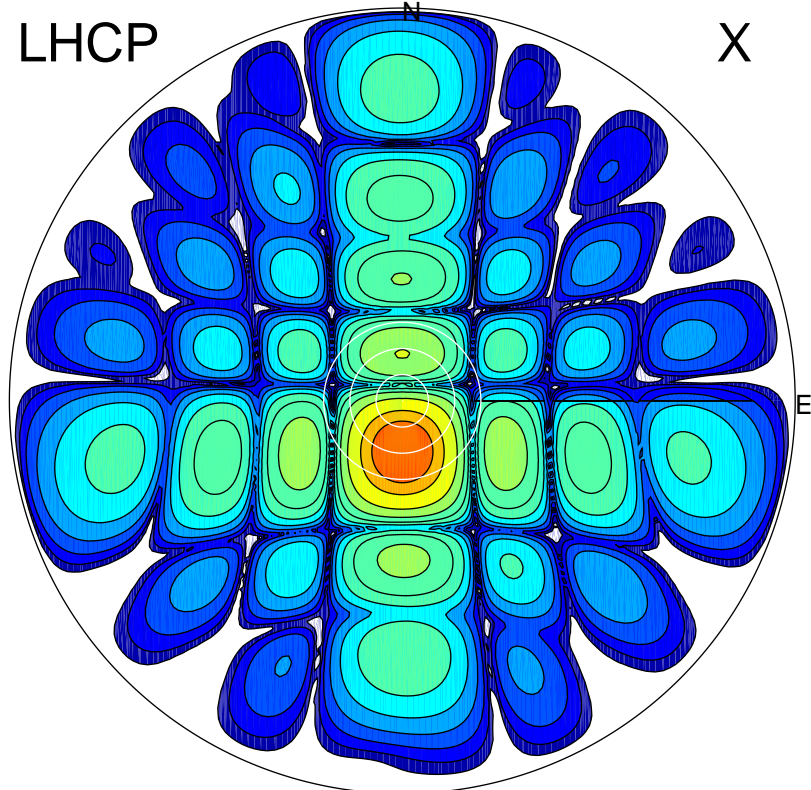


2017-07-31 01:42:57 A2 4.04000000 MHz 792.0 kW

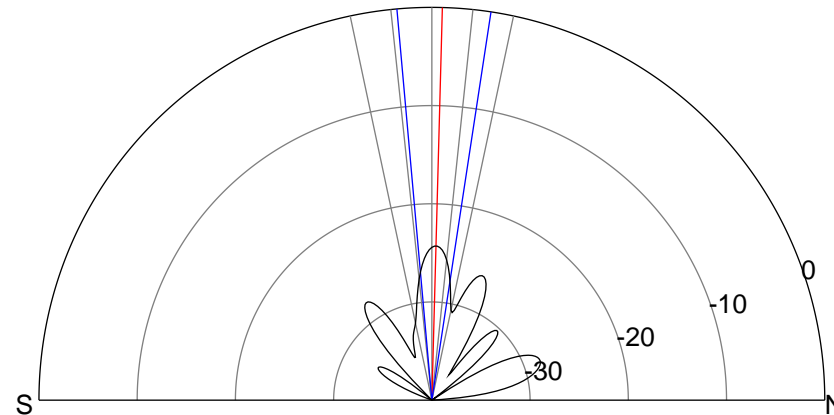
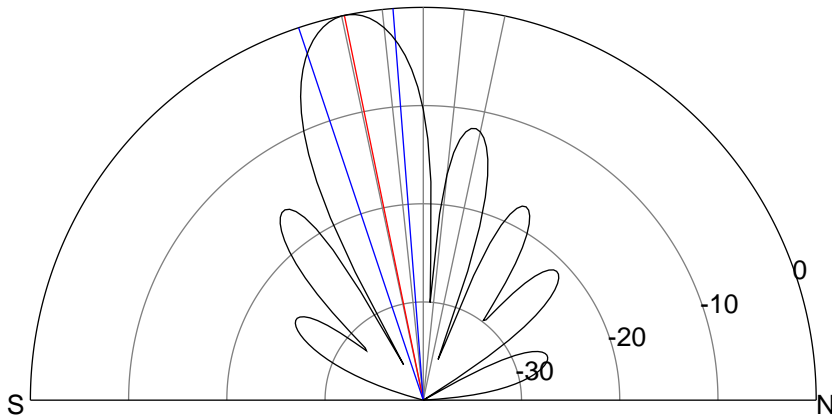
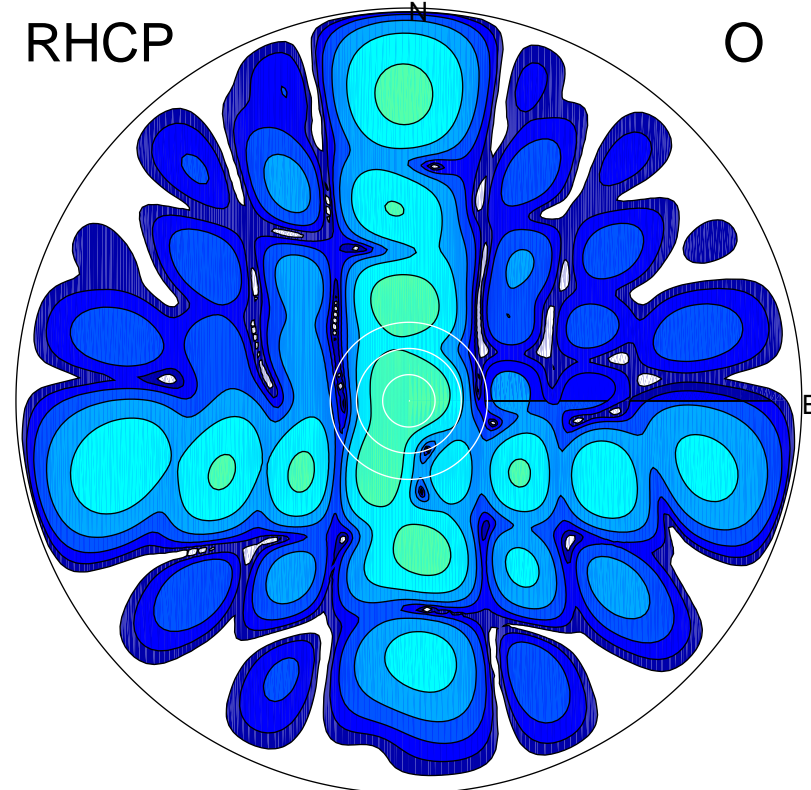
LHCP

X



RHCP

O



ERP 136.2 MW

Peak gain 22.4 dBi at Az 179 Zen 12
RHCP gain -10.1 dBi
N-S peak 22.4 dBi at Zen -11.6
N-S -3 dB beamwidth 14.1 deg.

ERP 0.5 MW

Peak gain -1.9 dBi at Az 8 Zen 2
LHCP gain 4.7 dBi
N-S peak -1.9 dBi at Zen 1.5
N-S -3 dB beamwidth 13.8 deg.