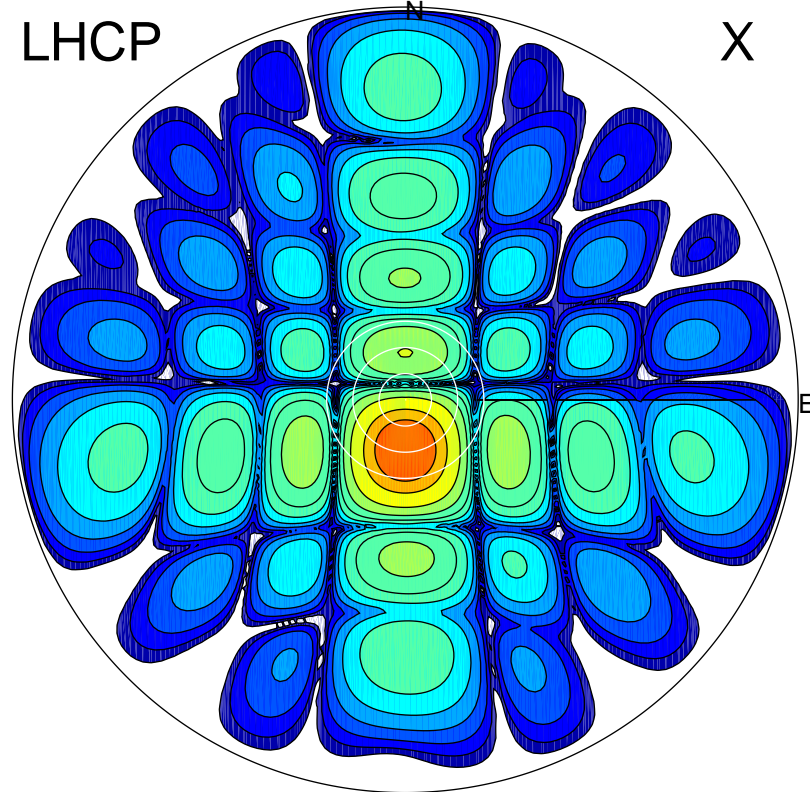


2017-07-31 01:39:57 A2 4.04000000 MHz 813.0 kW

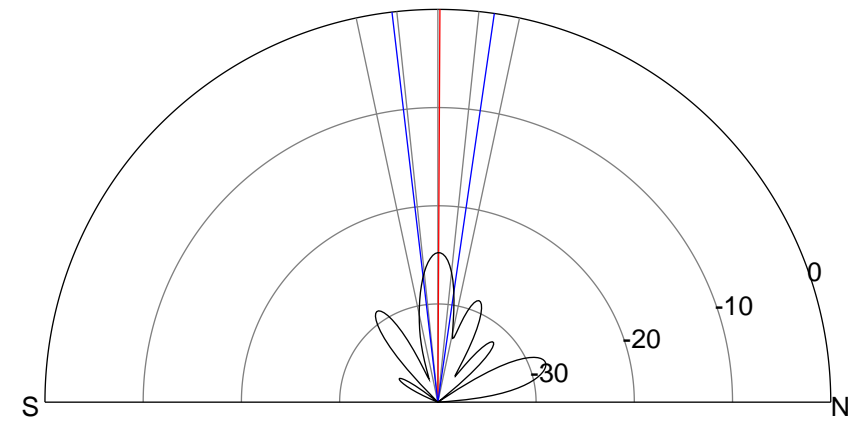
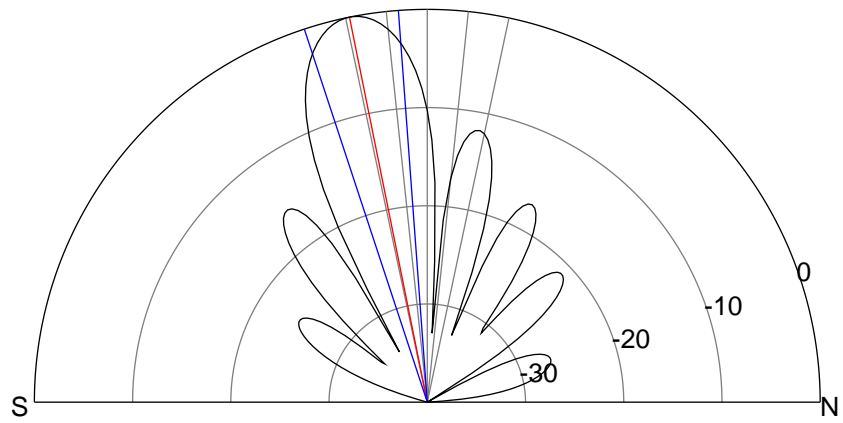
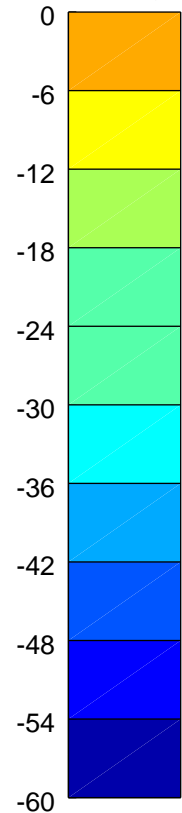
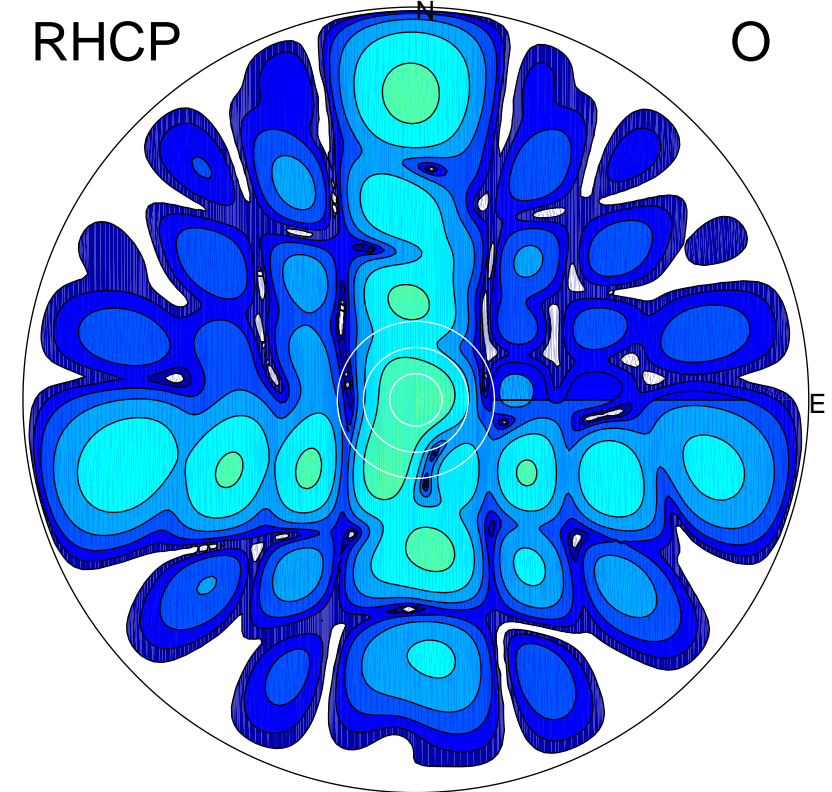
LHCP

X



RHCP

O



### ERP 140.4 MW

Peak gain 22.4 dBi at Az 179 Zen 11  
RHCP gain -8.1 dBi  
N-S peak 22.4 dBi at Zen -11.4  
N-S -3 dB beamwidth 14.0 deg.

### ERP 0.5 MW

Peak gain -2.4 dBi at Az 7 Zen 0  
LHCP gain 12.1 dBi  
N-S peak -2.4 dBi at Zen 0.3  
N-S -3 dB beamwidth 15.0 deg.