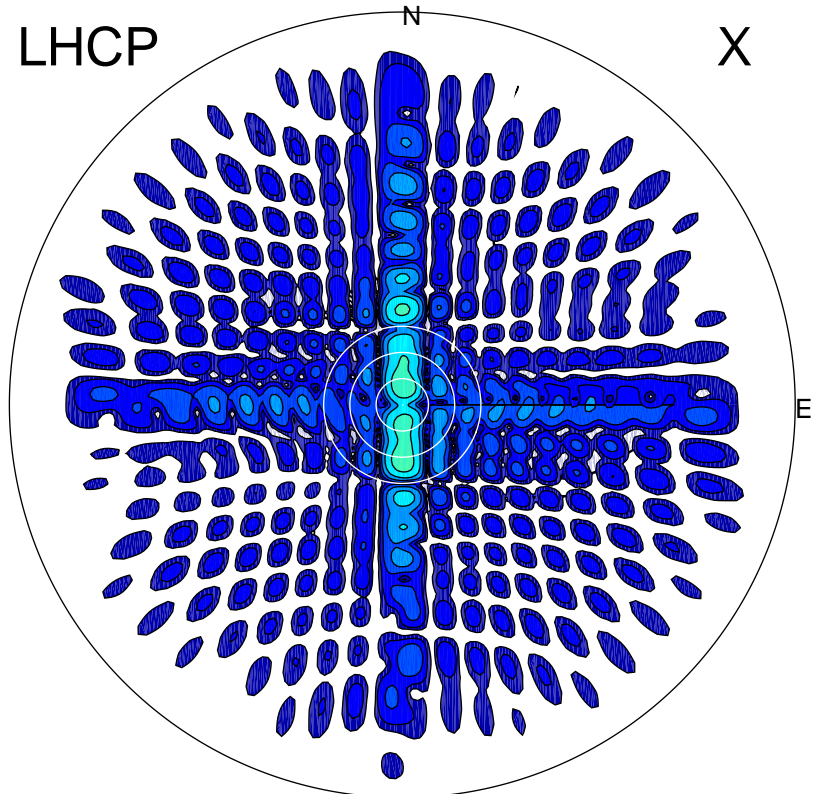


2017-07-12 15:01:41 A1 7.95300000 MHz 791.0 kW

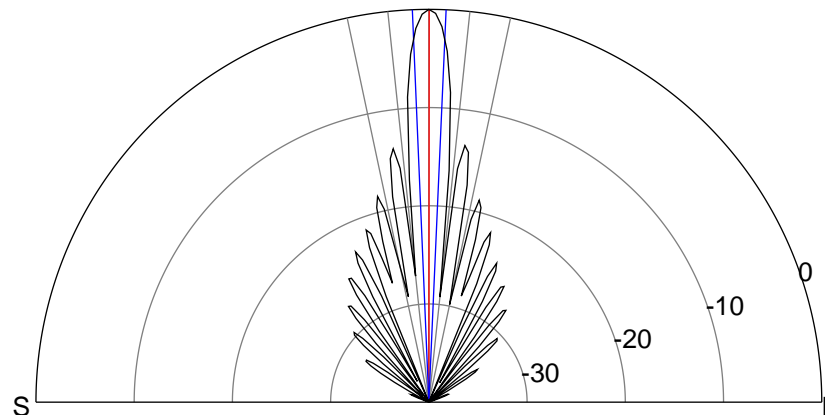
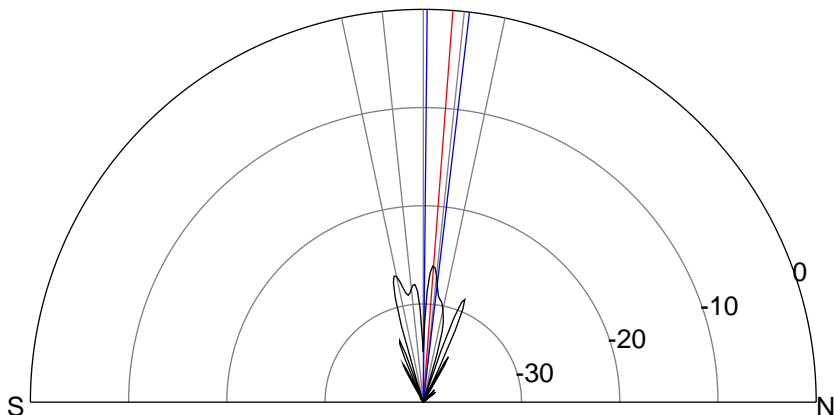
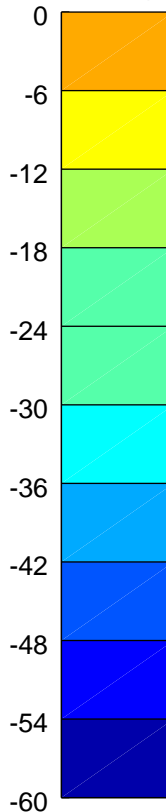
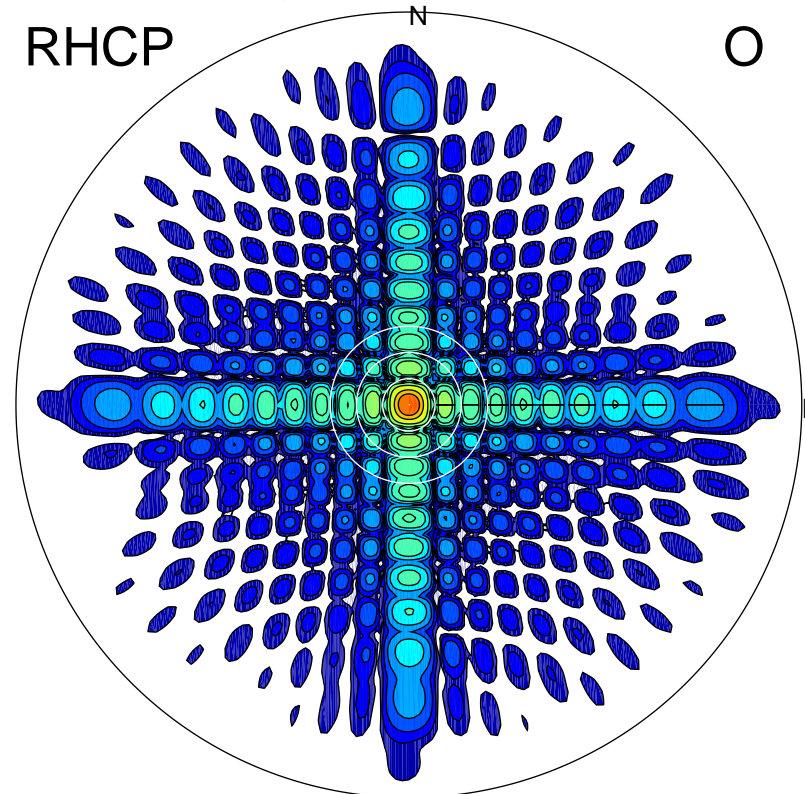
LHCP

X



RHCP

O



ERP 2.6 MW

Peak gain 5.1 dBi at Az 6 Zen 4
RHCP gain 22.7 dBi
N-S peak 5.0 dBi at Zen 4.3
N-S -3 dB beamwidth 6.2 deg.

ERP 1017.7 MW

Peak gain 31.1 dBi at Az 14 Zen 0
LHCP gain -3.8 dBi
N-S peak 31.1 dBi at Zen 0.1
N-S -3 dB beamwidth 4.9 deg.