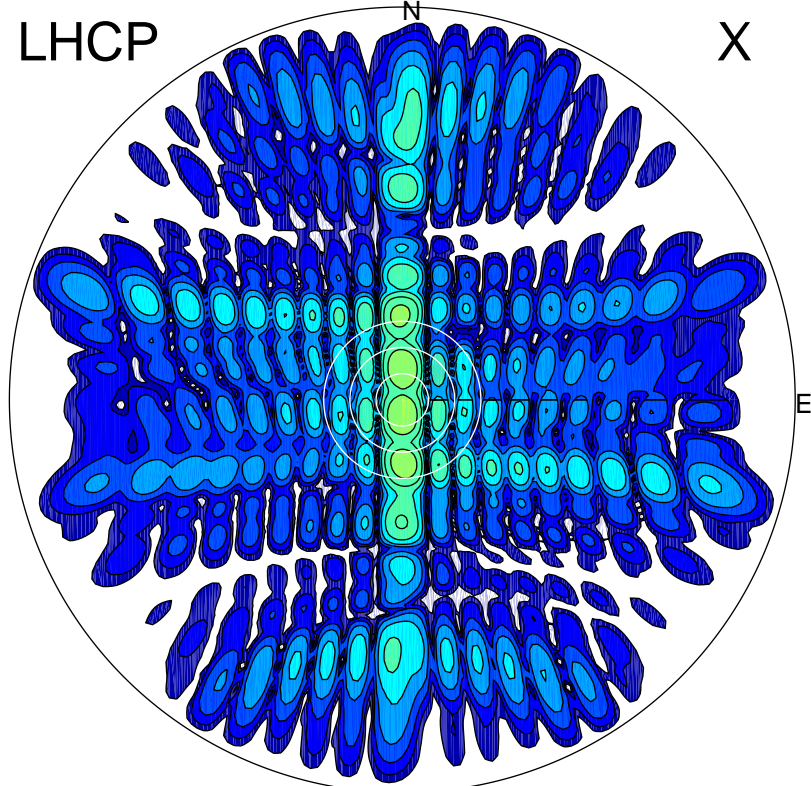


2017-07-10 20:26:02 A1 7.95300000 MHz 582.0 kW

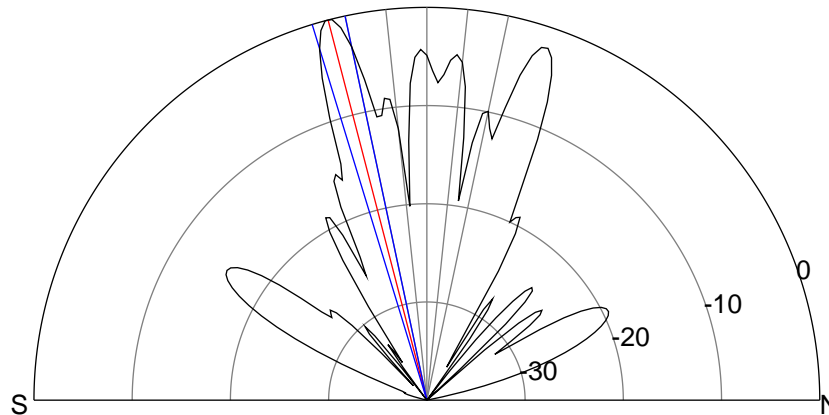
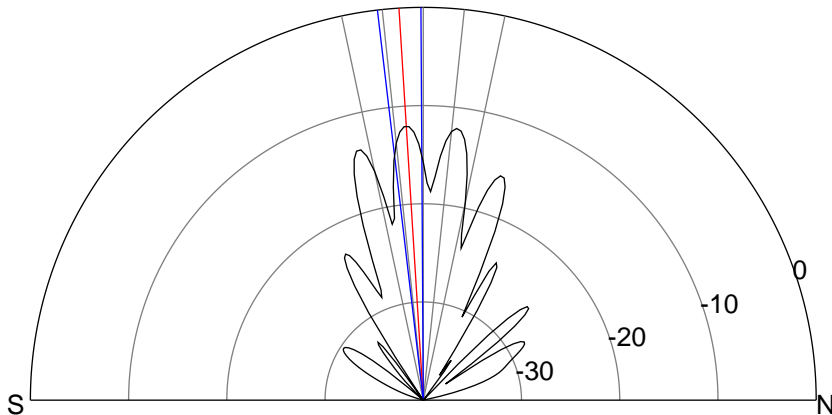
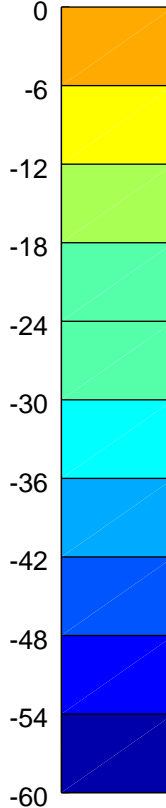
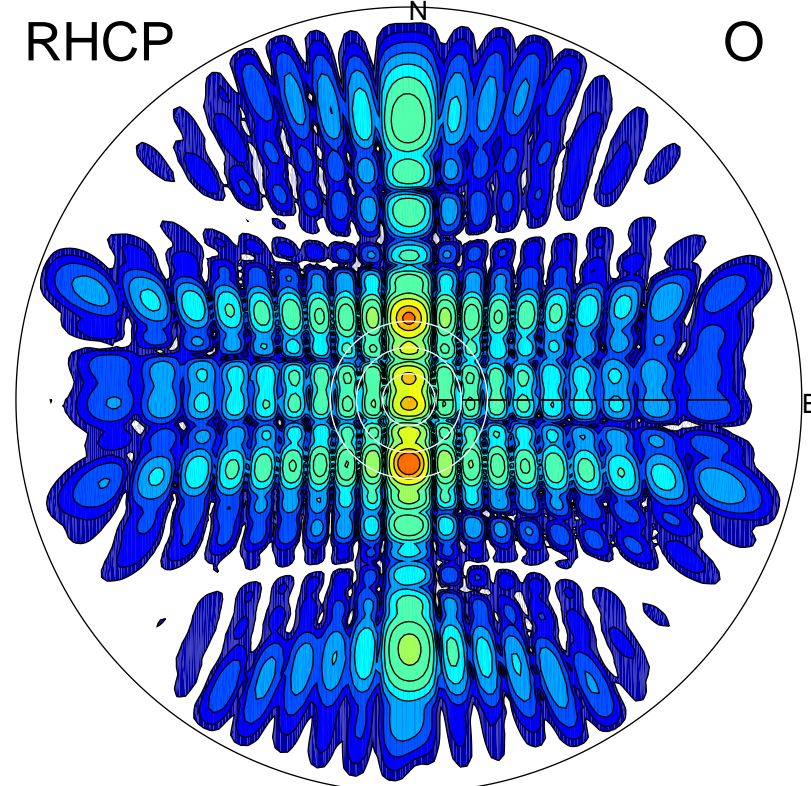
LHCP

X



RHCP

O



ERP 18.4 MW

Peak gain 15.0 dBi at Az 180 Zen 4
RHCP gain 13.5 dBi
N-S peak 15.1 dBi at Zen -3.6
N-S -3 dB beamwidth 6.4 deg.

ERP 297.7 MW

Peak gain 27.1 dBi at Az 180 Zen 15
LHCP gain 13.3 dBi
N-S peak 27.2 dBi at Zen -14.6
N-S -3 dB beamwidth 4.9 deg.