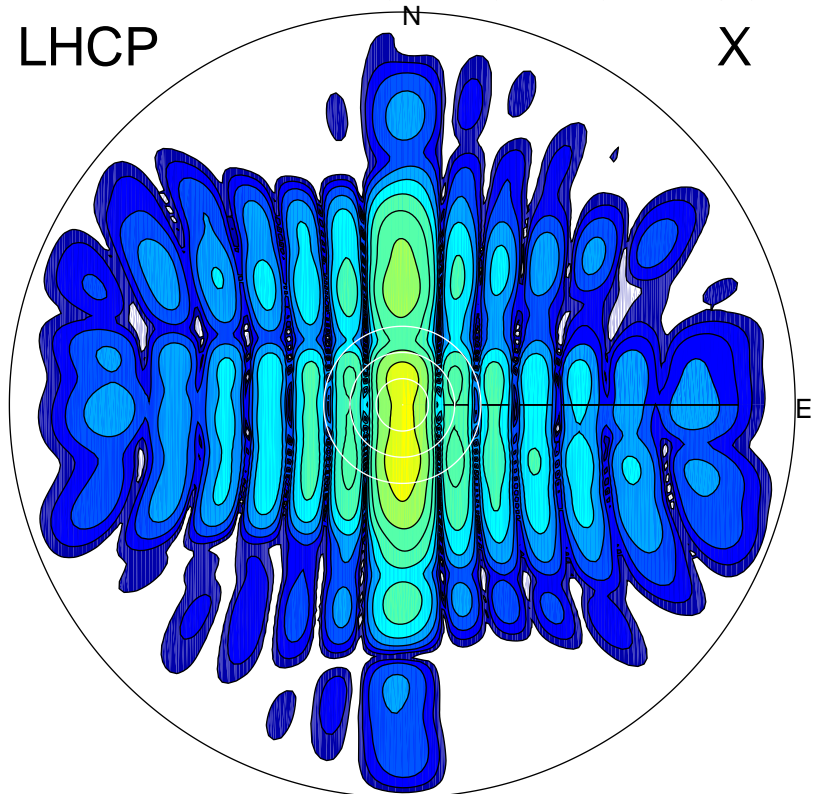


2017-07-10 14:50:49 A1 5.42300000 MHz 674.0 kW

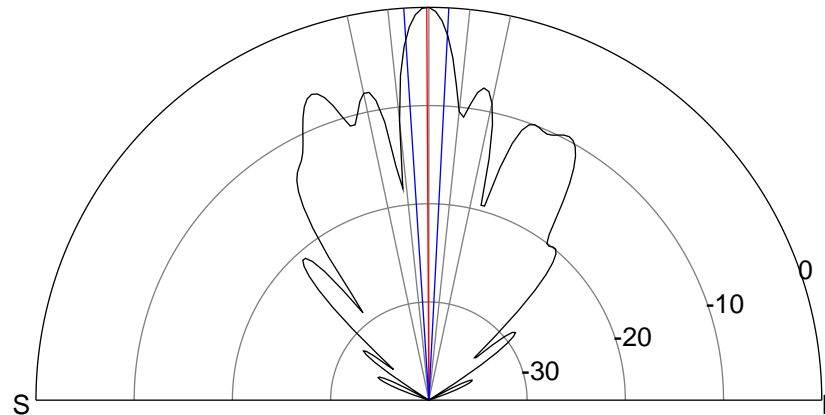
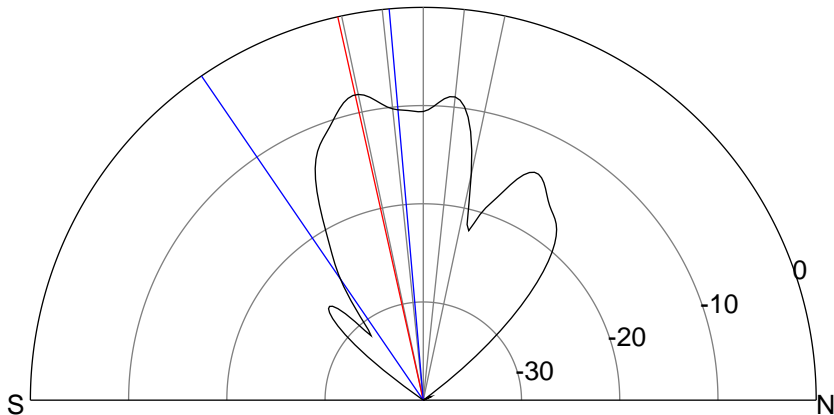
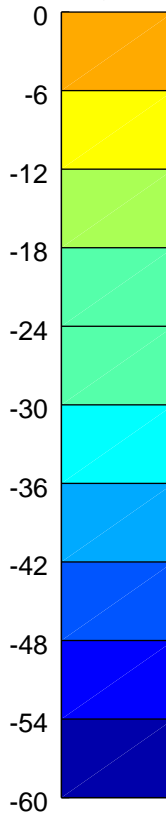
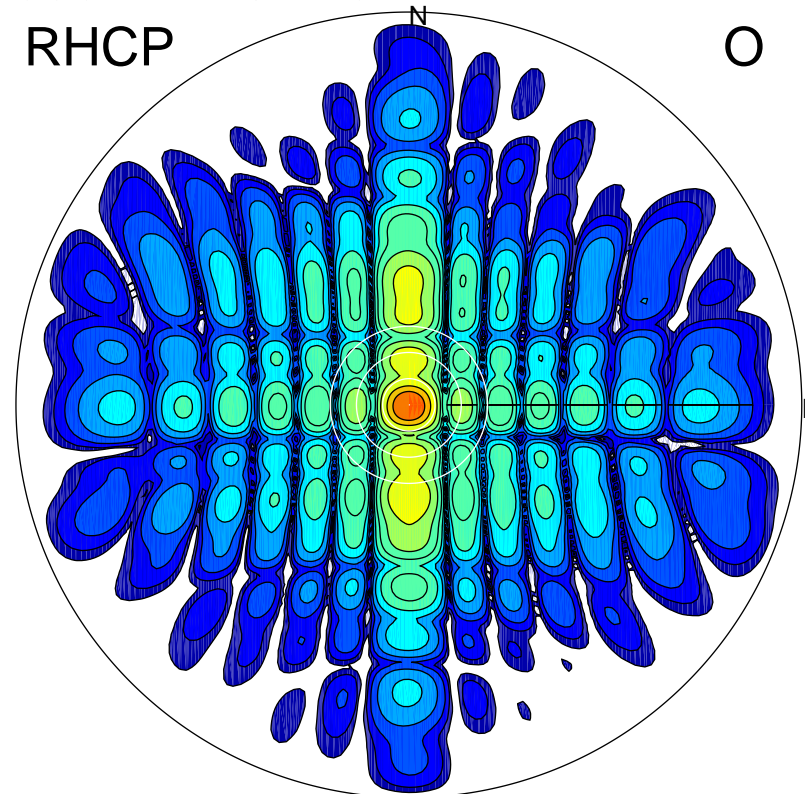
LHCP

X



RHCP

O



ERP 31.0 MW

Peak gain 16.6 dBi at Az 180 Zen 13
RHCP gain 16.0 dBi
N-S peak 16.6 dBi at Zen -12.6
N-S -3 dB beamwidth 29.4 deg.

ERP 203.1 MW

Peak gain 24.8 dBi at Az 23 Zen 0
LHCP gain 14.2 dBi
N-S peak 24.8 dBi at Zen -0.3
N-S -3 dB beamwidth 6.6 deg.