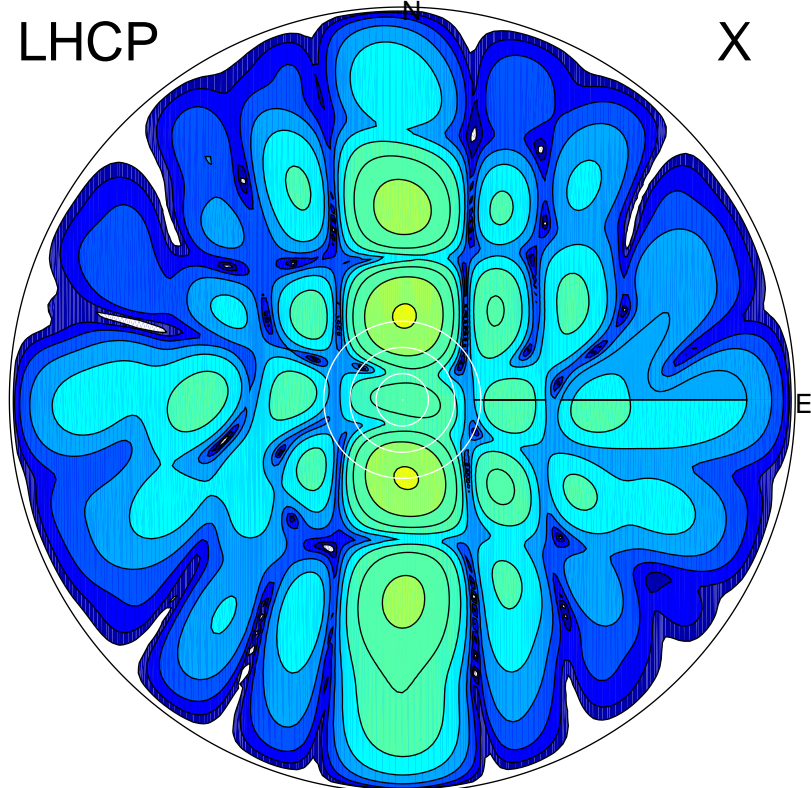


2017-06-28 11:20:02 A2 4.54400000 MHz 671.0 kW

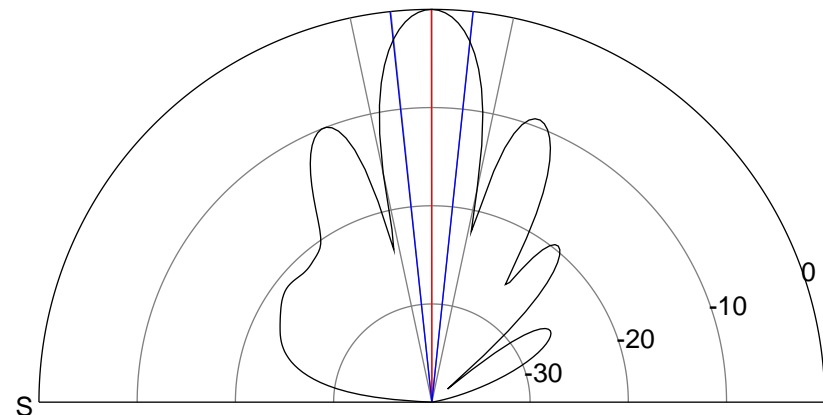
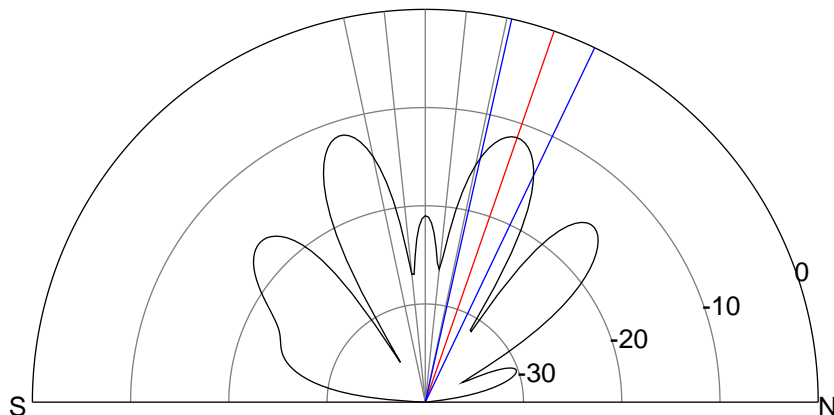
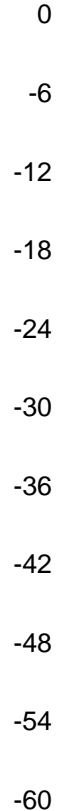
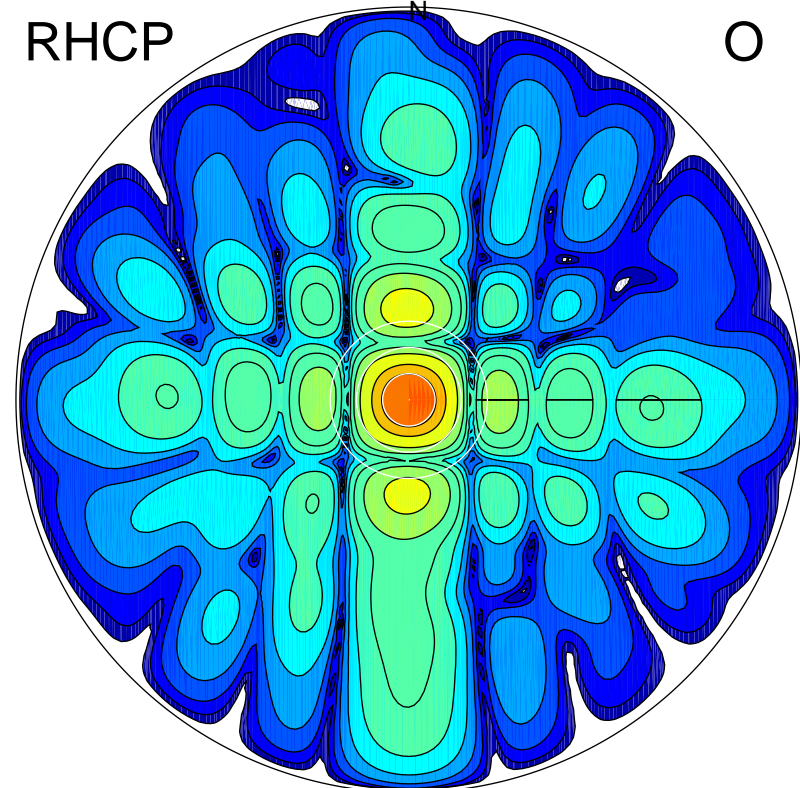
LHCP

X



RHCP

O



### ERP 8.0 MW

Peak gain 10.8 dBi at Az 177 Zen 18  
RHCP gain 10.4 dBi  
N-S peak 10.7 dBi at Zen 19.2  
N-S -3 dB beamwidth 12.8 deg.

### ERP 112.2 MW

Peak gain 22.2 dBi at Az 81 Zen 0  
LHCP gain 1.2 dBi  
N-S peak 22.2 dBi at Zen -0.1  
N-S -3 dB beamwidth 12.1 deg.