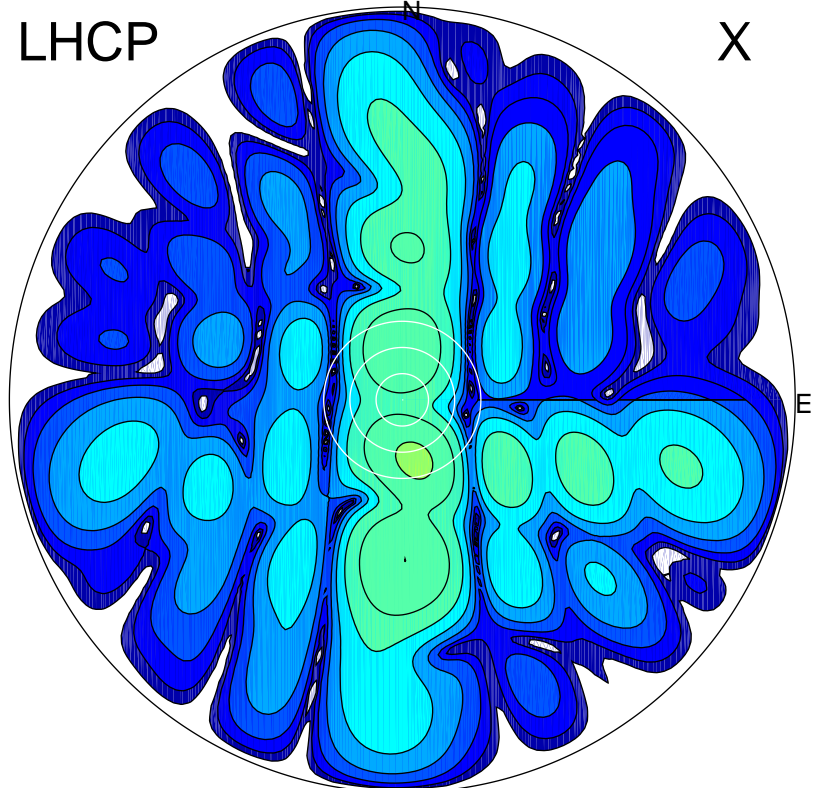


2017-03-09 13:23:00 A2 4.13000000 MHz 760.0 kW

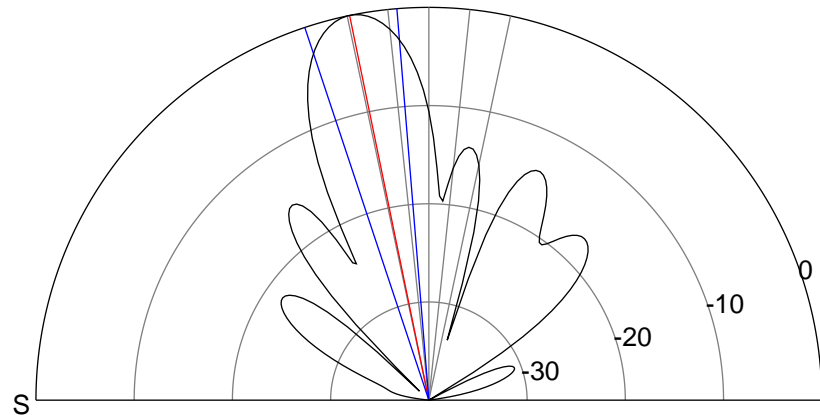
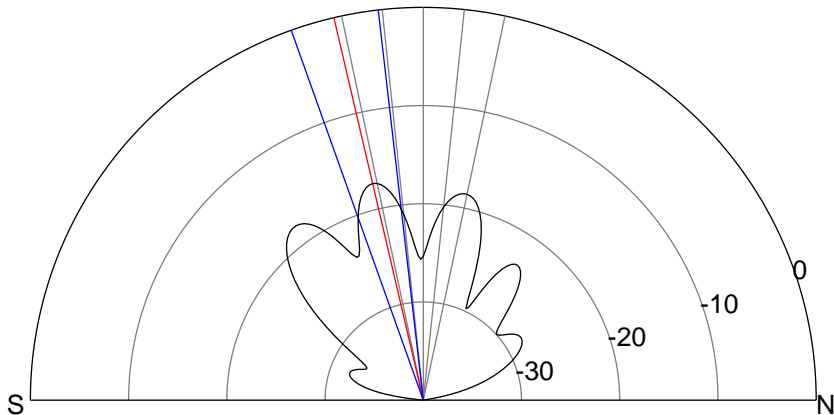
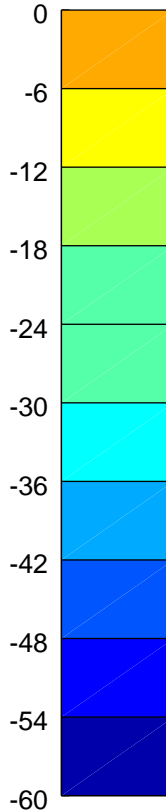
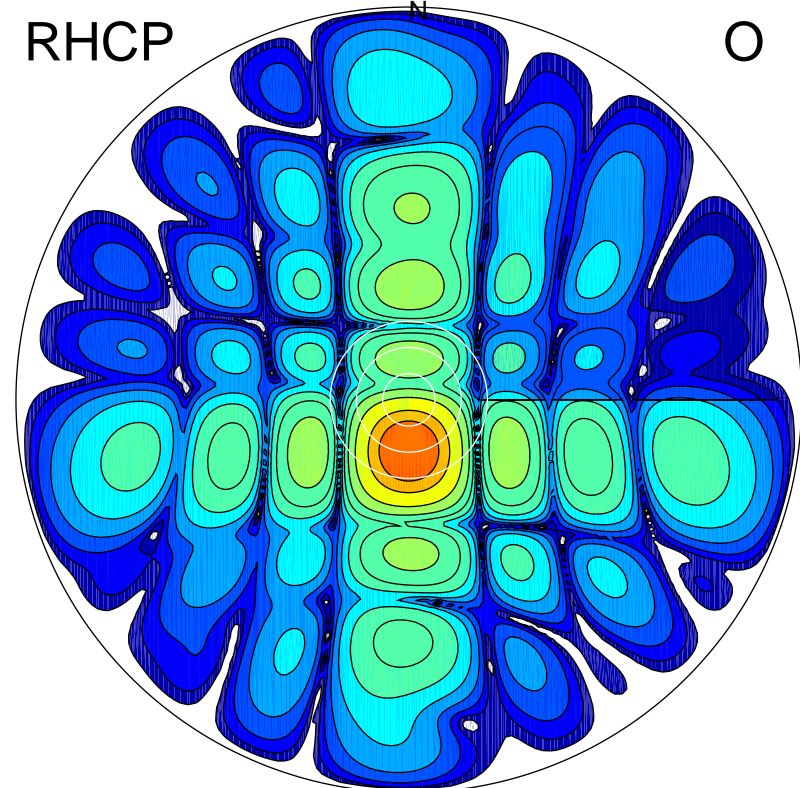
LHCP

X



RHCP

O



ERP 2.7 MW

Peak gain 5.4 dBi at Az 169 Zen 14
RHCP gain 21.6 dBi
N-S peak 4.9 dBi at Zen -13.2
N-S -3 dB beamwidth 13.1 deg.

ERP 128.2 MW

Peak gain 22.3 dBi at Az 180 Zen 12
LHCP gain 4.8 dBi
N-S peak 22.3 dBi at Zen -11.6
N-S -3 dB beamwidth 13.7 deg.