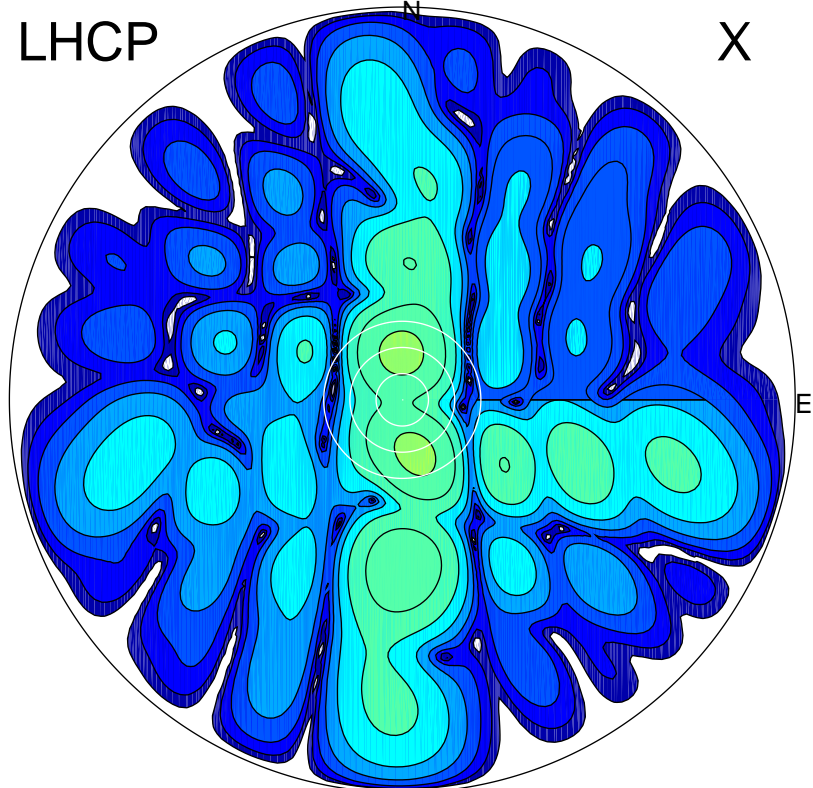


2017-03-09 13:19:00 A2 4.21000000 MHz 761.0 kW

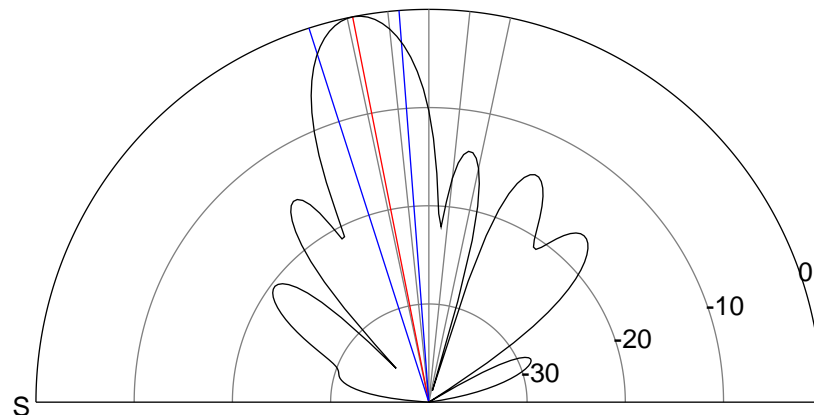
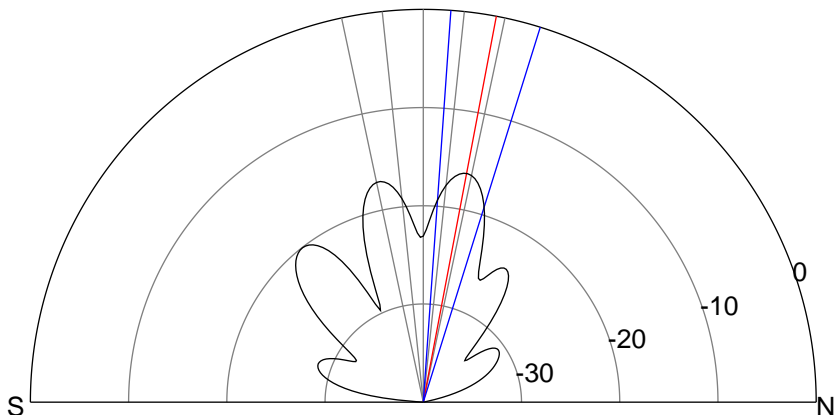
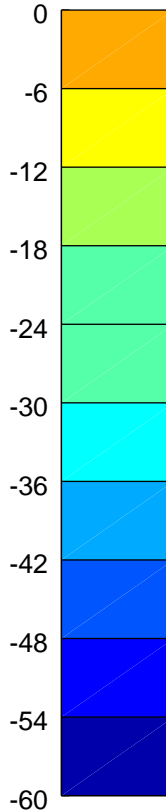
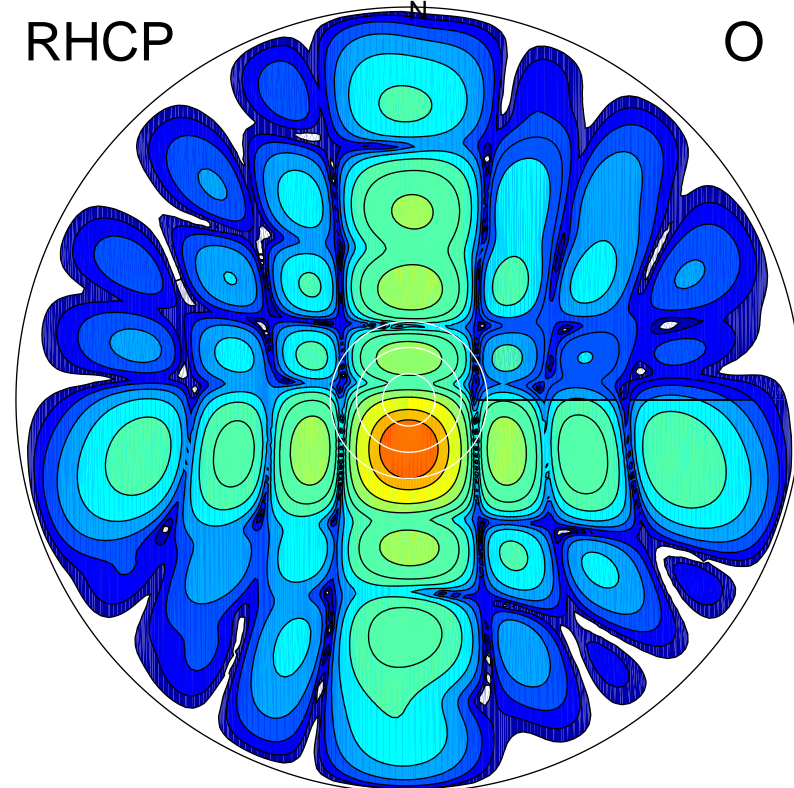
LHCP

X



RHCP

O



ERP 3.1 MW

Peak gain 6.1 dBi at Az 359 Zen 11
RHCP gain 7.7 dBi
N-S peak 6.1 dBi at Zen 10.7
N-S -3 dB beamwidth 13.3 deg.

ERP 133.4 MW

Peak gain 22.4 dBi at Az 181 Zen 11
LHCP gain 5.3 dBi
N-S peak 22.4 dBi at Zen -11.2
N-S -3 dB beamwidth 13.4 deg.