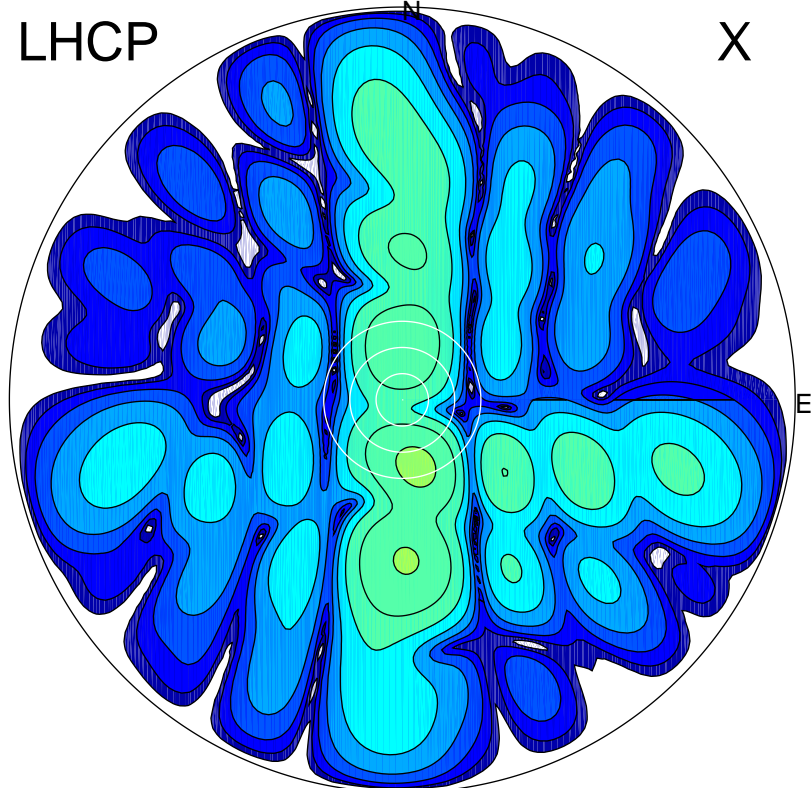


2017-03-09 12:59:00 A2 4.17000000 MHz 771.0 kW

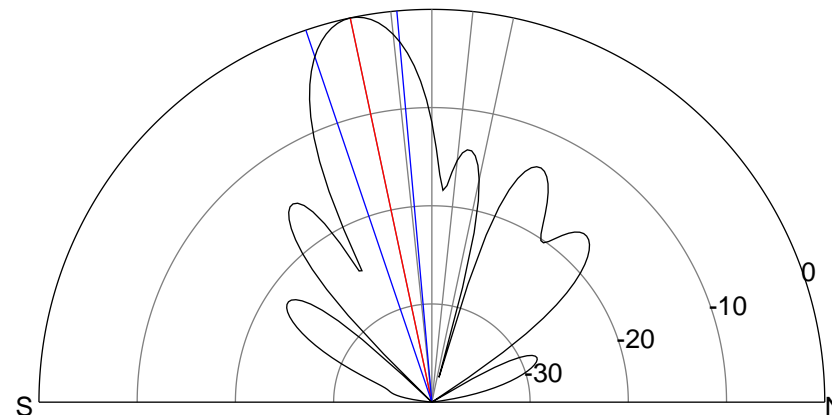
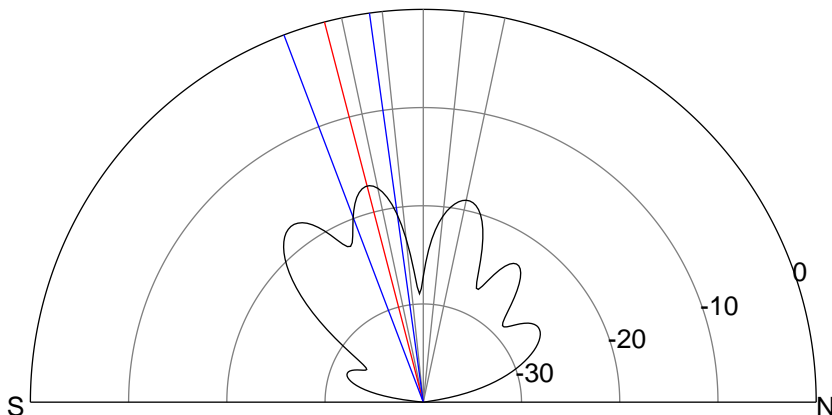
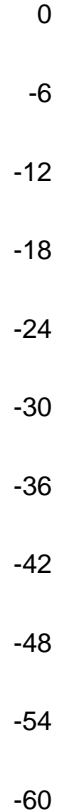
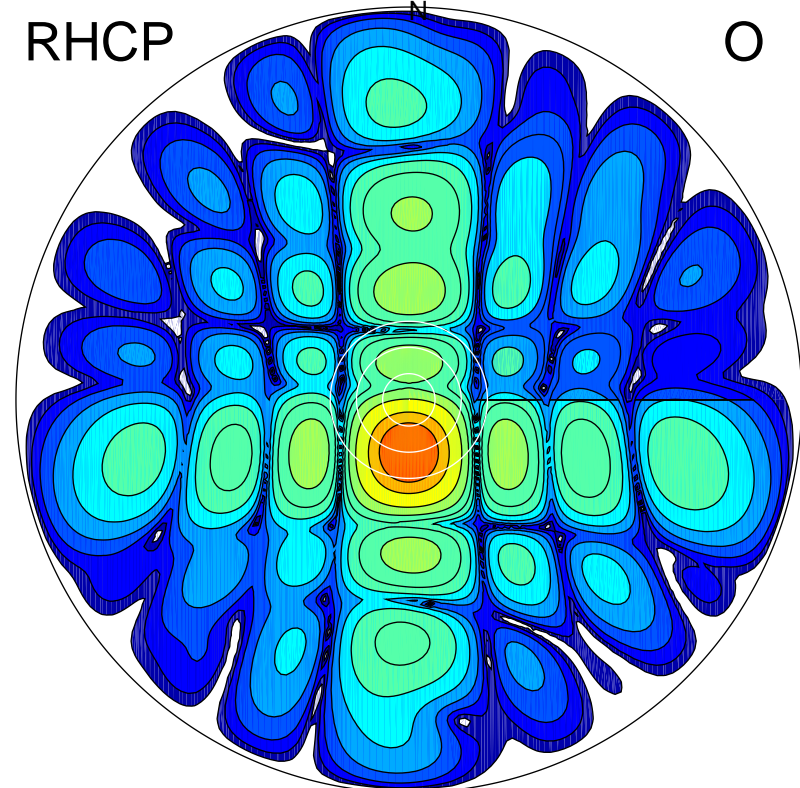
LHCP

X



RHCP

O



ERP 2.9 MW

Peak gain 5.8 dBi at Az 168 Zen 16
RHCP gain 20.8 dBi
N-S peak 5.1 dBi at Zen -14.6
N-S -3 dB beamwidth 12.9 deg.

ERP 131.7 MW

Peak gain 22.3 dBi at Az 180 Zen 12
LHCP gain 4.6 dBi
N-S peak 22.3 dBi at Zen -12.0
N-S -3 dB beamwidth 13.6 deg.