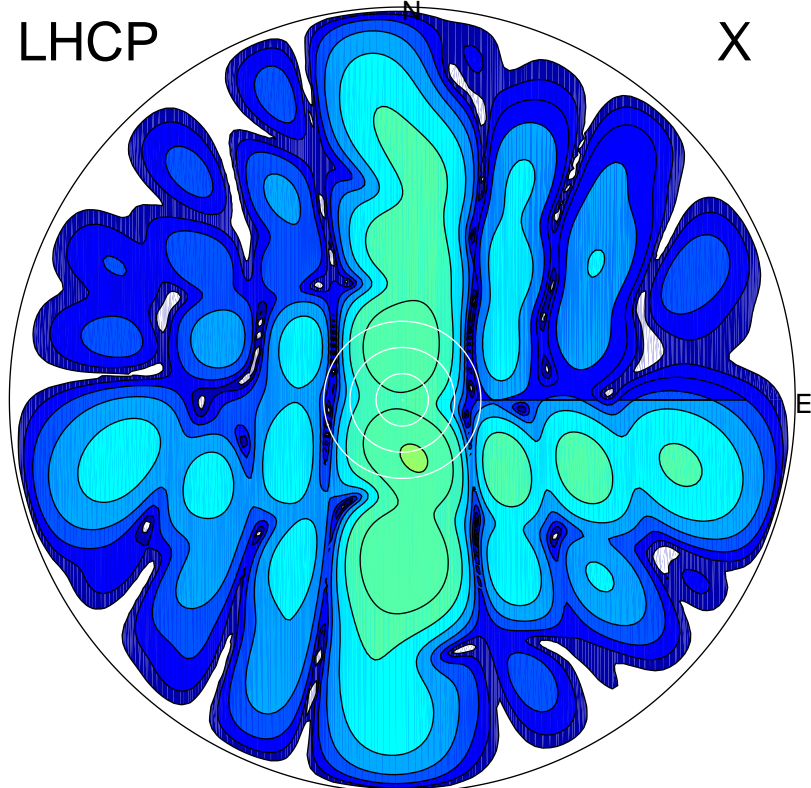


2017-03-09 11:19:00 A2 4.13000000 MHz 785.0 kW

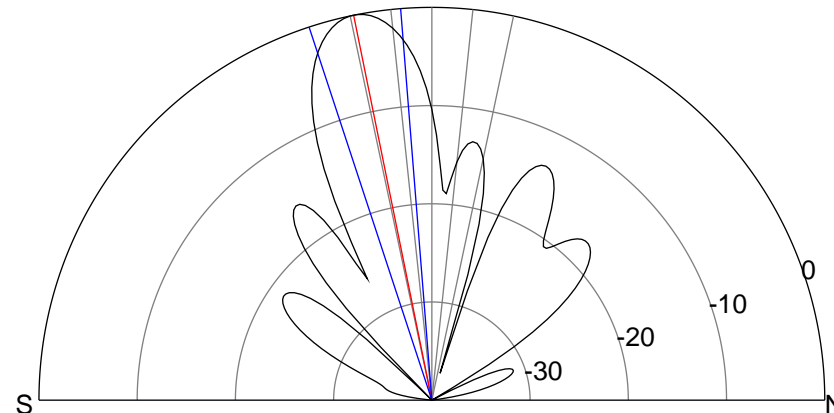
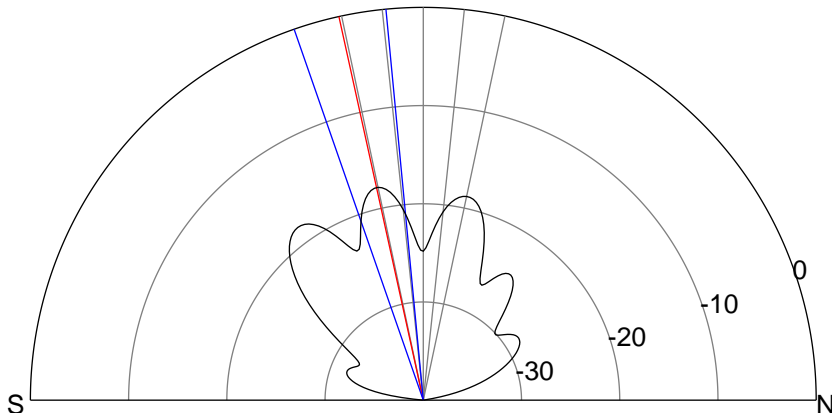
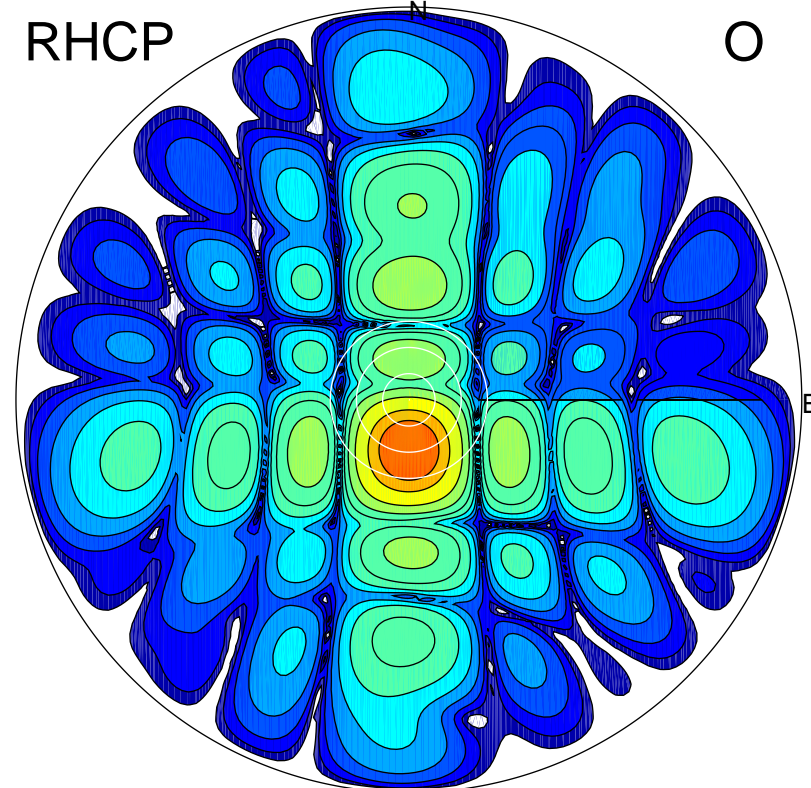
LHCP

X



RHCP

O



ERP 2.4 MW

Peak gain 4.9 dBi at Az 167 Zen 14
RHCP gain 21.4 dBi
N-S peak 4.4 dBi at Zen -12.4
N-S -3 dB beamwidth 13.7 deg.

ERP 132.4 MW

Peak gain 22.3 dBi at Az 181 Zen 11
LHCP gain 4.3 dBi
N-S peak 22.3 dBi at Zen -11.5
N-S -3 dB beamwidth 13.7 deg.