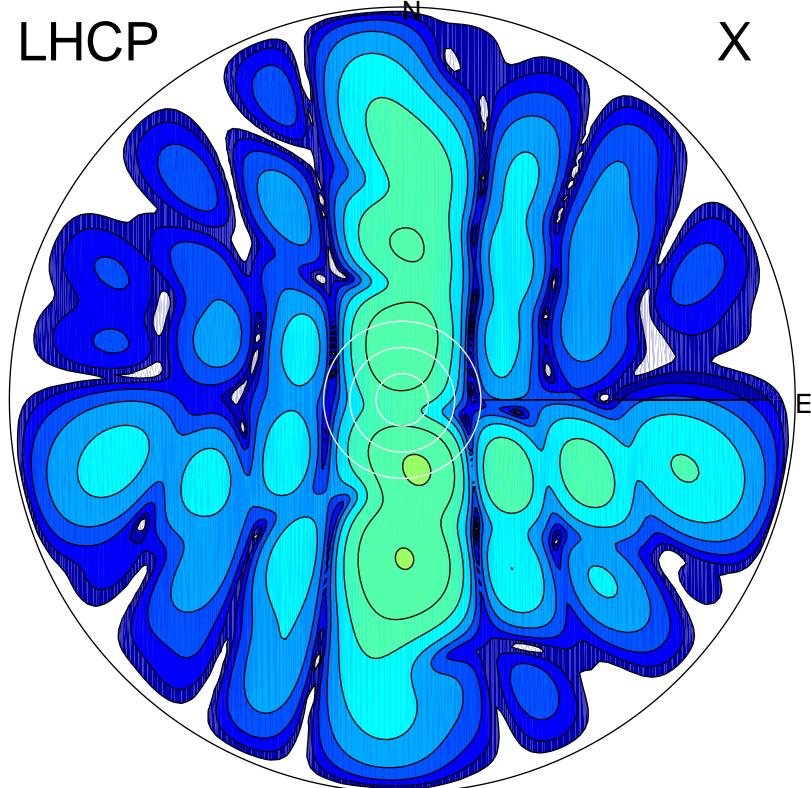


2017-03-09 11:15:00 A2 4.09000000 MHz 784.0 kW

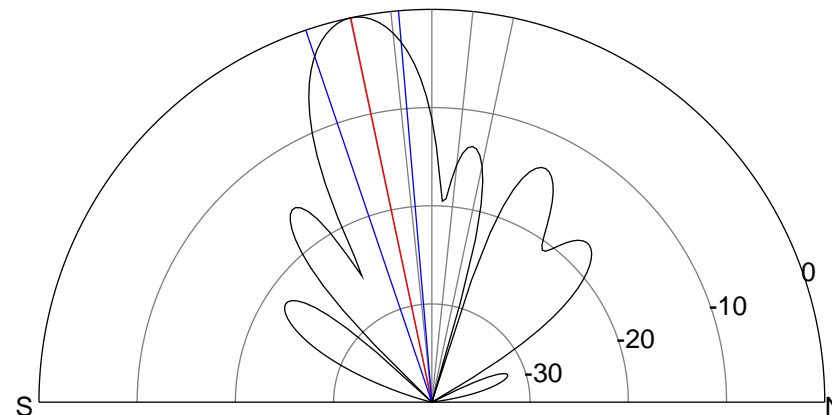
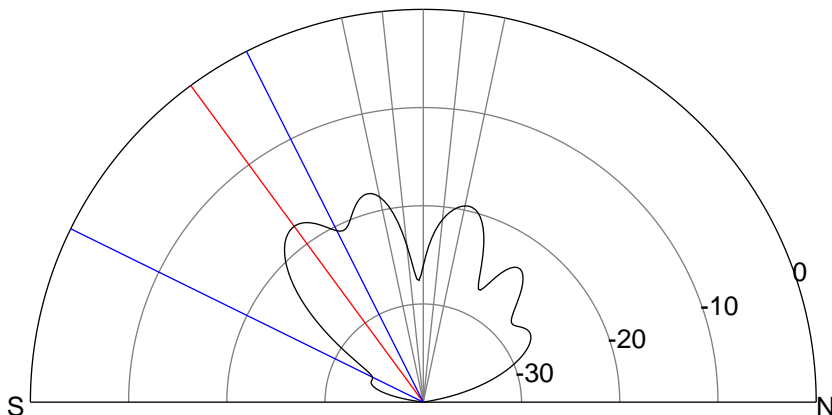
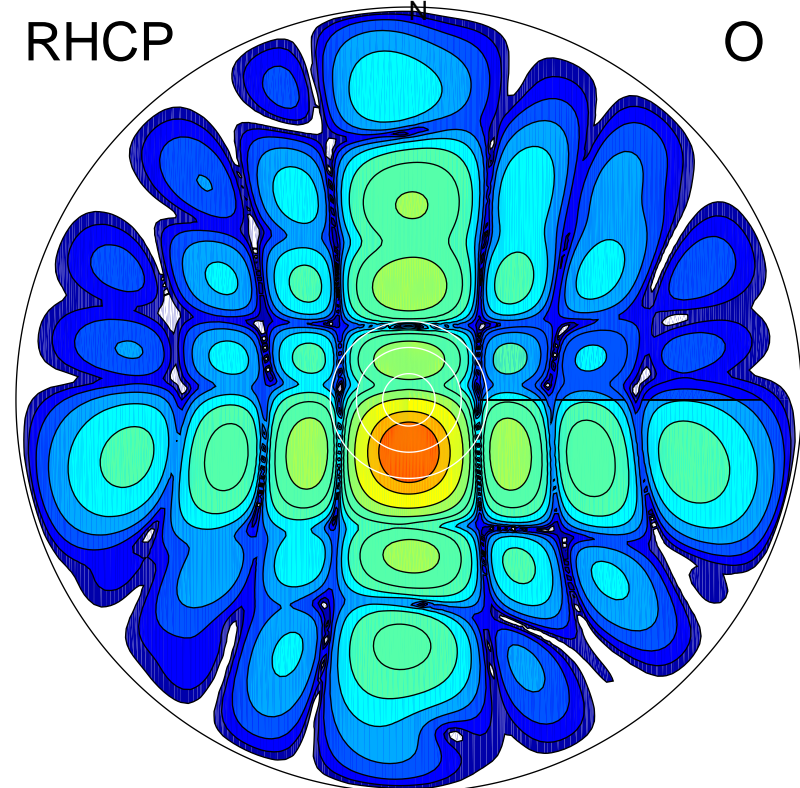
LHCP

X



RHCP

O



ERP 2.4 MW

Peak gain 4.9 dBi at Az 168 Zen 16
RHCP gain 20.7 dBi
N-S peak 4.4 dBi at Zen -36.3
N-S -3 dB beamwidth 37.1 deg.

ERP 130.0 MW

Peak gain 22.2 dBi at Az 181 Zen 12
LHCP gain 3.5 dBi
N-S peak 22.2 dBi at Zen -11.9
N-S -3 dB beamwidth 13.8 deg.