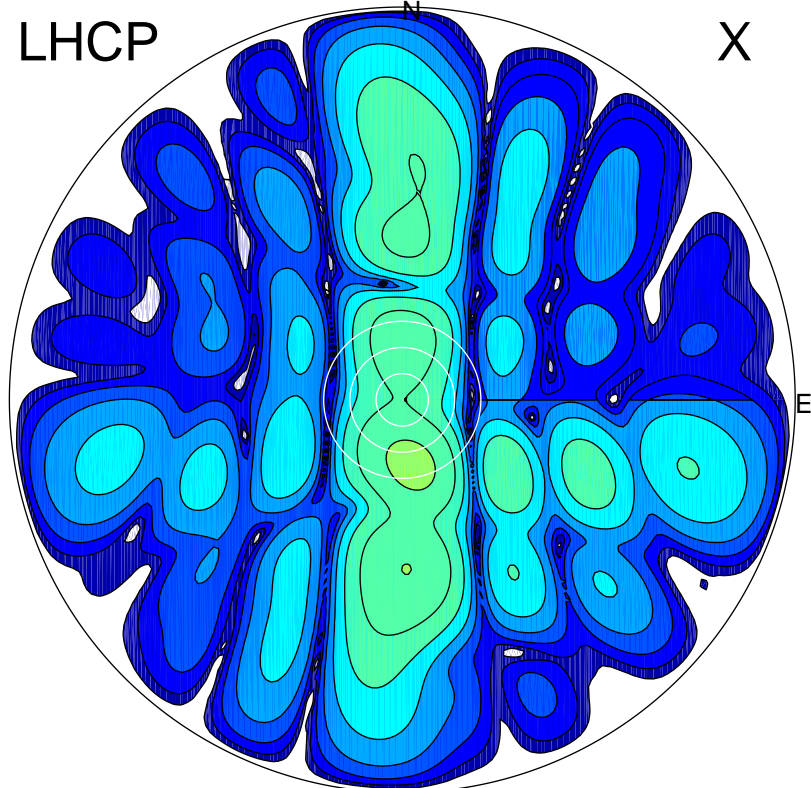


2017-03-09 11:11:00 A2 4.05000000 MHz 779.0 kW

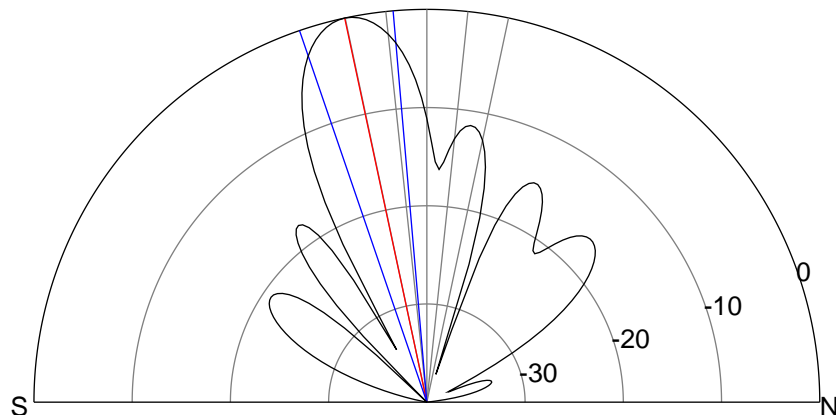
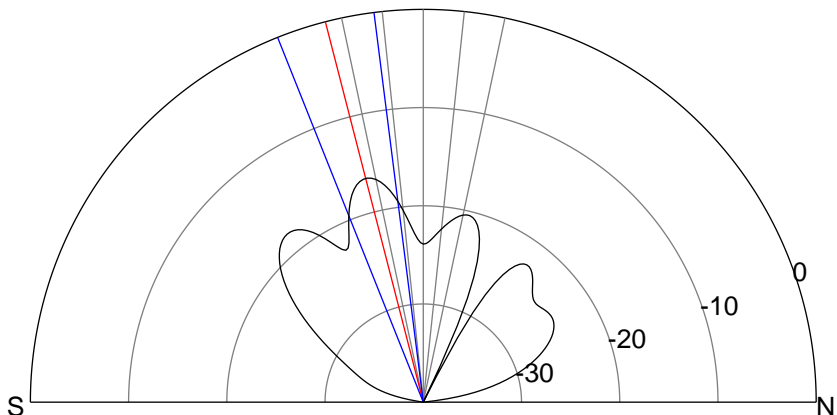
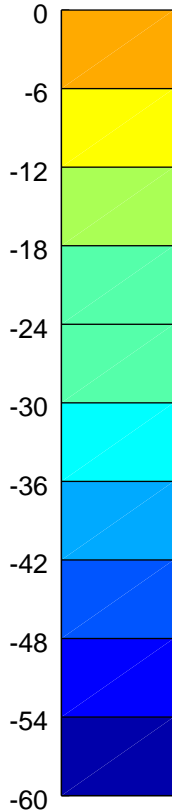
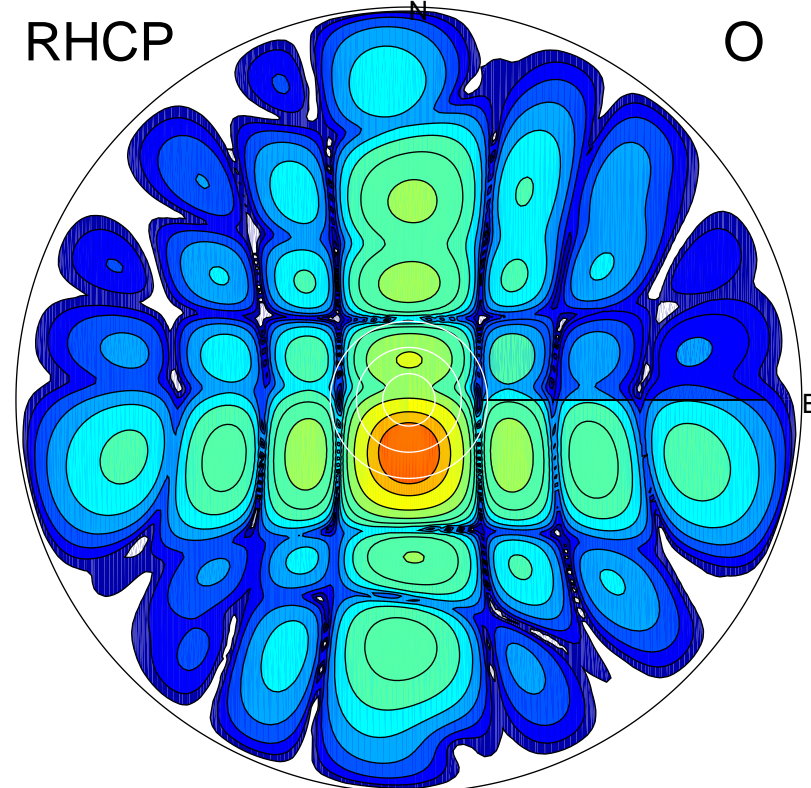
LHCP

X



RHCP

O



### ERP 3.0 MW

Peak gain 5.8 dBi at Az 171 Zen 15  
RHCP gain 21.3 dBi  
N-S peak 5.6 dBi at Zen -14.4  
N-S -3 dB beamwidth 14.6 deg.

### ERP 124.7 MW

Peak gain 22.0 dBi at Az 180 Zen 12  
LHCP gain 5.2 dBi  
N-S peak 22.0 dBi at Zen -12.1  
N-S -3 dB beamwidth 14.0 deg.