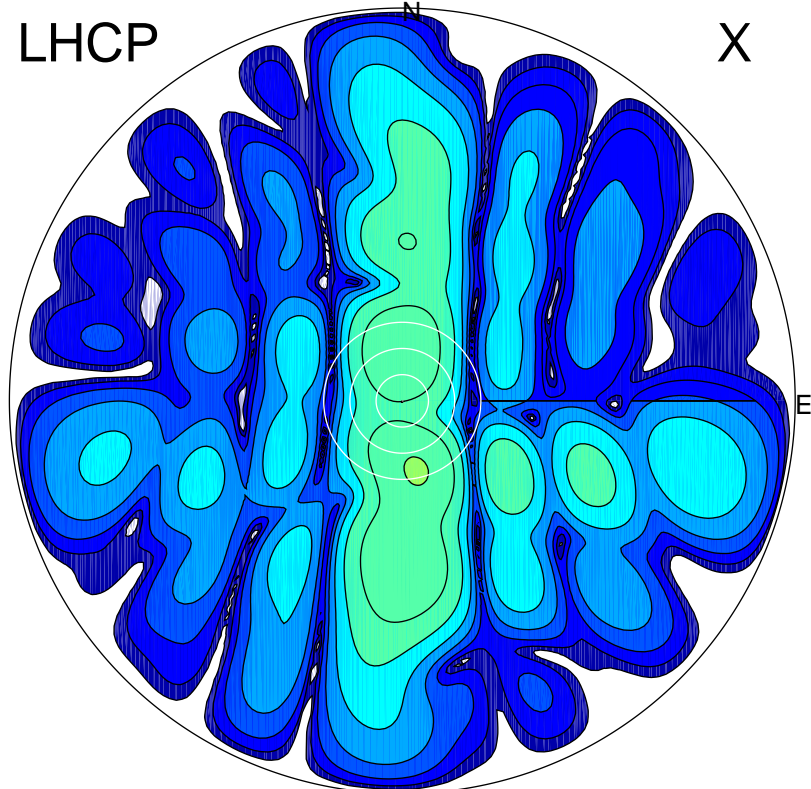


2017-03-09 11:07:00 A2 4.01000000 MHz 773.0 kW

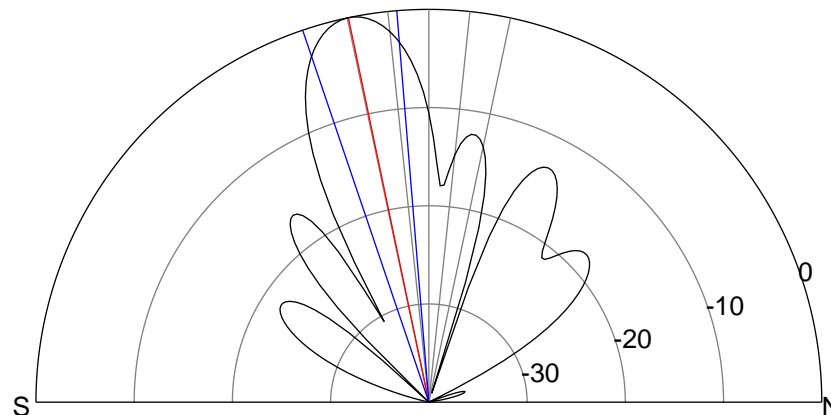
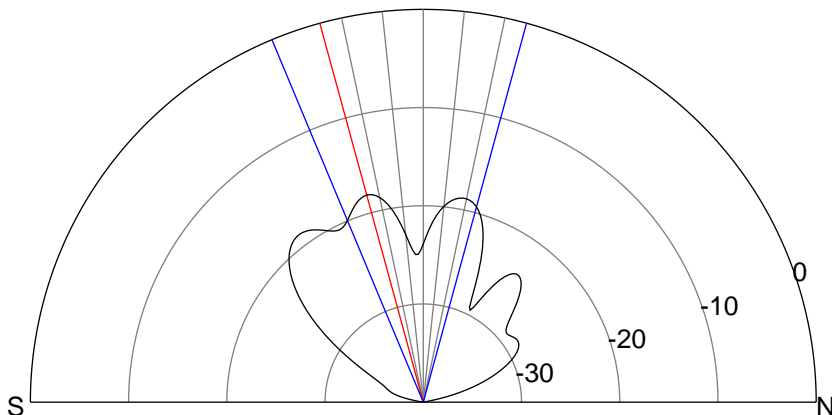
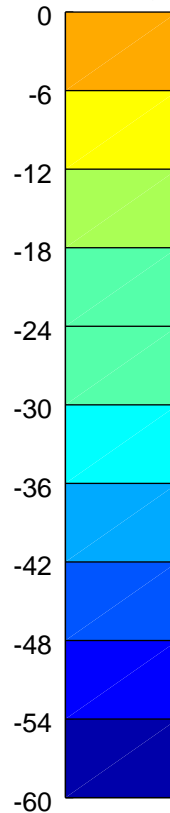
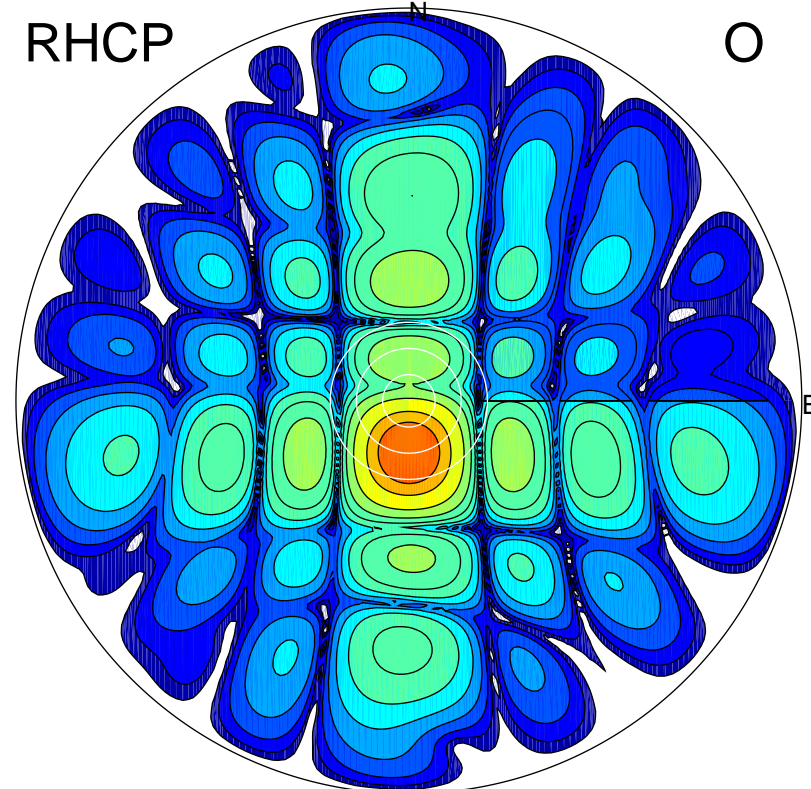
LHCP

X



RHCP

O



ERP 2.2 MW

Peak gain 4.6 dBi at Az 169 Zen 16
RHCP gain 20.7 dBi
N-S peak 3.9 dBi at Zen -15.3
N-S -3 dB beamwidth 37.9 deg.

ERP 123.6 MW

Peak gain 22.0 dBi at Az 181 Zen 12
LHCP gain 3.3 dBi
N-S peak 22.0 dBi at Zen -11.8
N-S -3 dB beamwidth 14.1 deg.