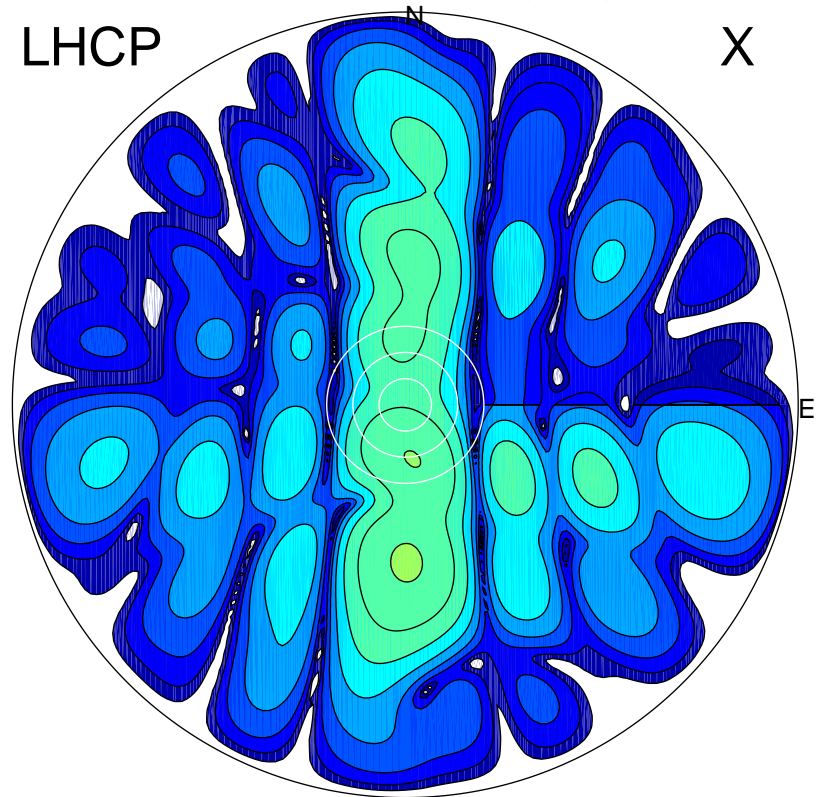


2017-03-09 11:03:00 A2 3.97000000 MHz 780.0 kW

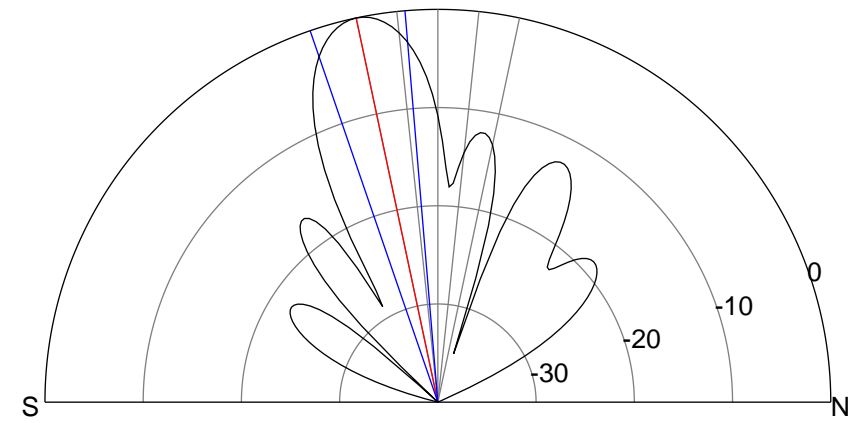
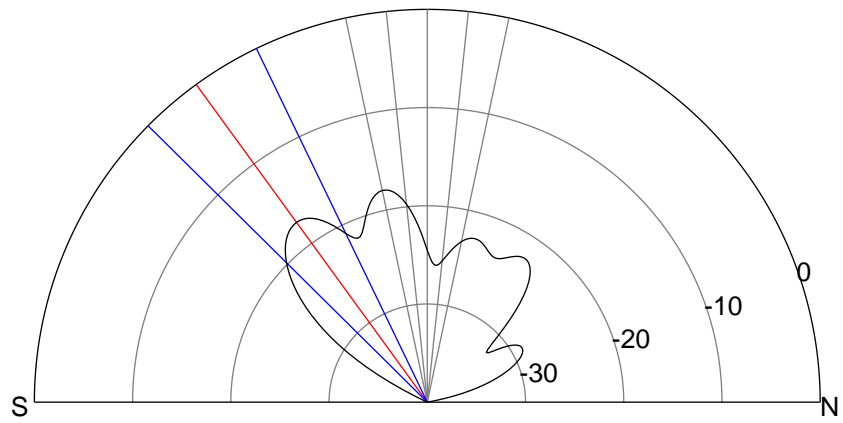
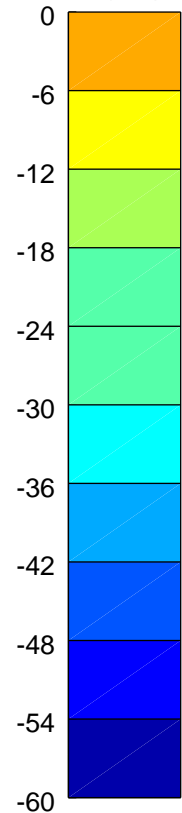
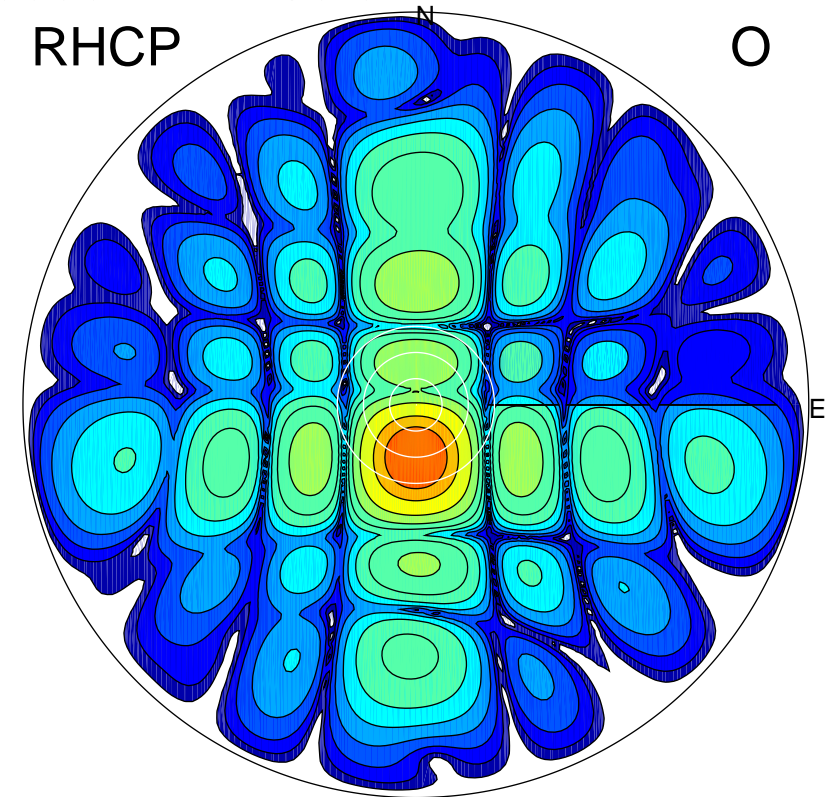
LHCP

X



RHCP

O



ERP 2.2 MW

Peak gain 4.6 dBi at Az 180 Zen 36
RHCP gain 5.1 dBi
N-S peak 4.6 dBi at Zen -36.0
N-S -3 dB beamwidth 19.5 deg.

ERP 122.0 MW

Peak gain 21.9 dBi at Az 181 Zen 12
LHCP gain 4.0 dBi
N-S peak 21.9 dBi at Zen -12.0
N-S -3 dB beamwidth 14.2 deg.