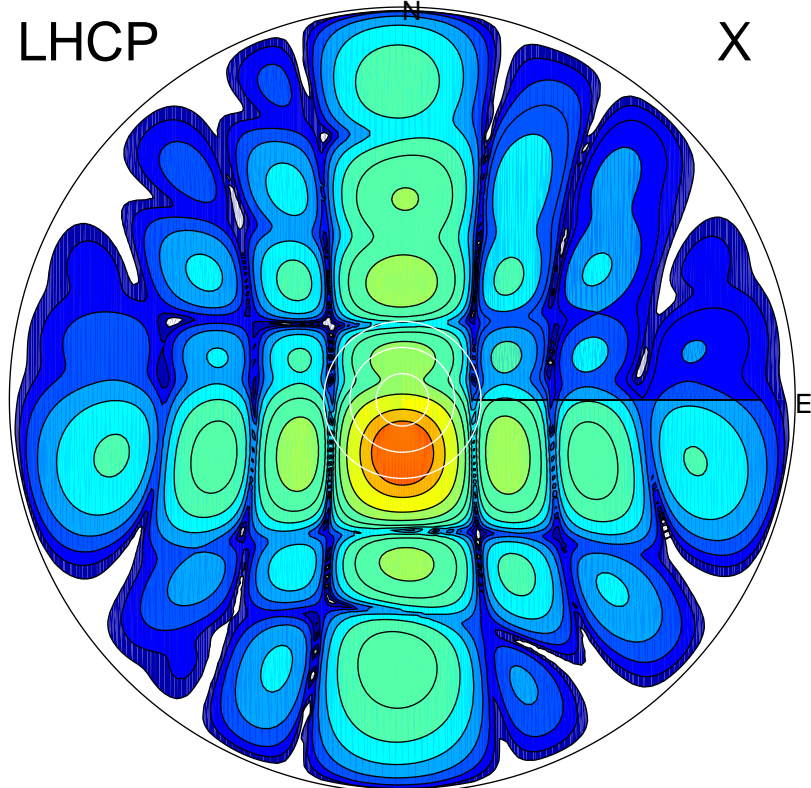


2017-03-08 12:41:10 A2 3.97000000 MHz 760.0 kW

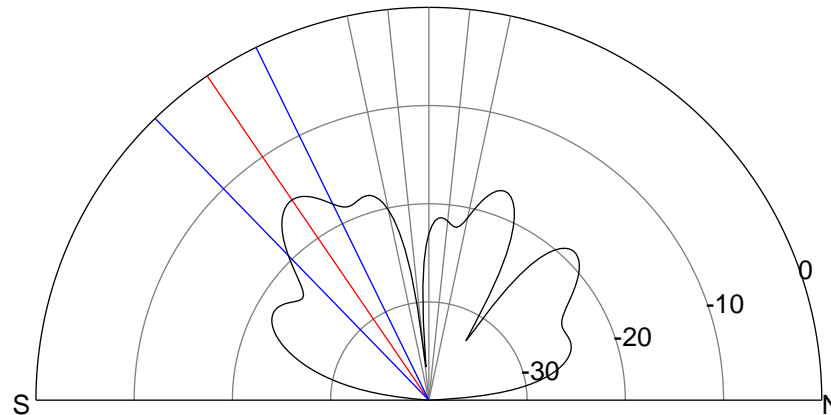
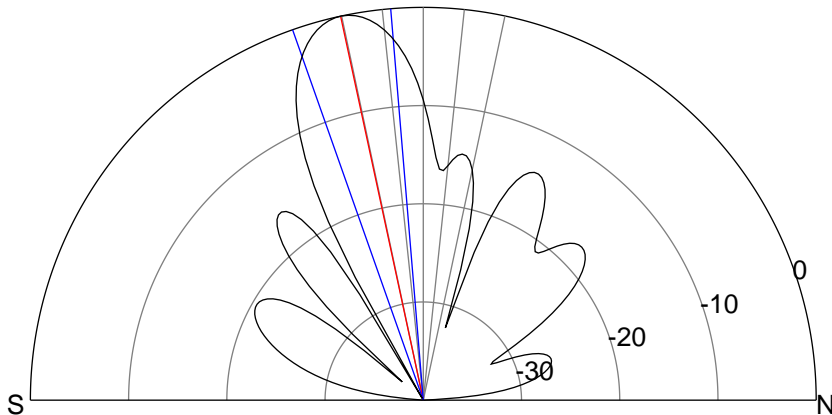
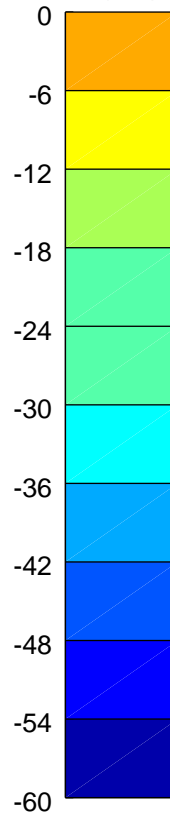
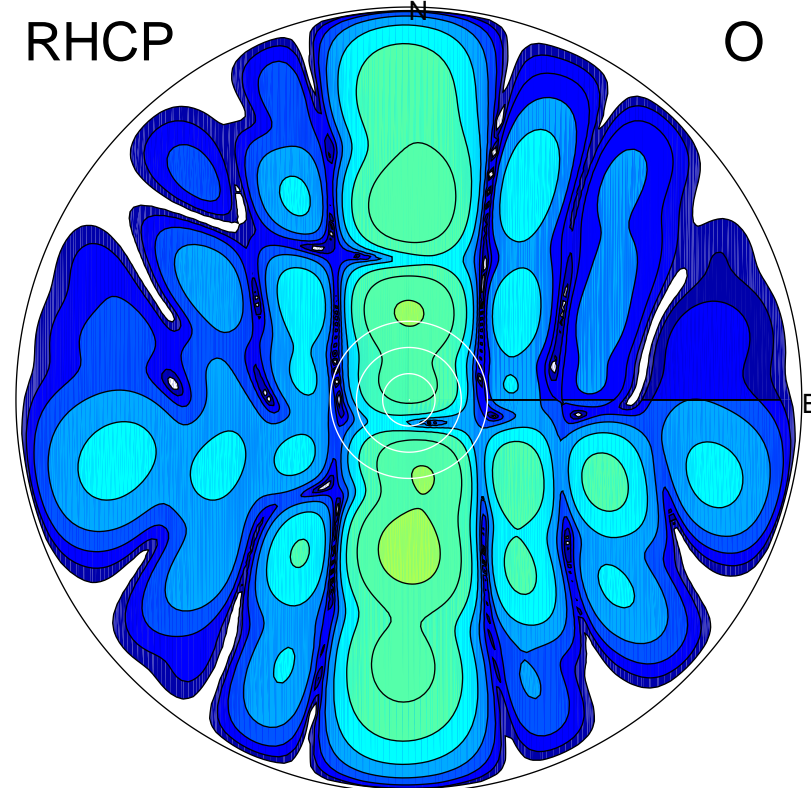
LHCP

X



RHCP

O



ERP 112.9 MW

Peak gain 21.7 dBi at Az 180 Zen 12
RHCP gain 1.5 dBi
N-S peak 21.7 dBi at Zen -12.2
N-S -3 dB beamwidth 14.7 deg.

ERP 3.3 MW

Peak gain 6.4 dBi at Az 180 Zen 34
LHCP gain 3.9 dBi
N-S peak 6.4 dBi at Zen -34.4
N-S -3 dB beamwidth 18.1 deg.