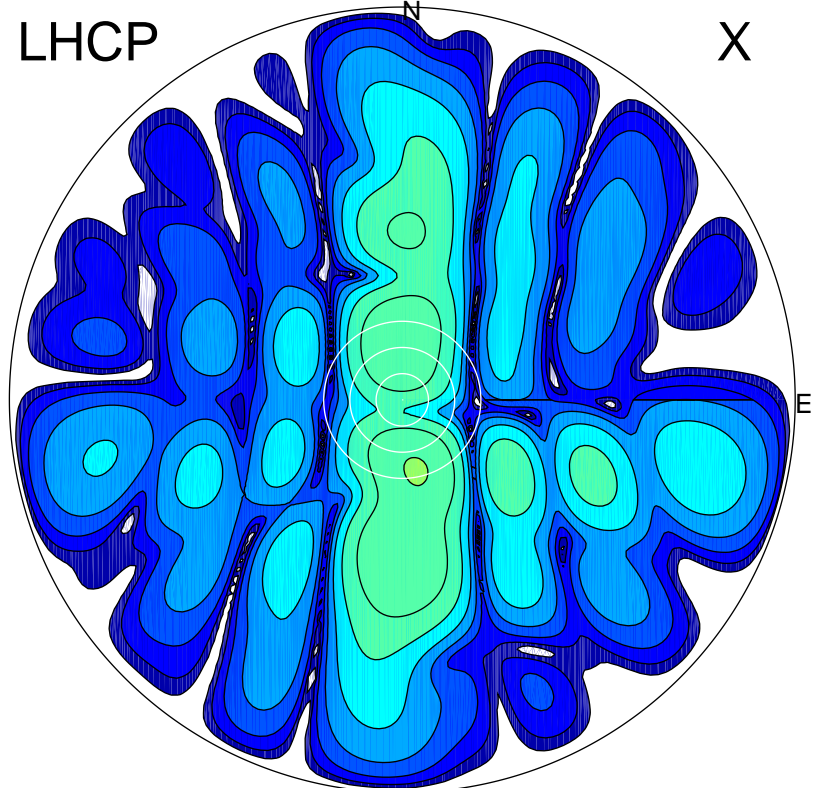
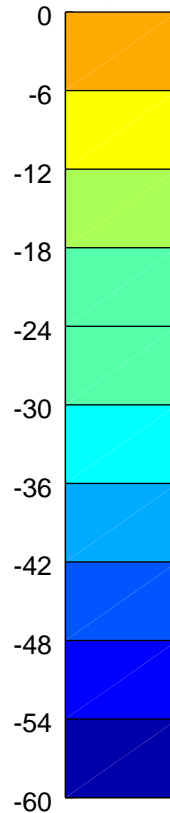


2017-03-08 11:46:00 A2 3.97000000 MHz 784.0 kW

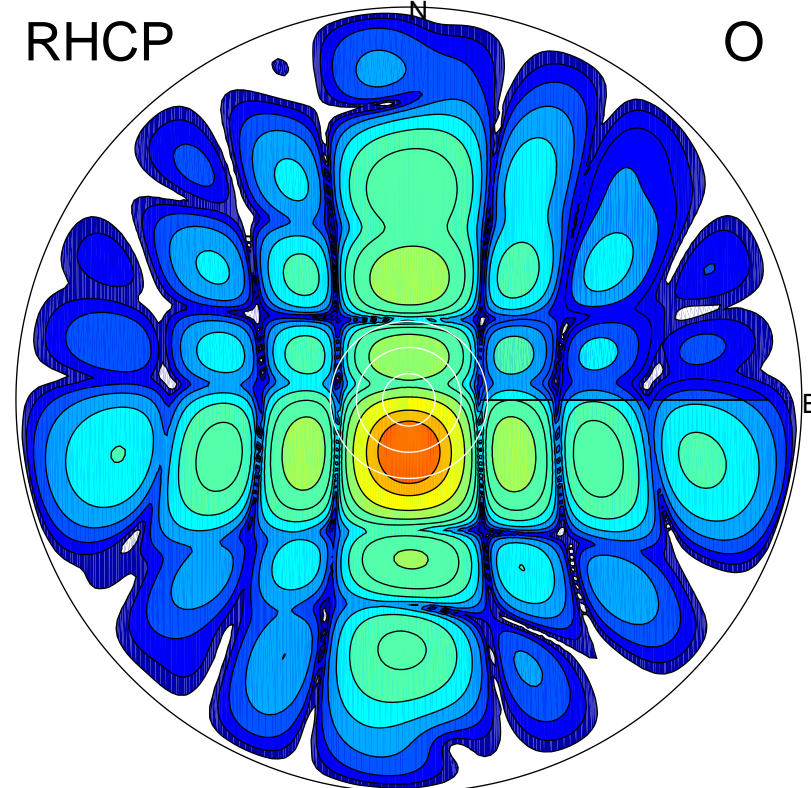
LHCP



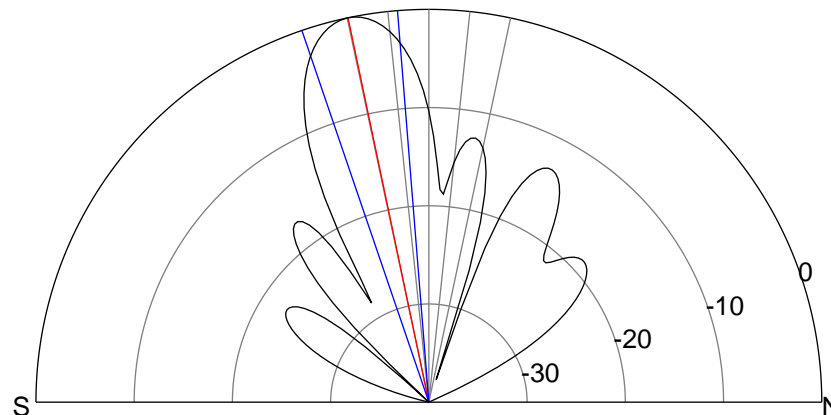
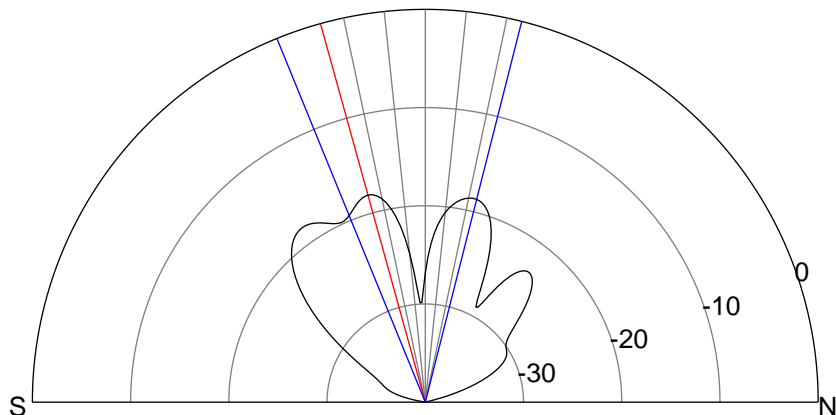
X



RHCP



O



ERP 2.2 MW

Peak gain 4.4 dBi at Az 168 Zen 17
RHCP gain 20.0 dBi
N-S peak 3.8 dBi at Zen -15.5
N-S -3 dB beamwidth 36.4 deg.

ERP 123.0 MW

Peak gain 22.0 dBi at Az 180 Zen 12
LHCP gain 3.1 dBi
N-S peak 22.0 dBi at Zen -11.9
N-S -3 dB beamwidth 14.3 deg.