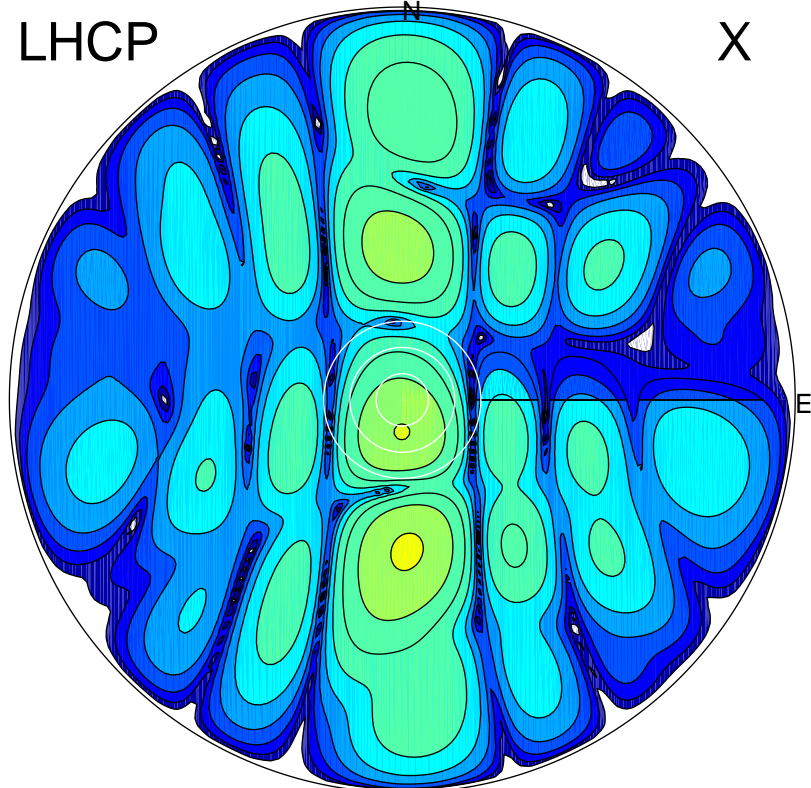


2017-03-08 11:42:05 A2 3.97000000 MHz 783.0 kW

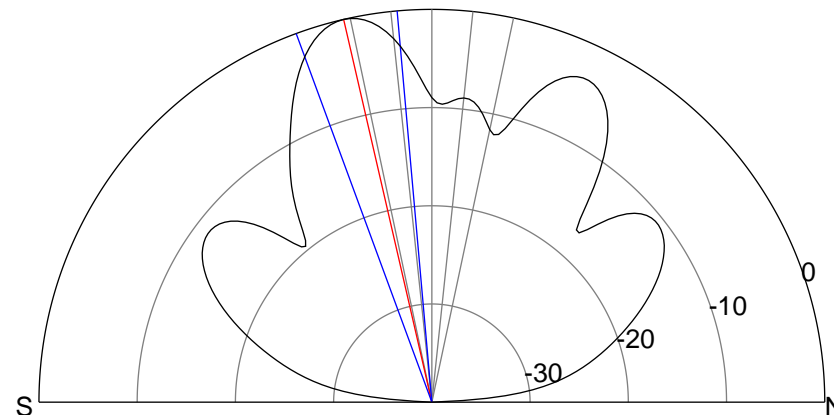
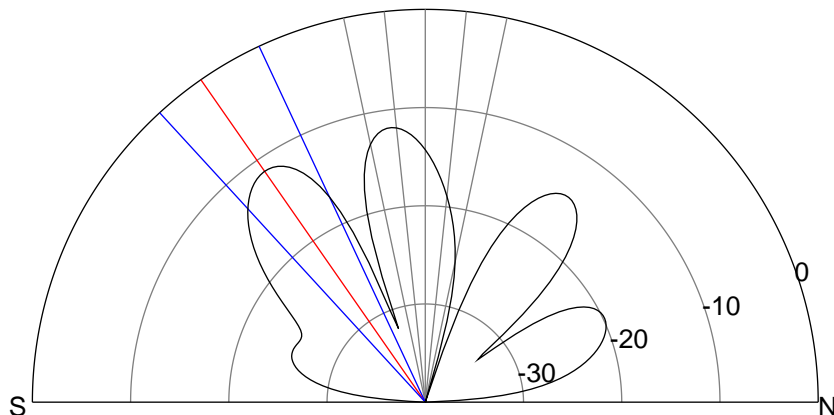
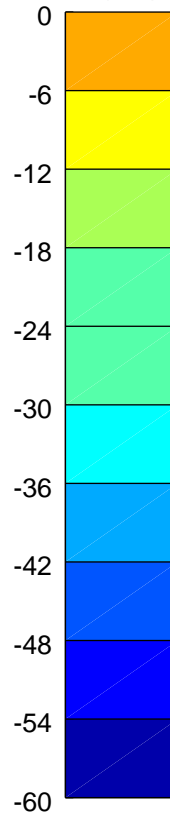
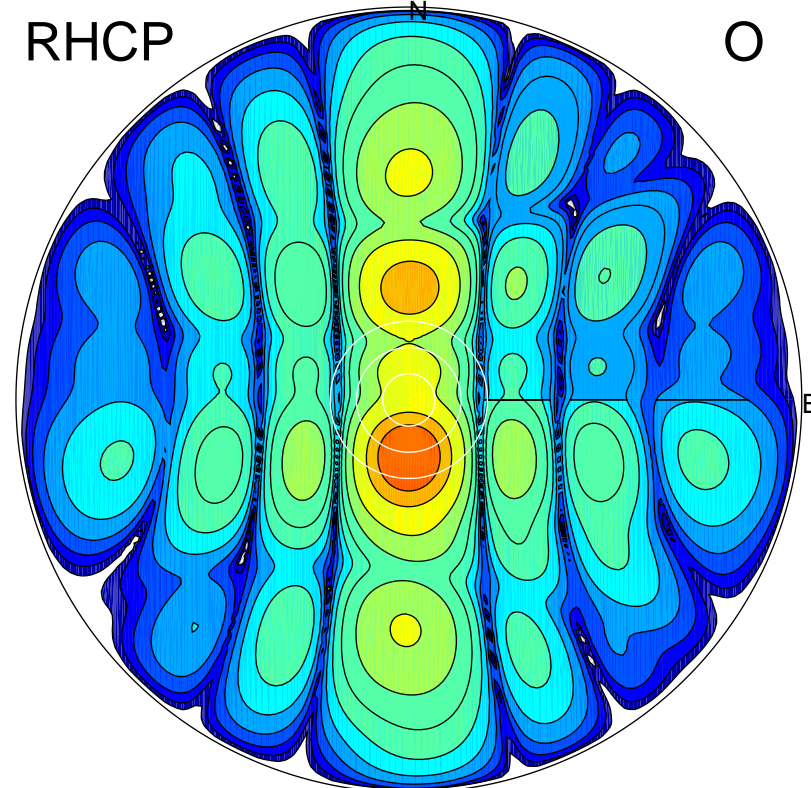
LHCP

X



RHCP

O



### ERP 5.1 MW

Peak gain 8.2 dBi at Az 178 Zen 34  
RHCP gain 4.8 dBi  
N-S peak 8.1 dBi at Zen -34.8  
N-S -3 dB beamwidth 17.5 deg.

### ERP 69.6 MW

Peak gain 19.5 dBi at Az 179 Zen 13  
LHCP gain 5.6 dBi  
N-S peak 19.5 dBi at Zen -13.0  
N-S -3 dB beamwidth 15.1 deg.