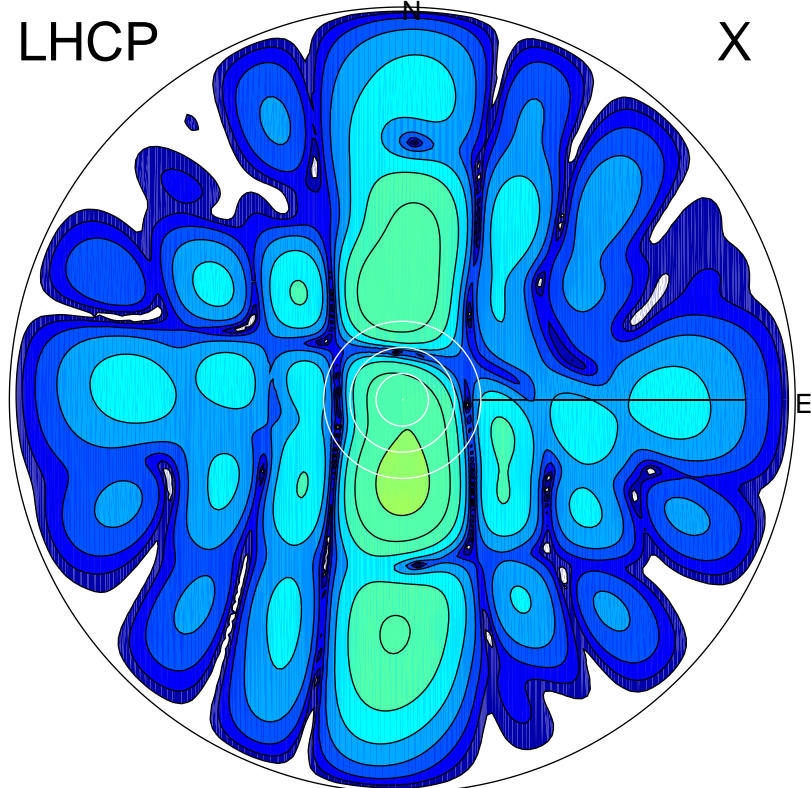


2017-03-06 12:57:00 A2 4.13000000 MHz 782.0 kW

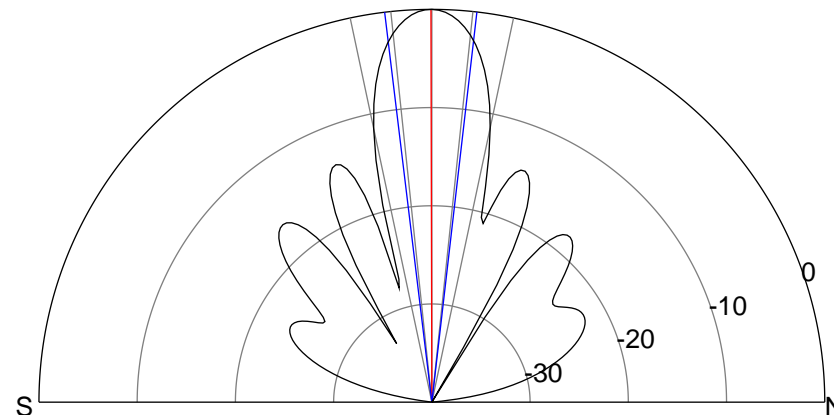
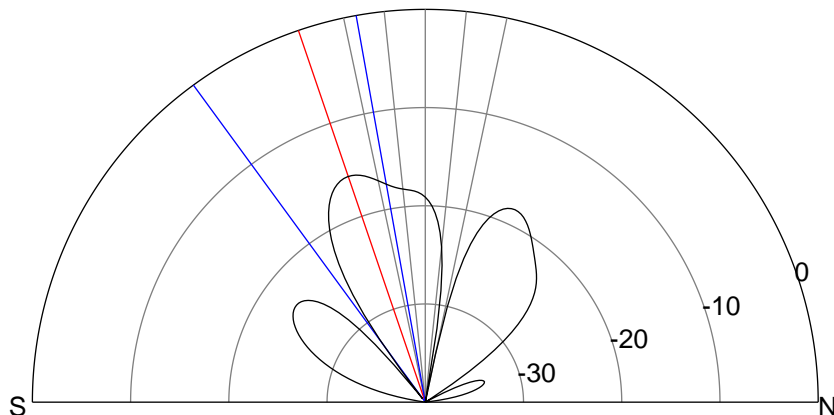
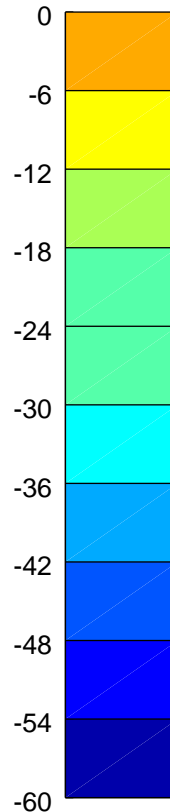
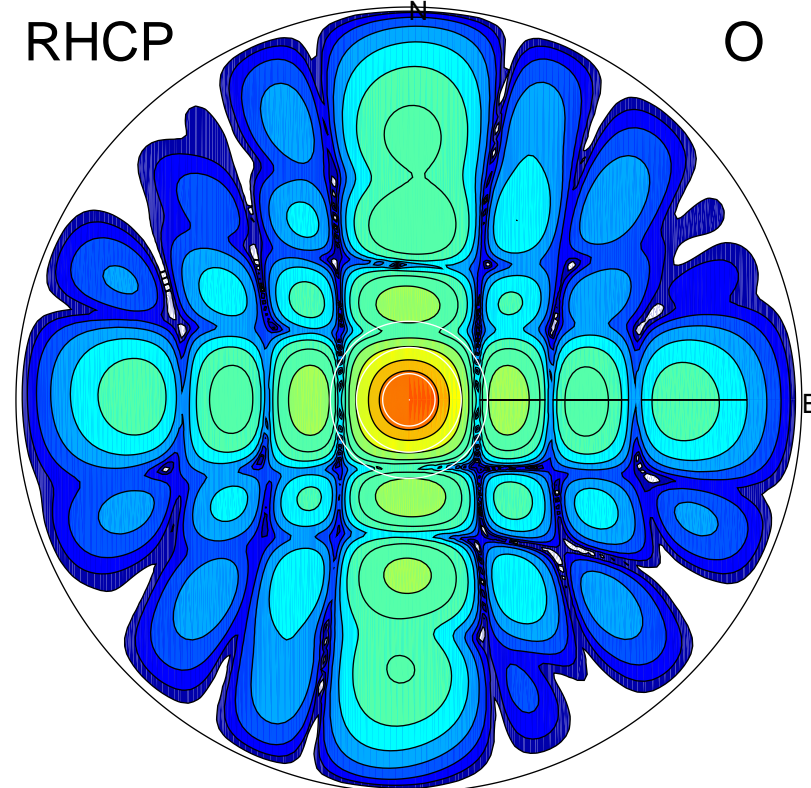
LHCP

X



RHCP

O



**ERP 3.6 MW**

Peak gain 6.6 dBi at Az 180 Zen 19

RHCP gain 6.4 dBi

N-S peak 6.6 dBi at Zen -18.8

N-S -3 dB beamwidth 26.0 deg.

**ERP 134.1 MW**

Peak gain 22.3 dBi at Az 13 Zen 0

LHCP gain 3.2 dBi

N-S peak 22.3 dBi at Zen -0.1

N-S -3 dB beamwidth 13.5 deg.