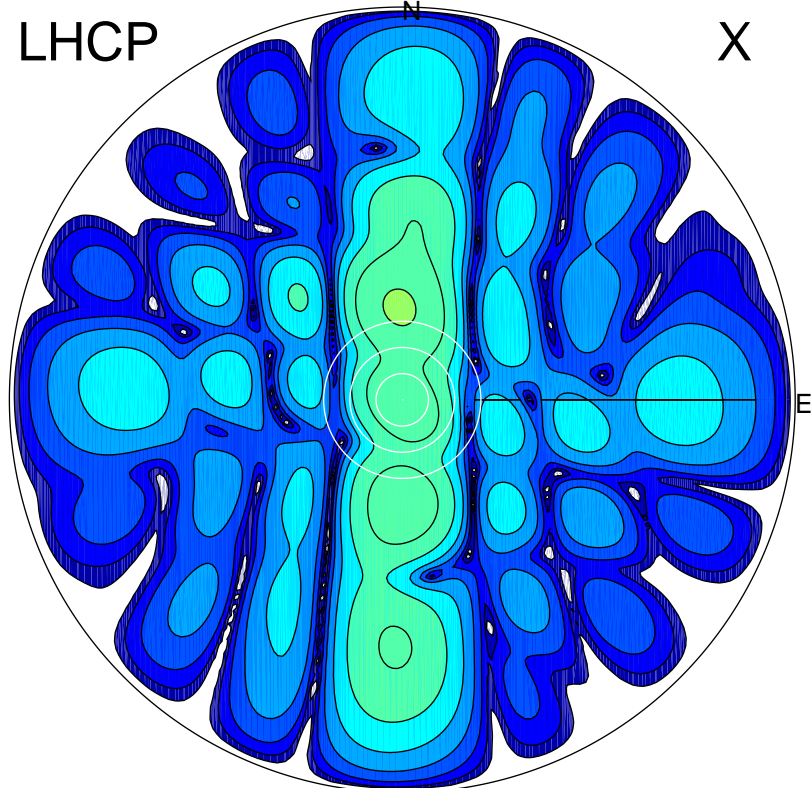


2017-03-06 12:53:00 A2 4.09000000 MHz 769.0 kW

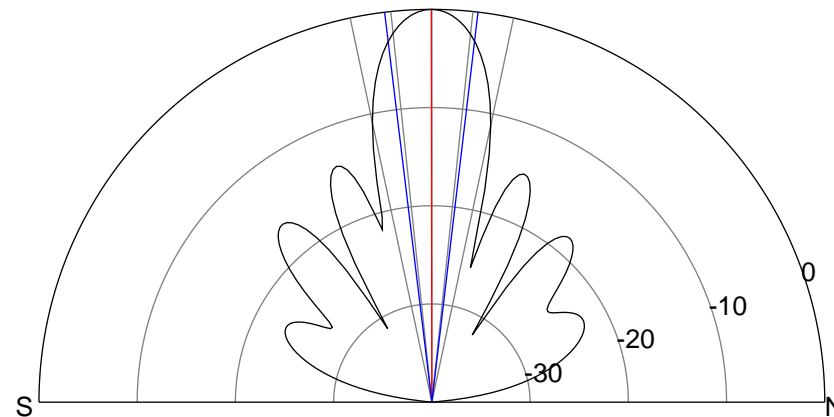
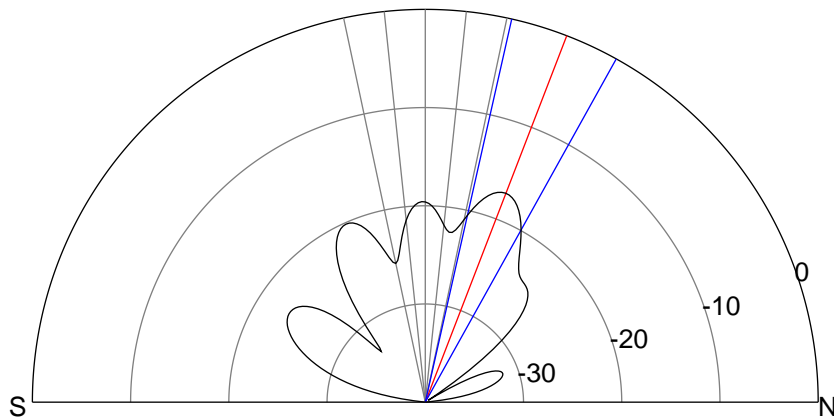
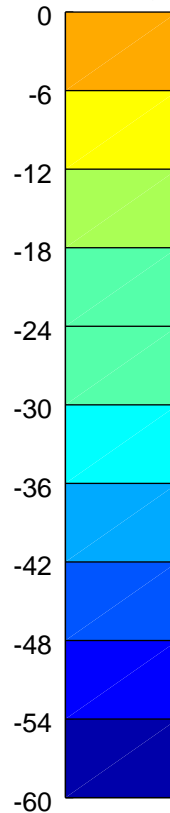
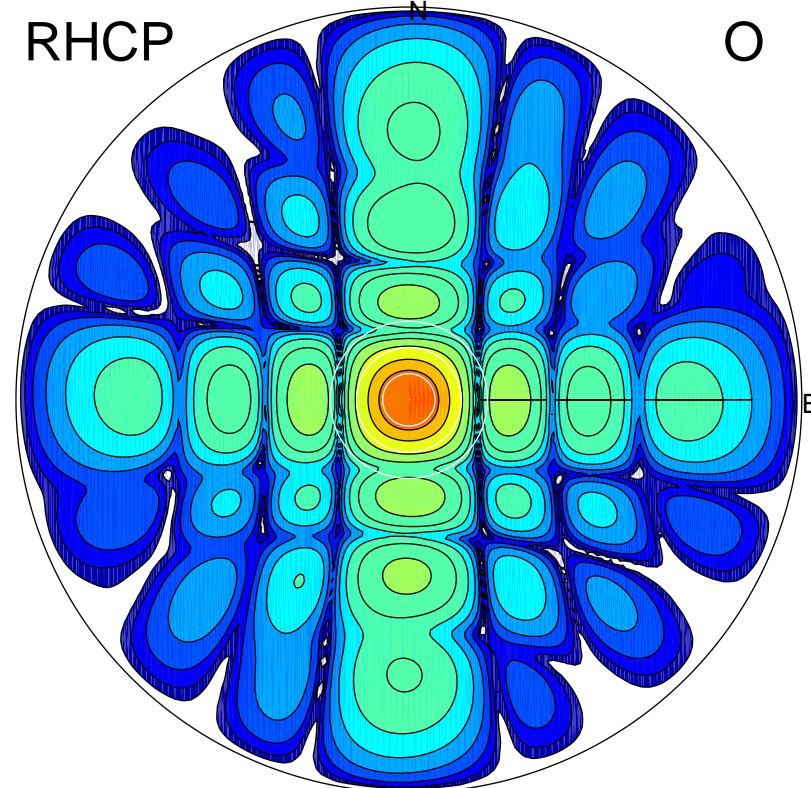
LHCP

X



RHCP

O



ERP 2.5 MW

Peak gain 5.1 dBi at Az 359 Zen 21
RHCP gain 7.1 dBi
N-S peak 5.1 dBi at Zen 21.1
N-S -3 dB beamwidth 16.4 deg.

ERP 131.6 MW

Peak gain 22.3 dBi at Az 87 Zen 0
LHCP gain 2.7 dBi
N-S peak 22.3 dBi at Zen -0.1
N-S -3 dB beamwidth 13.7 deg.