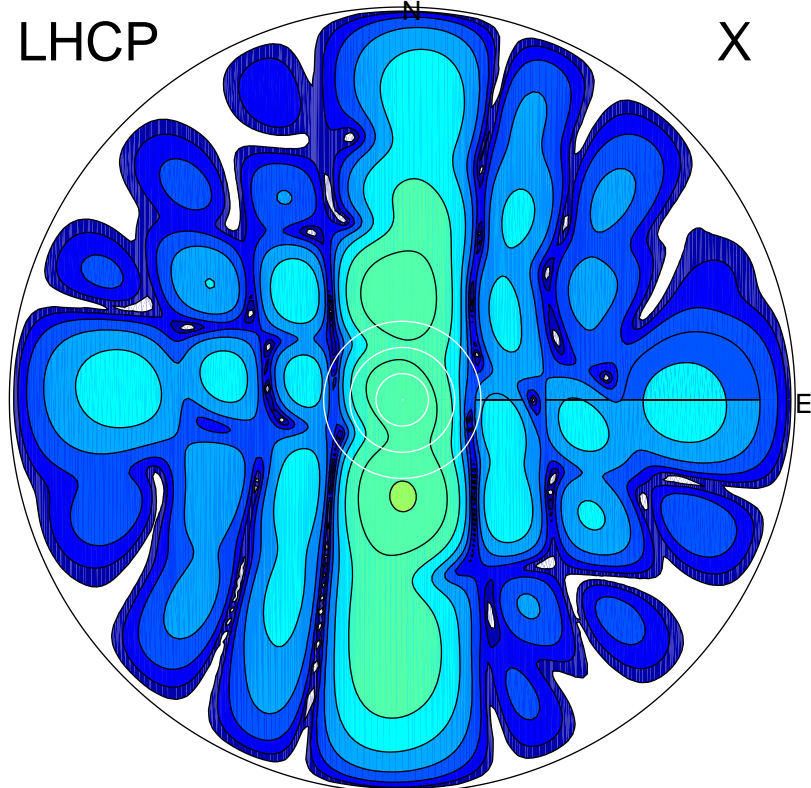


2017-03-06 12:49:00 A2 4.05000000 MHz 763.0 kW

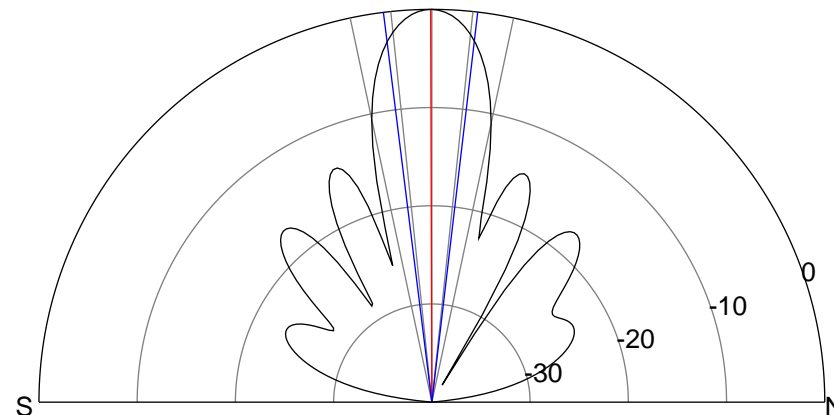
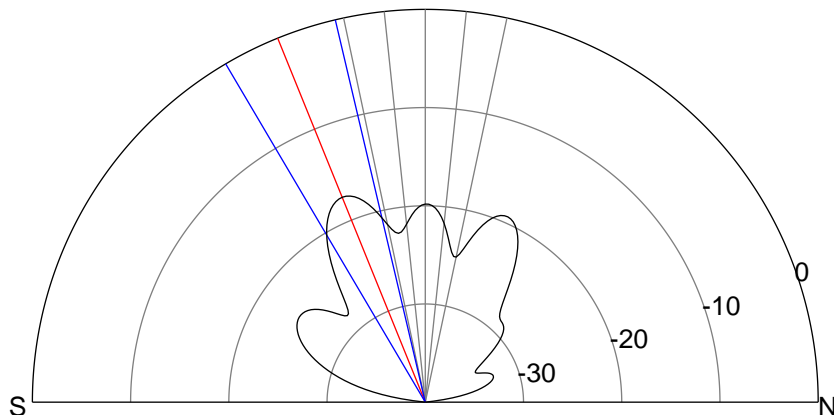
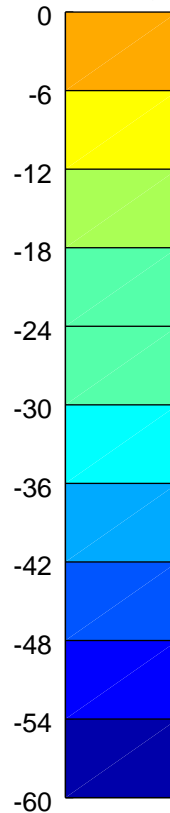
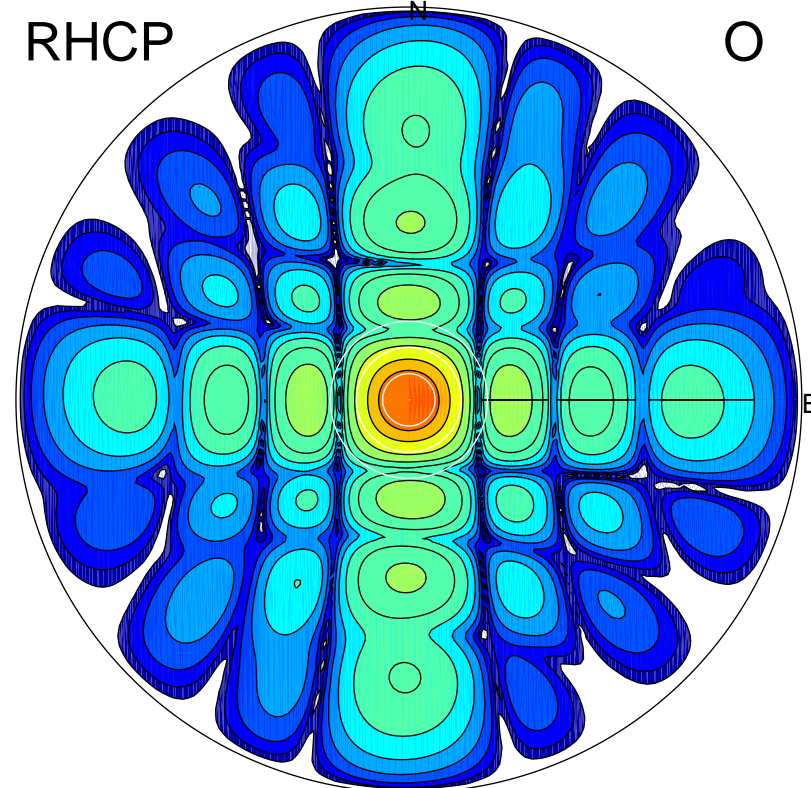
LHCP

X



RHCP

O



ERP 2.3 MW

Peak gain 4.8 dBi at Az 180 Zen 22
RHCP gain 8.0 dBi
N-S peak 4.8 dBi at Zen -22.1
N-S -3 dB beamwidth 17.3 deg.

ERP 128.6 MW

Peak gain 22.3 dBi at Az 90 Zen 0
LHCP gain 2.4 dBi
N-S peak 22.3 dBi at Zen -0.2
N-S -3 dB beamwidth 13.8 deg.