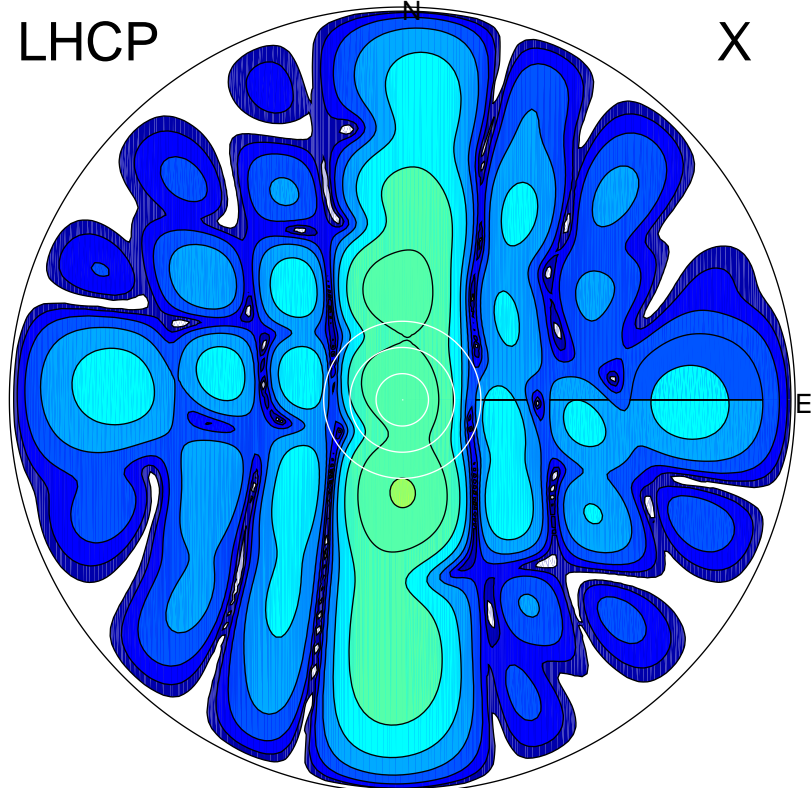


2017-03-06 12:45:00 A2 4.01000000 MHz 778.0 kW

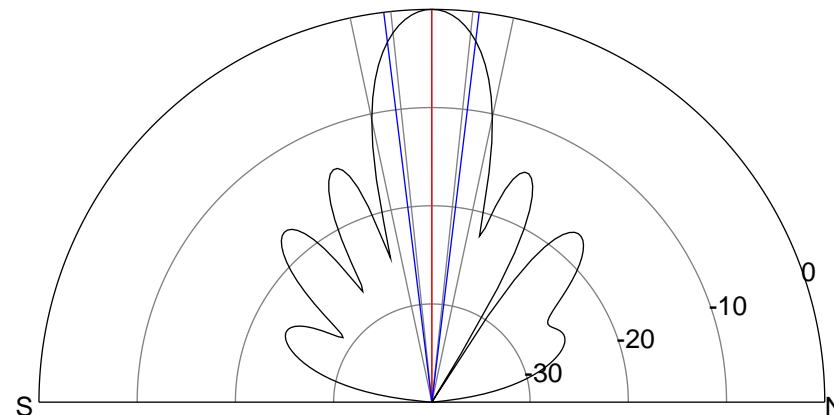
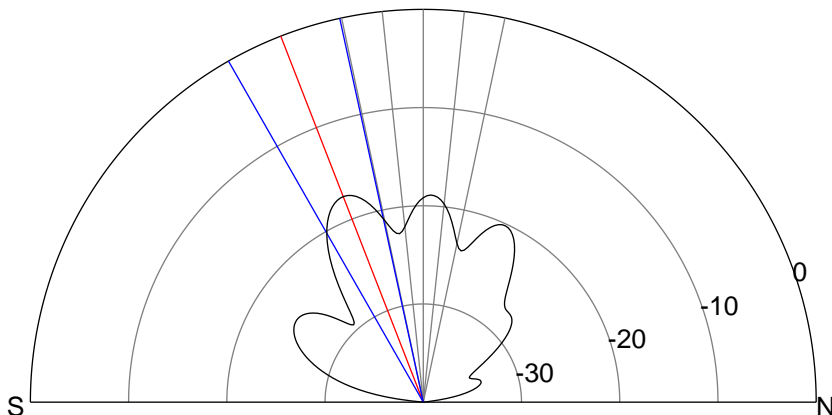
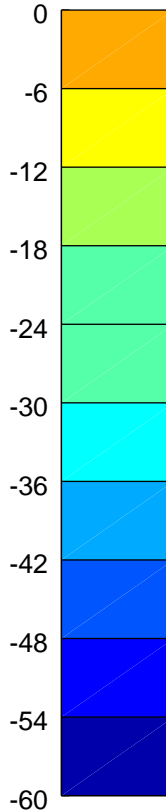
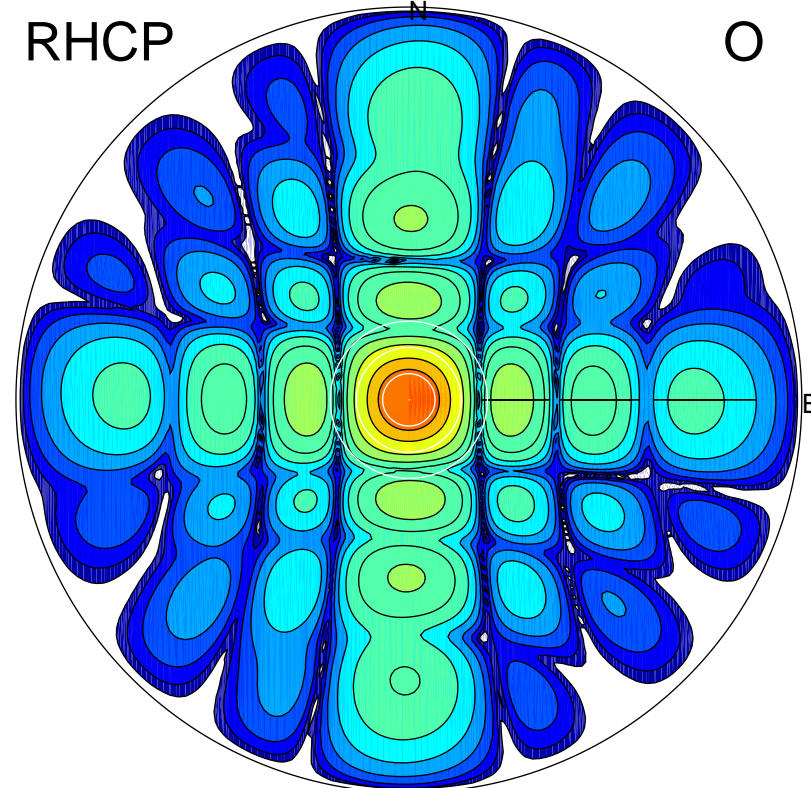
LHCP

X



RHCP

O



ERP 2.3 MW

Peak gain 4.6 dBi at Az 180 Zen 21
RHCP gain 7.5 dBi
N-S peak 4.6 dBi at Zen -21.3
N-S -3 dB beamwidth 17.4 deg.

ERP 128.5 MW

Peak gain 22.2 dBi at Az 76 Zen 0
LHCP gain 3.0 dBi
N-S peak 22.2 dBi at Zen -0.0
N-S -3 dB beamwidth 14.0 deg.