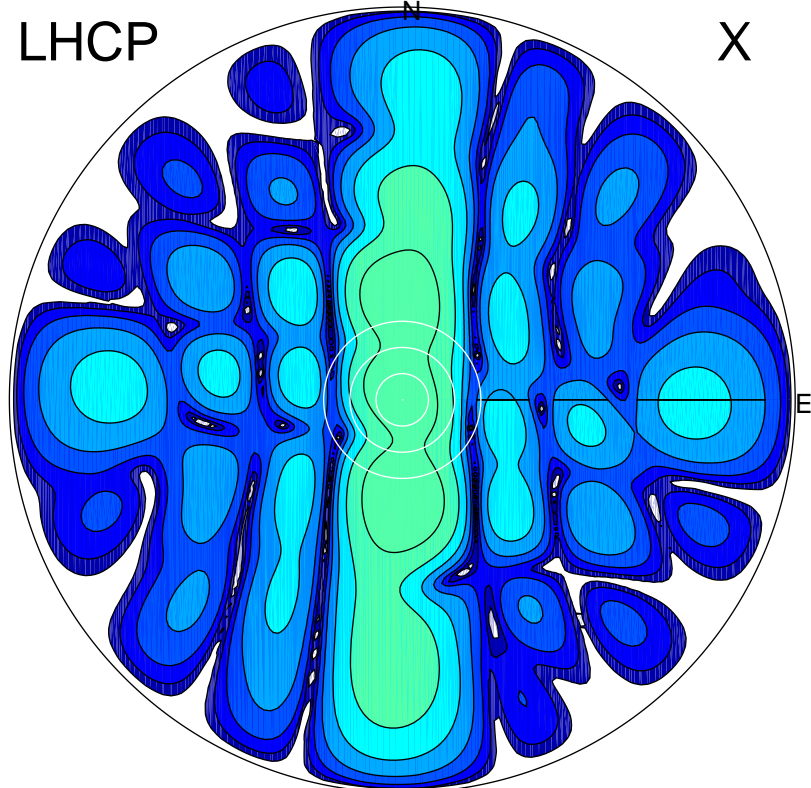


2017-03-06 12:41:00 A2 3.97000000 MHz 751.0 kW

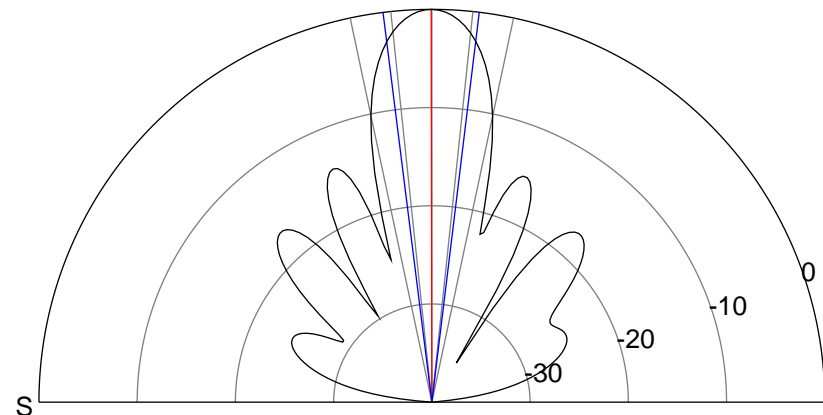
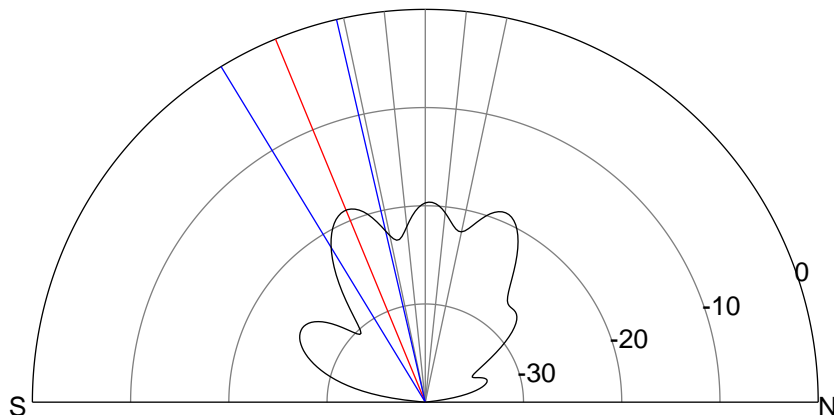
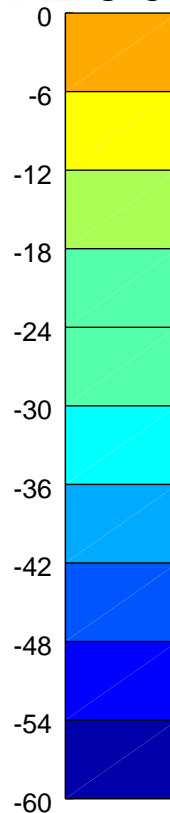
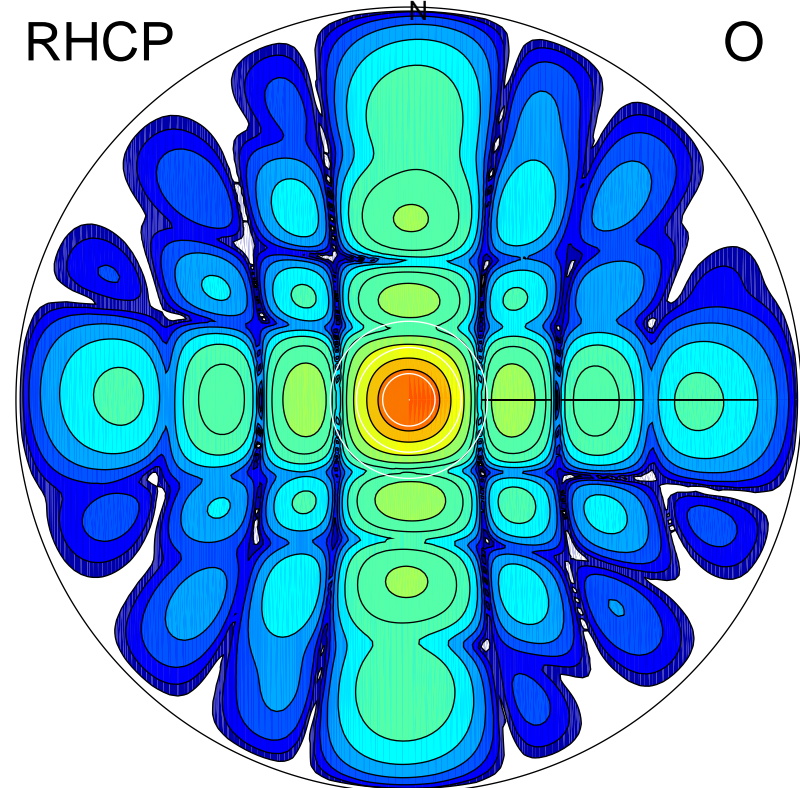
LHCP

X



RHCP

O



ERP 1.6 MW

Peak gain 3.3 dBi at Az 179 Zen 23
RHCP gain 7.9 dBi
N-S peak 3.3 dBi at Zen -22.4
N-S -3 dB beamwidth 18.3 deg.

ERP 122.4 MW

Peak gain 22.1 dBi at Az 6 Zen 0
LHCP gain 2.4 dBi
N-S peak 22.1 dBi at Zen -0.1
N-S -3 dB beamwidth 14.1 deg.