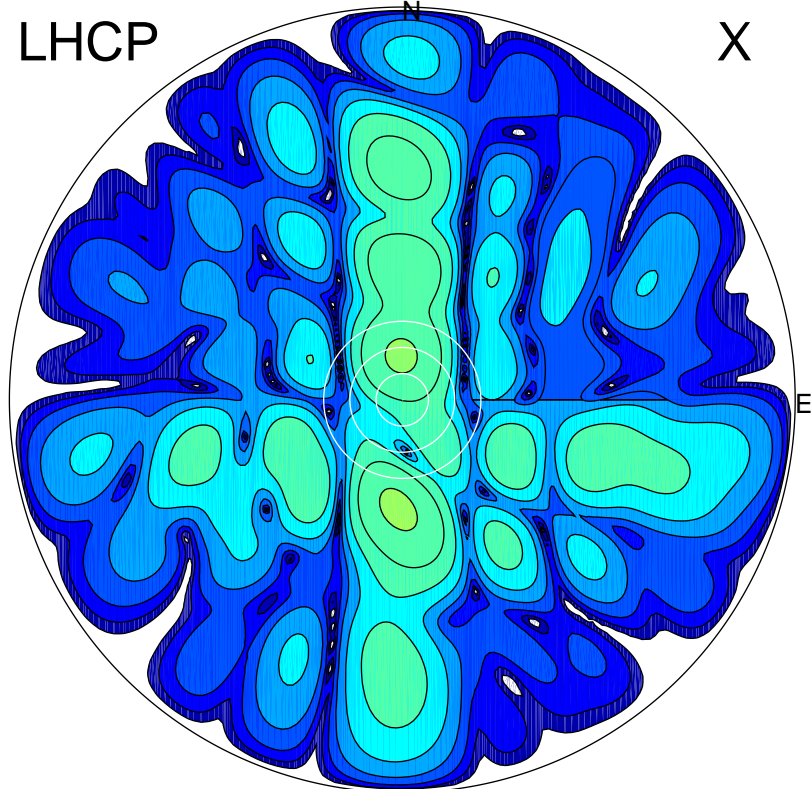


2017-03-06 10:19:32 A2 4.54400000 MHz 817.0 kW

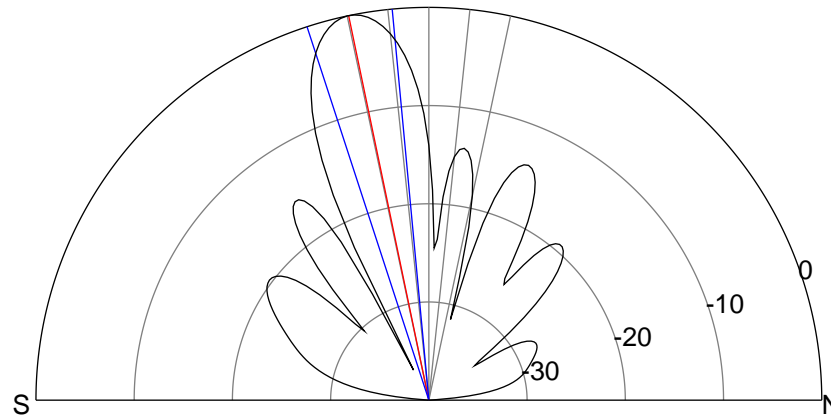
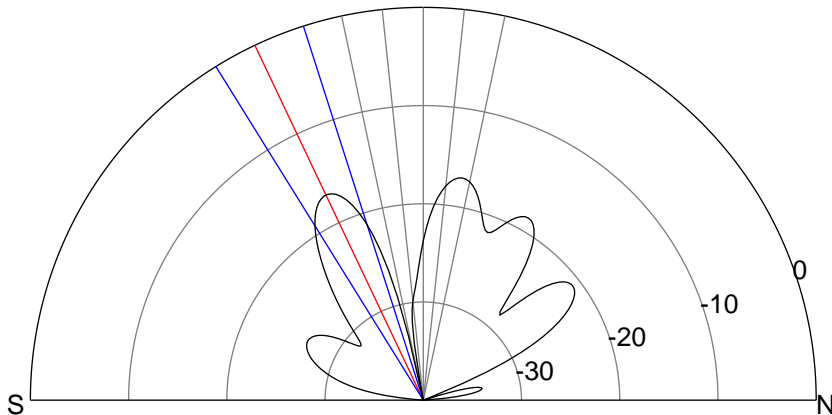
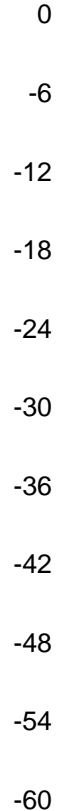
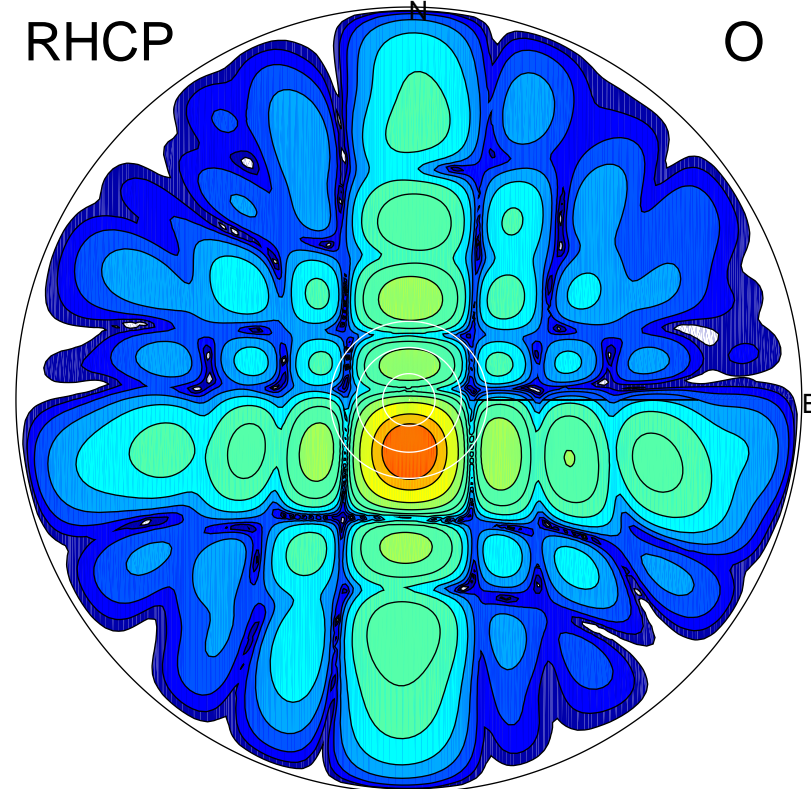
LHCP

X



RHCP

O



### ERP 3.3 MW

Peak gain 6.1 dBi at Az 182 Zen 25  
RHCP gain 5.8 dBi  
N-S peak 6.0 dBi at Zen -25.4  
N-S -3 dB beamwidth 14.1 deg.

### ERP 158.6 MW

Peak gain 22.9 dBi at Az 178 Zen 12  
LHCP gain -21.1 dBi  
N-S peak 22.9 dBi at Zen -11.8  
N-S -3 dB beamwidth 12.7 deg.