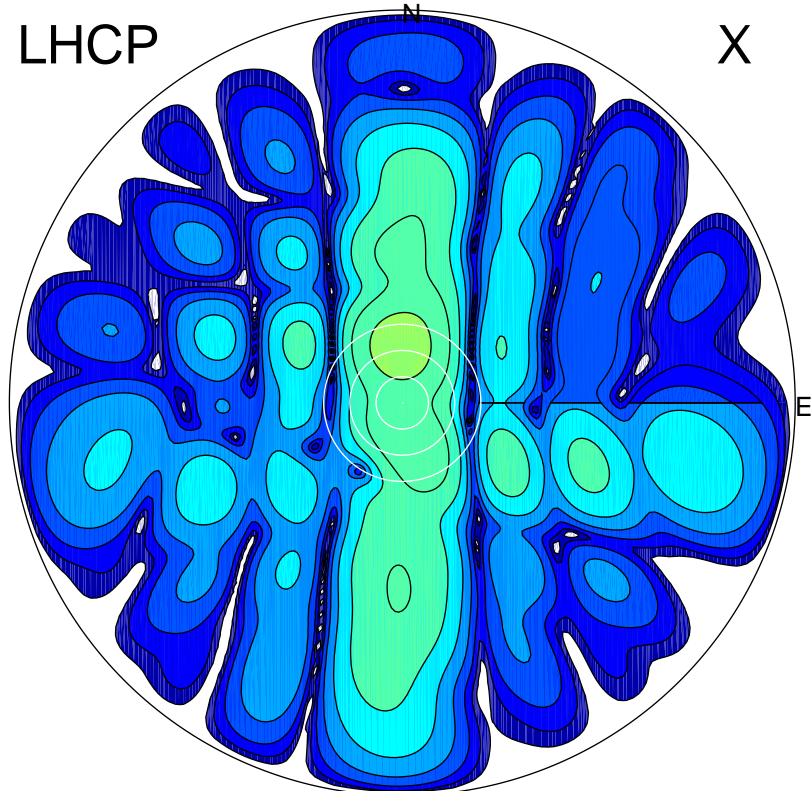


2017-03-06 09:33:32 A2 4.04000000 MHz 797.0 kW

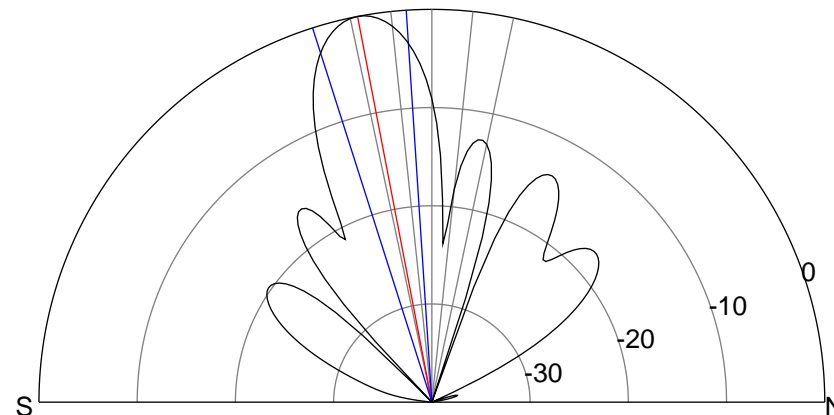
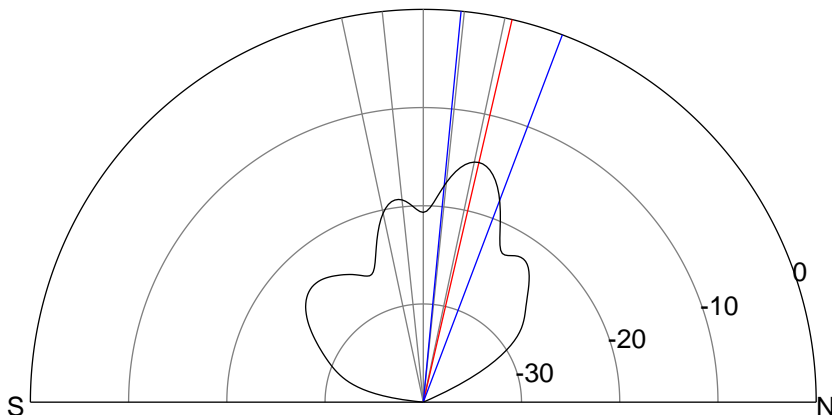
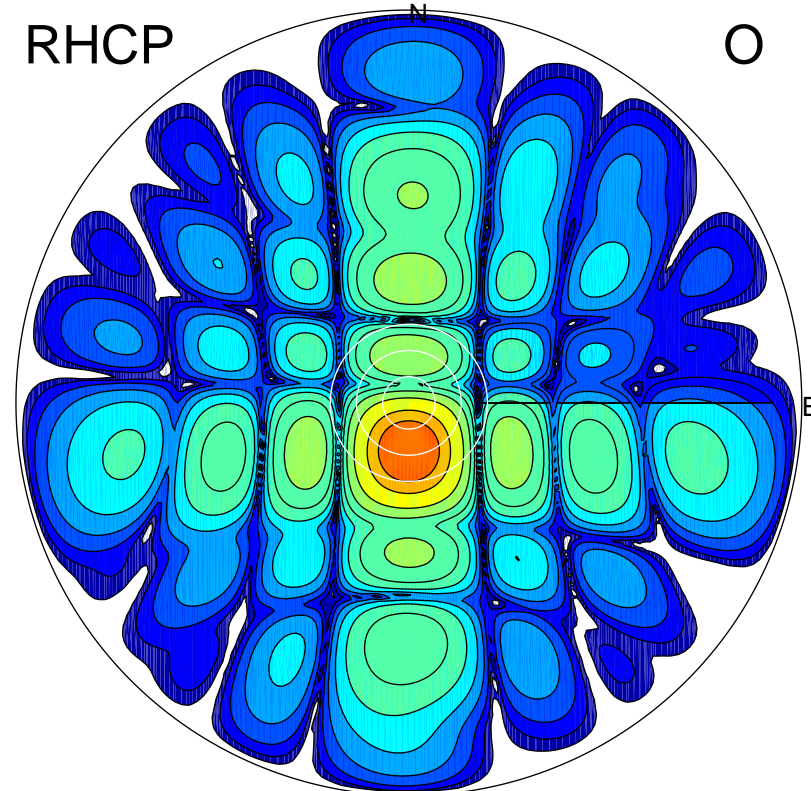
LHCP

X



RHCP

O



### ERP 4.1 MW

Peak gain 7.2 dBi at Az 358 Zen 13  
RHCP gain 8.2 dBi  
N-S peak 7.1 dBi at Zen 13.1  
N-S -3 dB beamwidth 15.2 deg.

### ERP 128.8 MW

Peak gain 22.1 dBi at Az 181 Zen 11  
LHCP gain 2.1 dBi  
N-S peak 22.1 dBi at Zen -10.9  
N-S -3 dB beamwidth 13.9 deg.