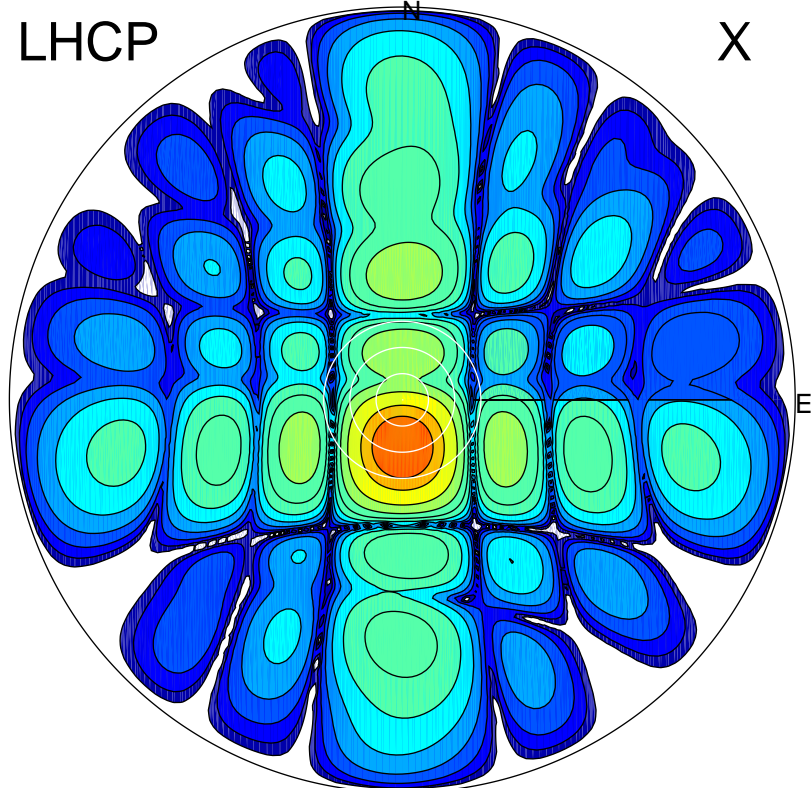


2017-03-04 17:34:27 A2 4.04000000 MHz 764.0 kW

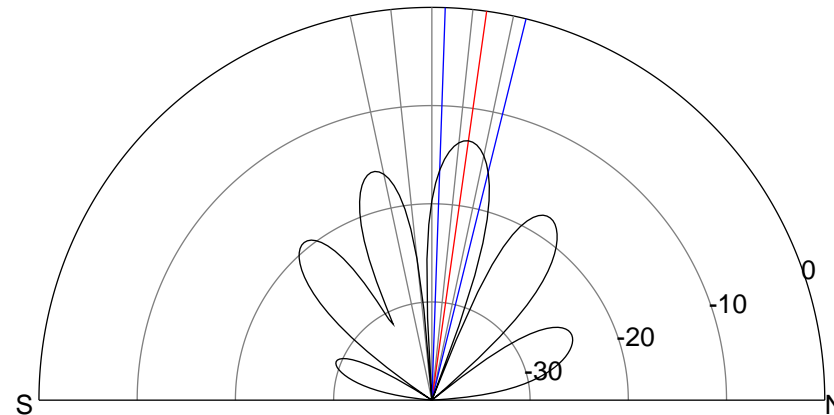
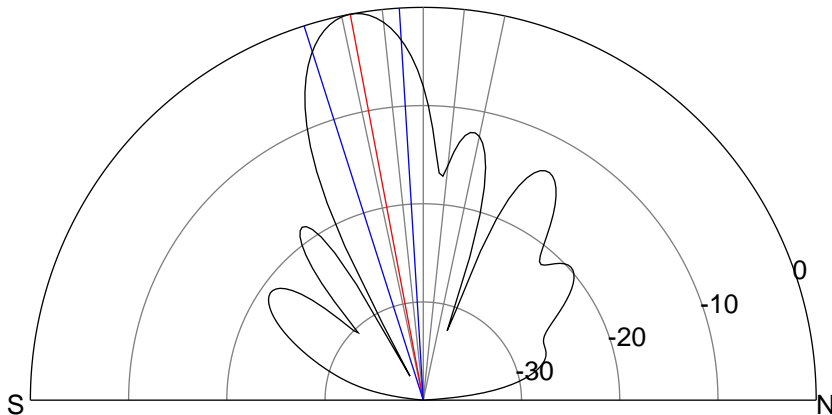
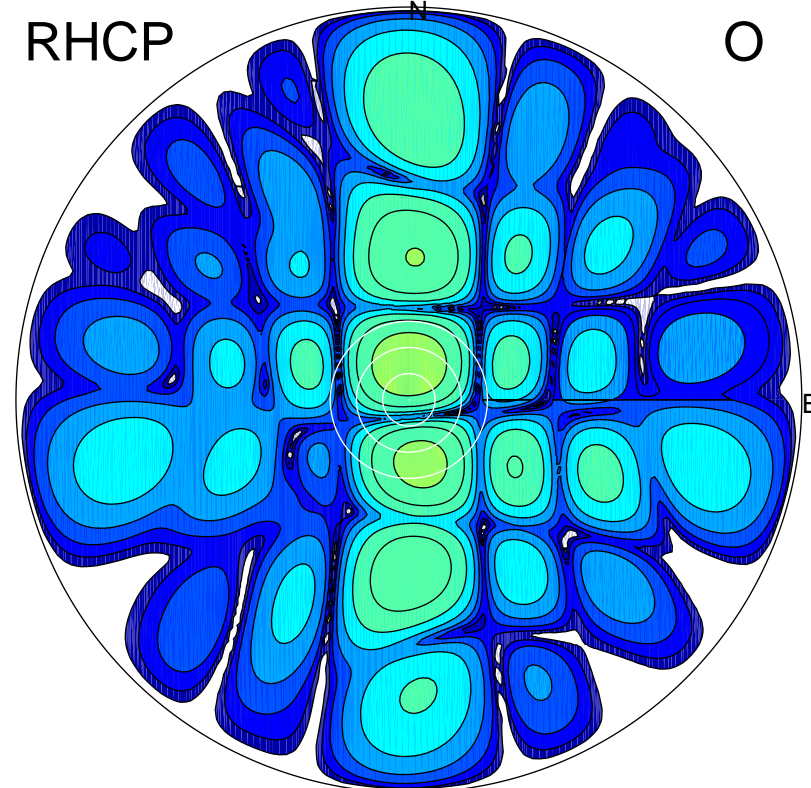
LHCP

X



RHCP

O



### ERP 118.7 MW

Peak gain 21.9 dBi at Az 180 Zen 11  
RHCP gain 4.9 dBi  
N-S peak 21.9 dBi at Zen -10.7  
N-S -3 dB beamwidth 14.2 deg.

### ERP 5.5 MW

Peak gain 8.6 dBi at Az 3 Zen 8  
LHCP gain 8.4 dBi  
N-S peak 8.6 dBi at Zen 8.0  
N-S -3 dB beamwidth 11.9 deg.