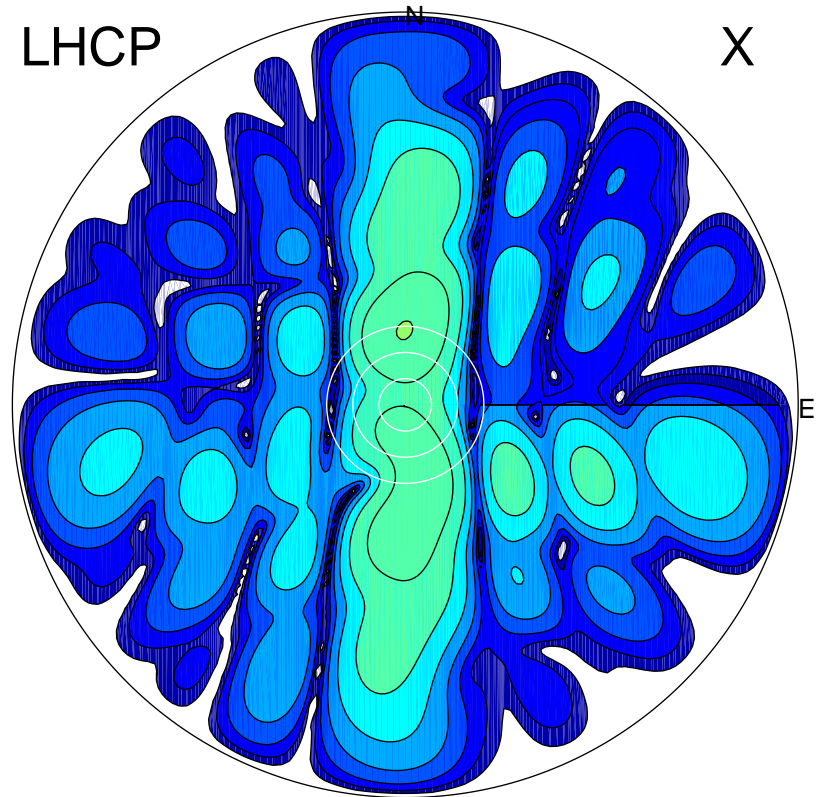


2017-03-04 14:32:27 A2 4.04000000 MHz 571.0 kW

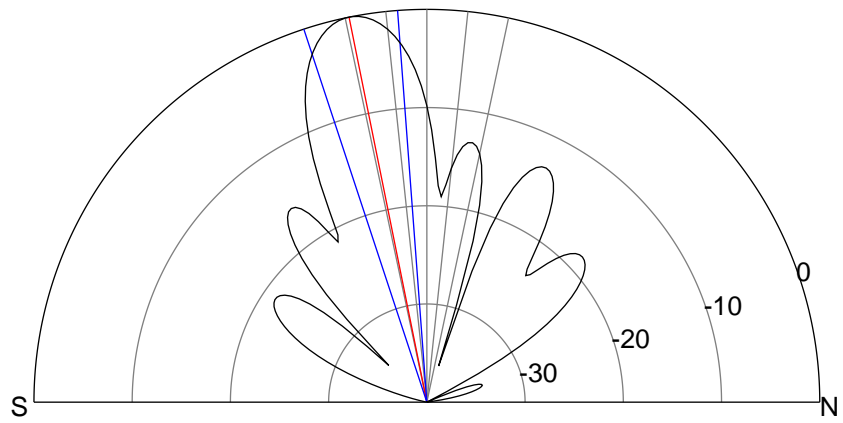
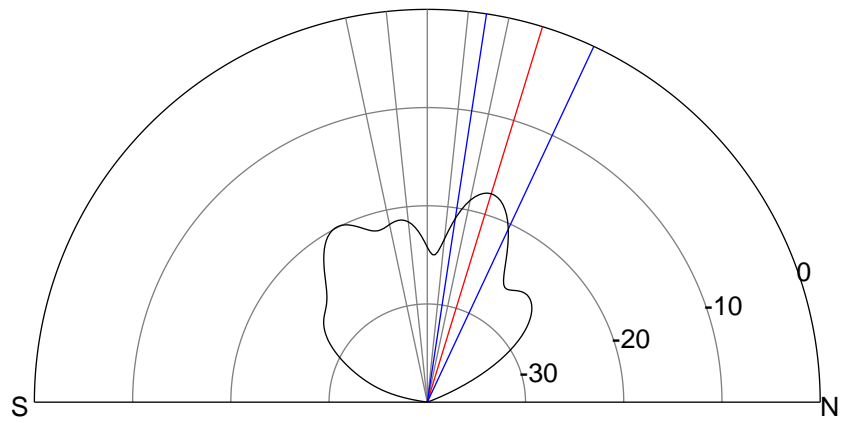
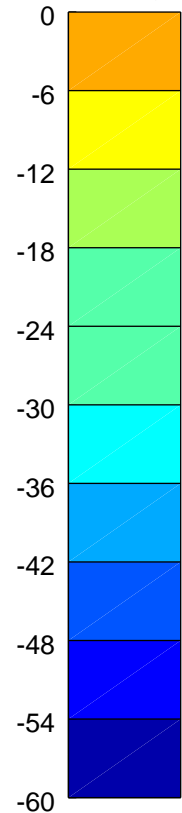
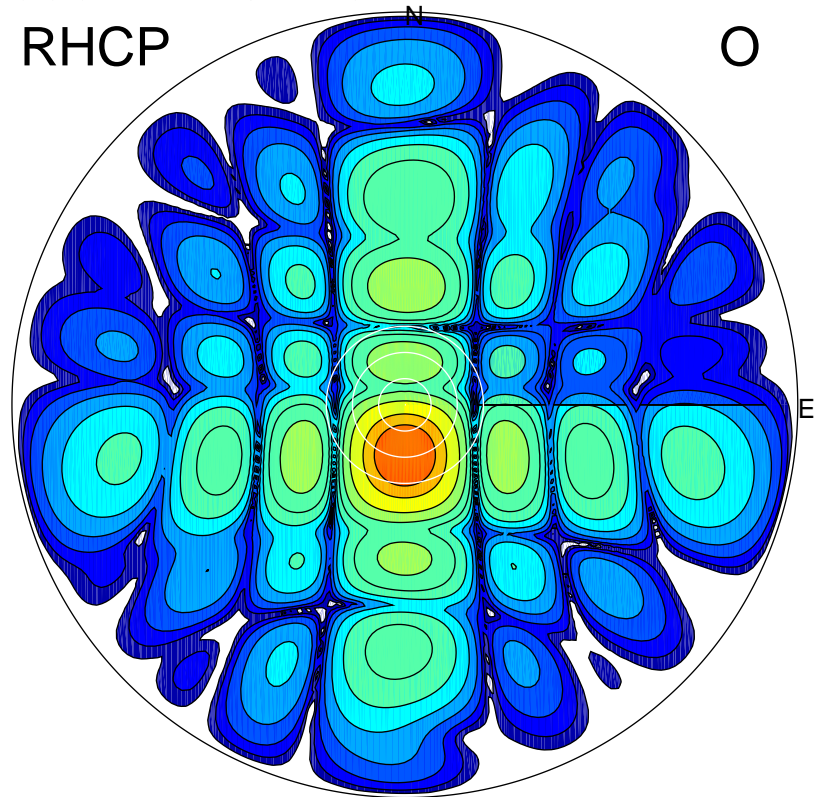
LHCP

X



RHCP

O



### ERP 1.5 MW

Peak gain 4.3 dBi at Az 0 Zen 17  
RHCP gain -7.6 dBi  
N-S peak 4.3 dBi at Zen 17.1  
N-S -3 dB beamwidth 16.4 deg.

### ERP 93.0 MW

Peak gain 22.1 dBi at Az 180 Zen 11  
LHCP gain 0.7 dBi  
N-S peak 22.1 dBi at Zen -11.4  
N-S -3 dB beamwidth 14.0 deg.